

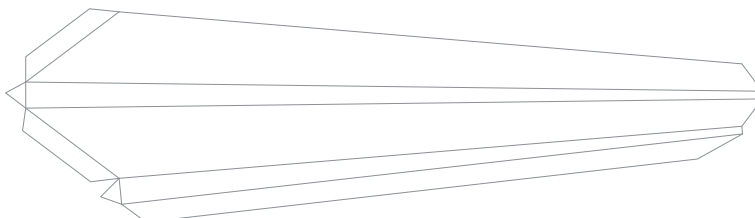
Blank space for 787-9 and 10 variants

Instructions

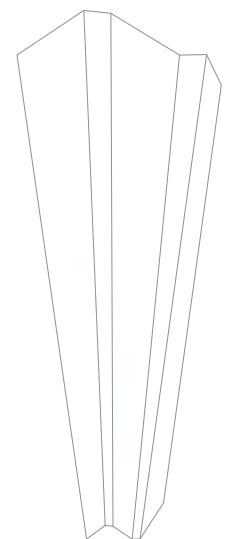


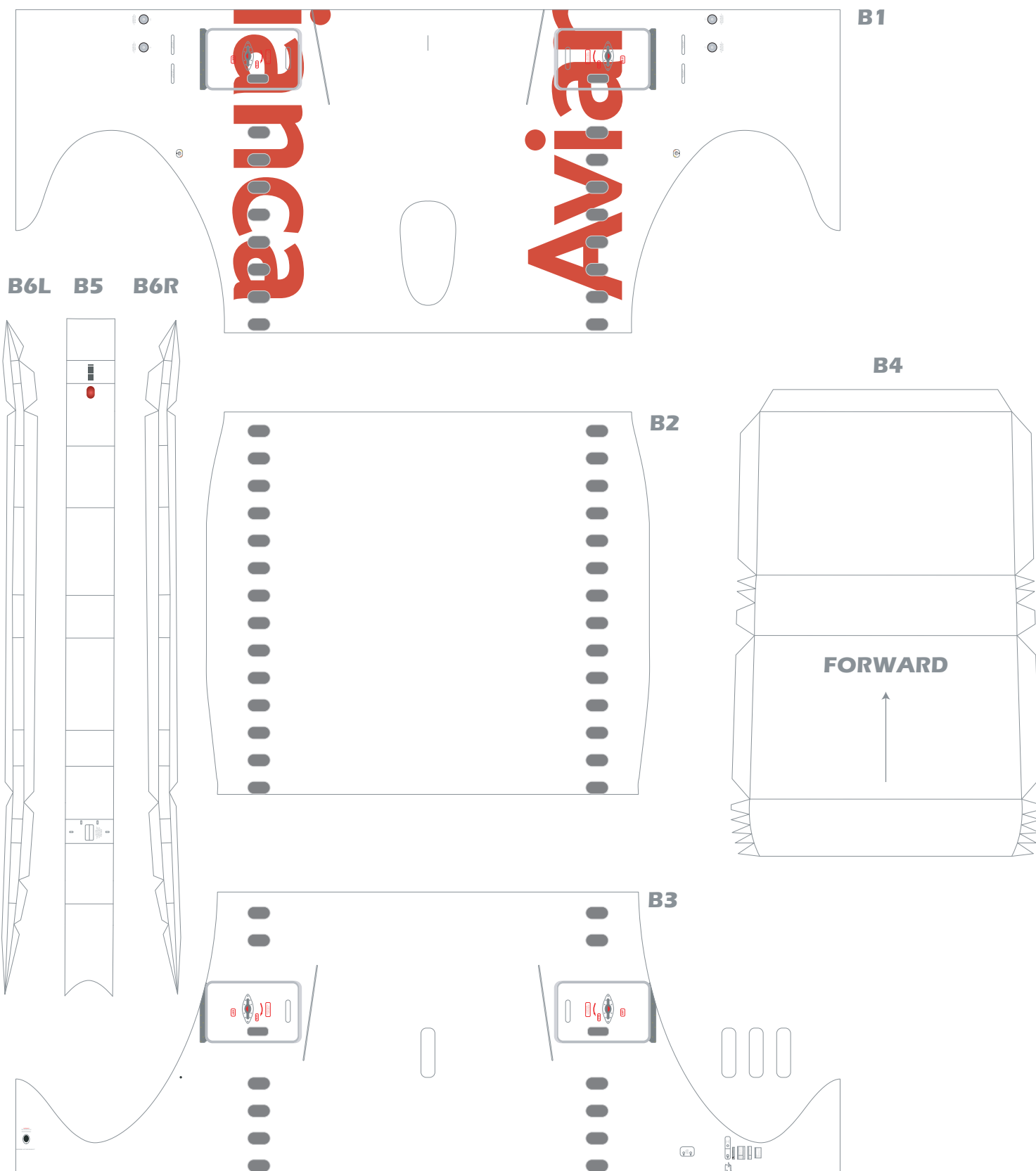
Scan

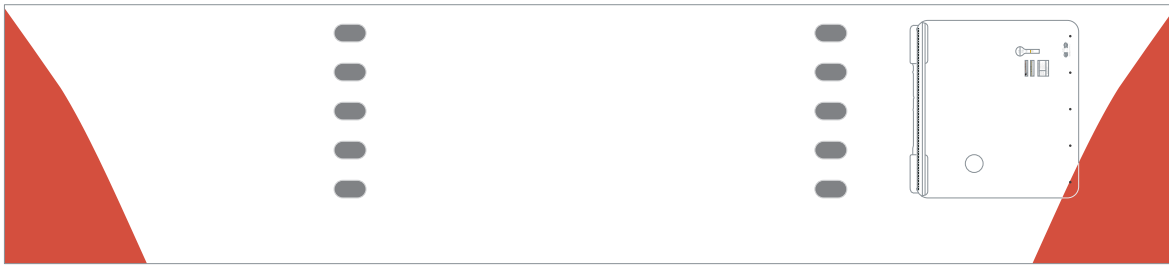
A14



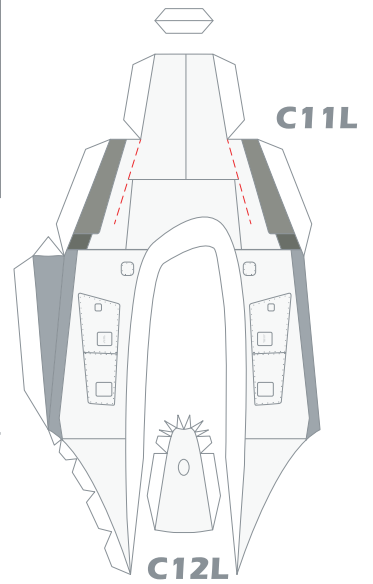
A16L







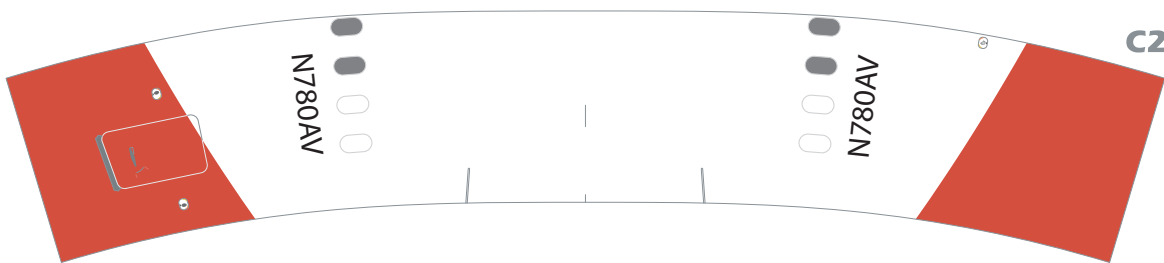
**C1**



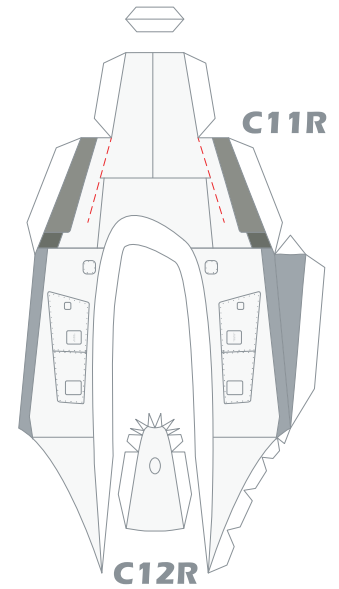
**C11L**

**C12L**

Blank space for 787-9 and 10 variants

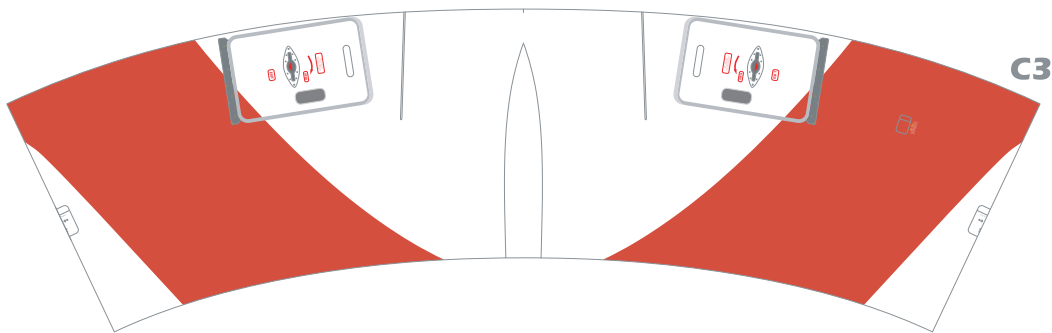


**C2**

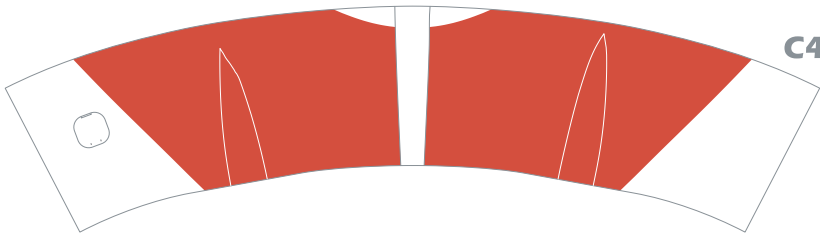


**C11R**

**C12R**



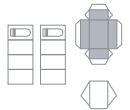
**C3**



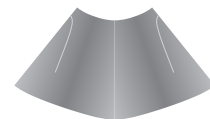
**C4**



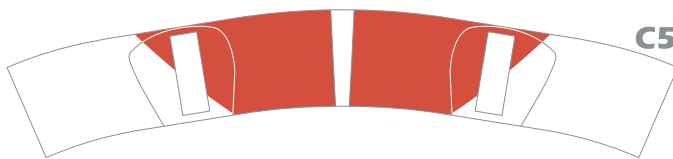
**C8**



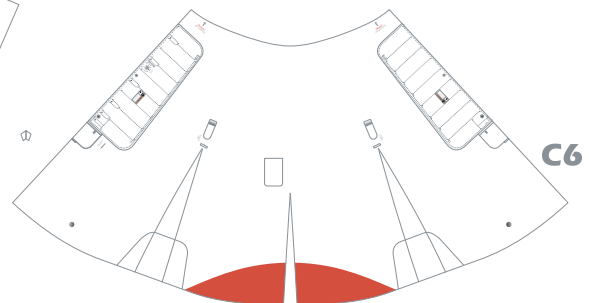
**C9**



**C7**



**C5**



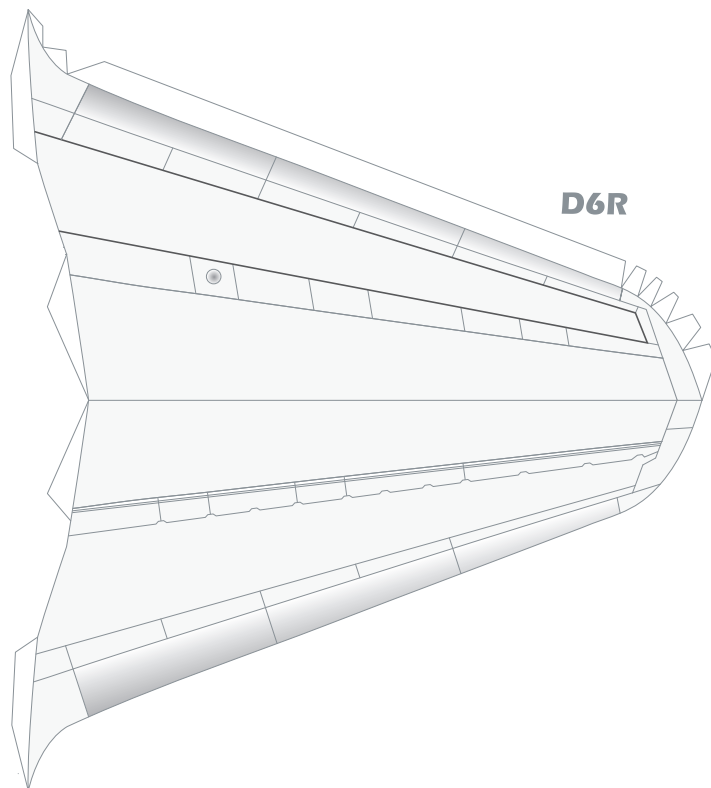
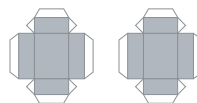
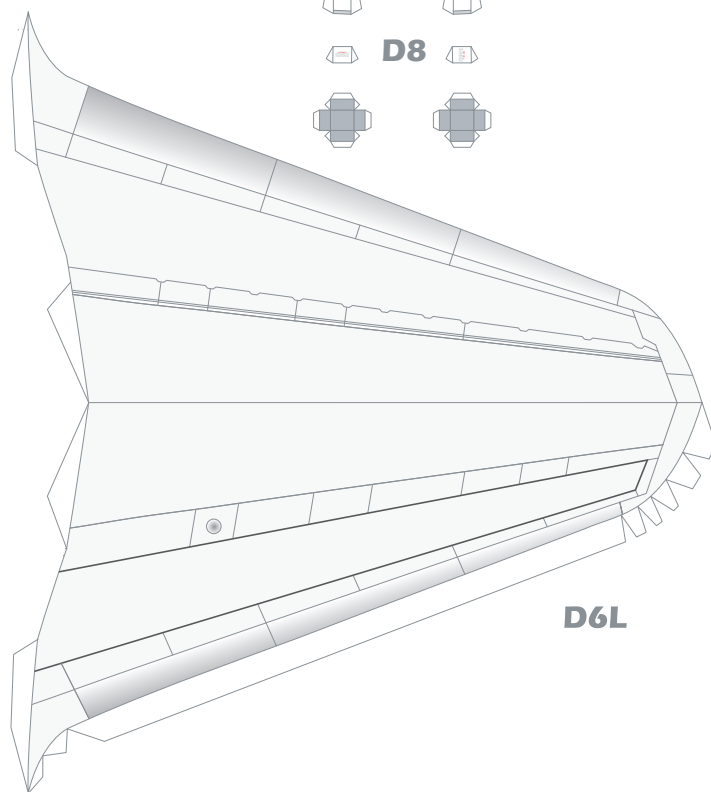
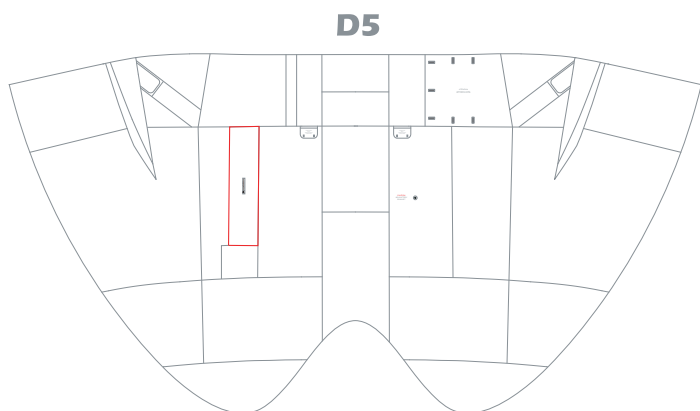
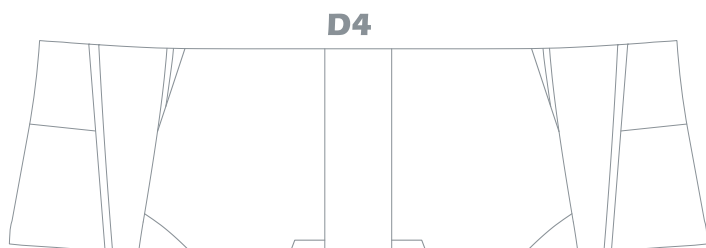
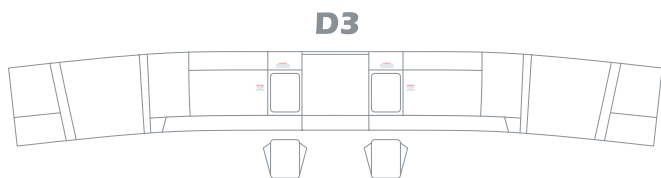
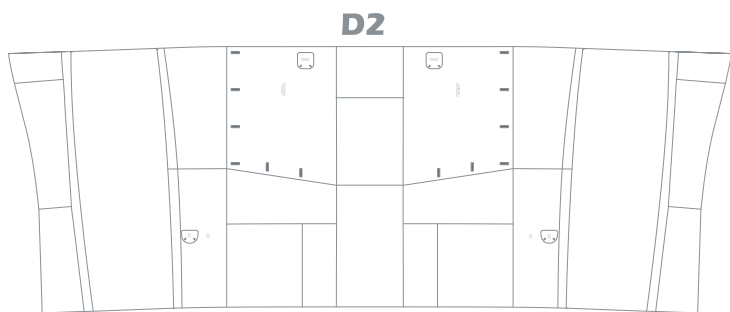
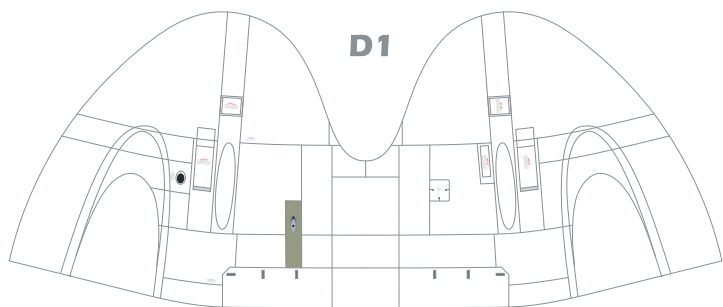
**C6**



**C10L**



**C10R**



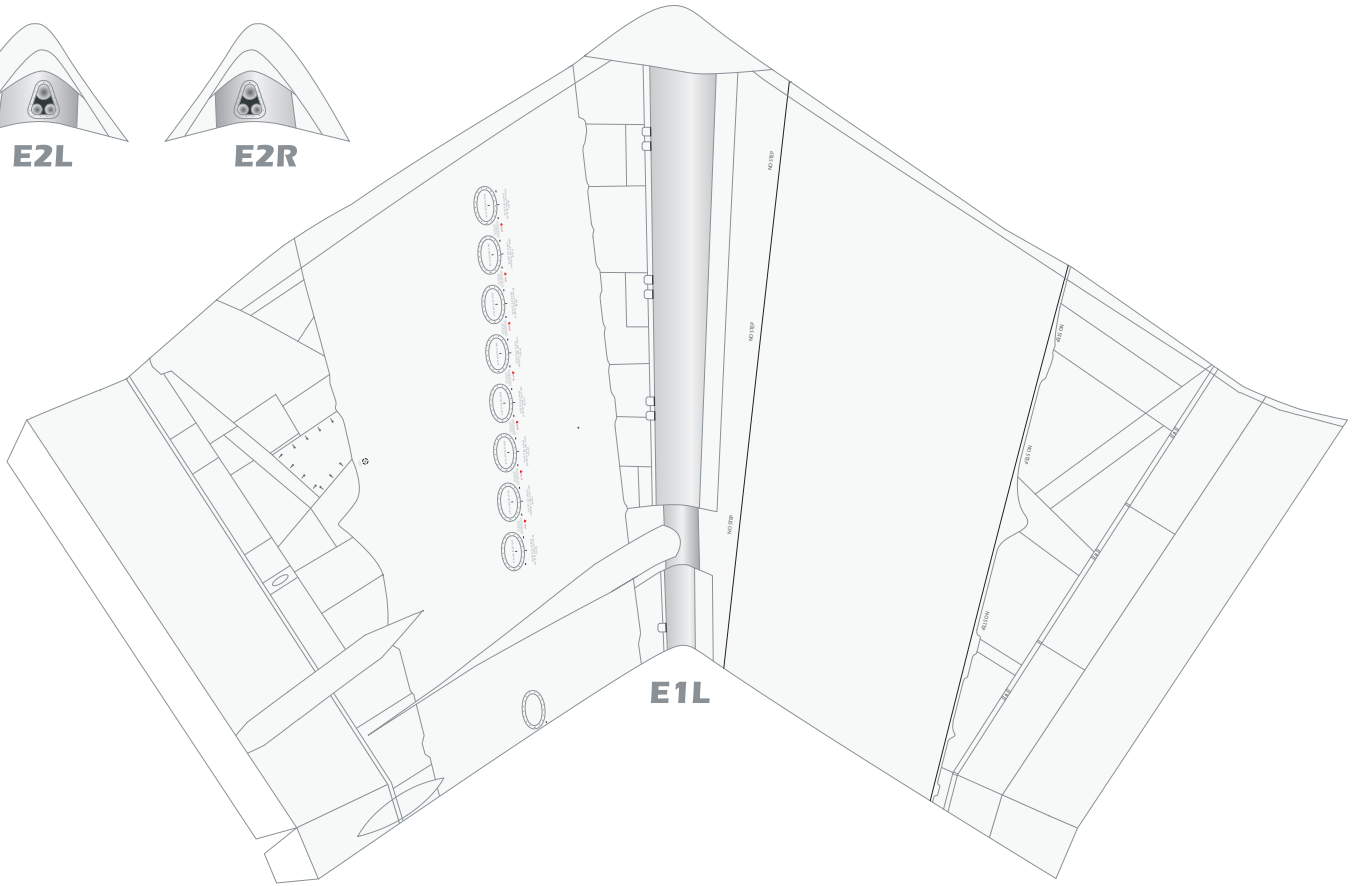




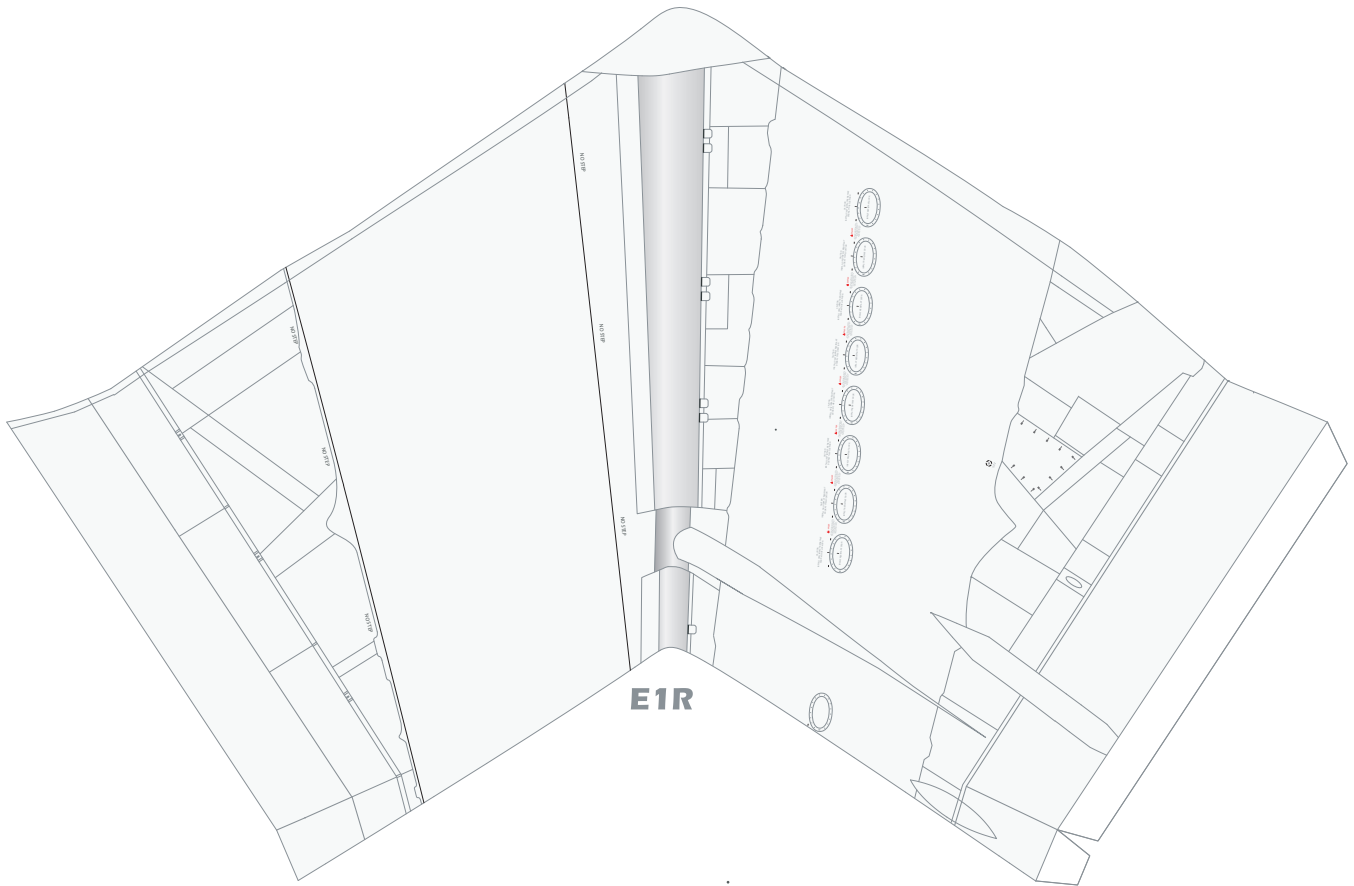
**E2L**



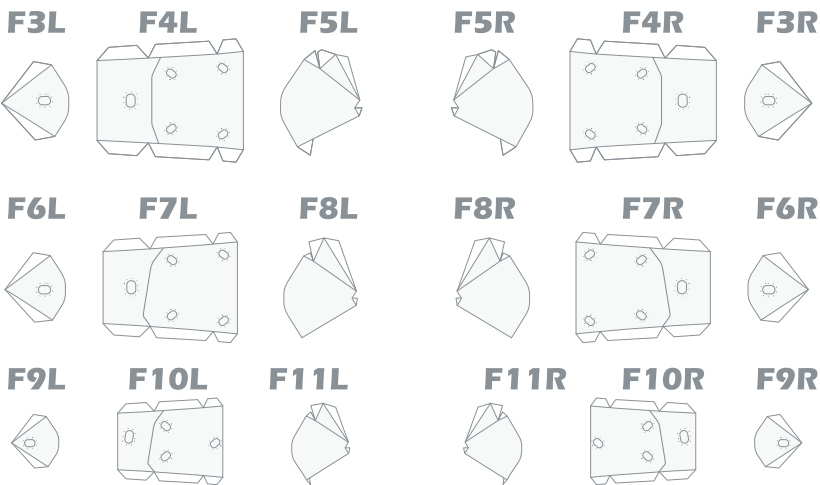
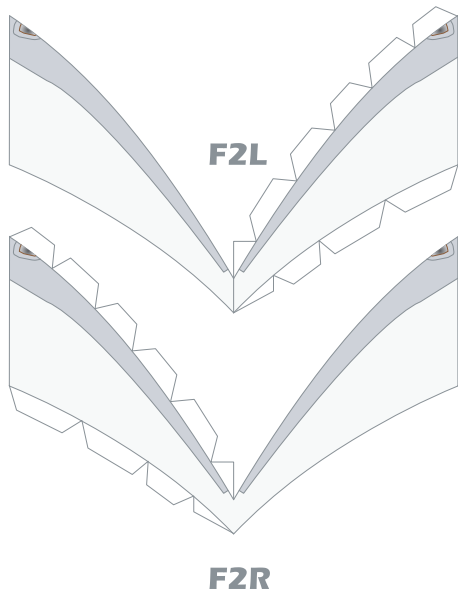
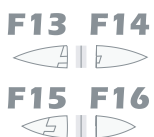
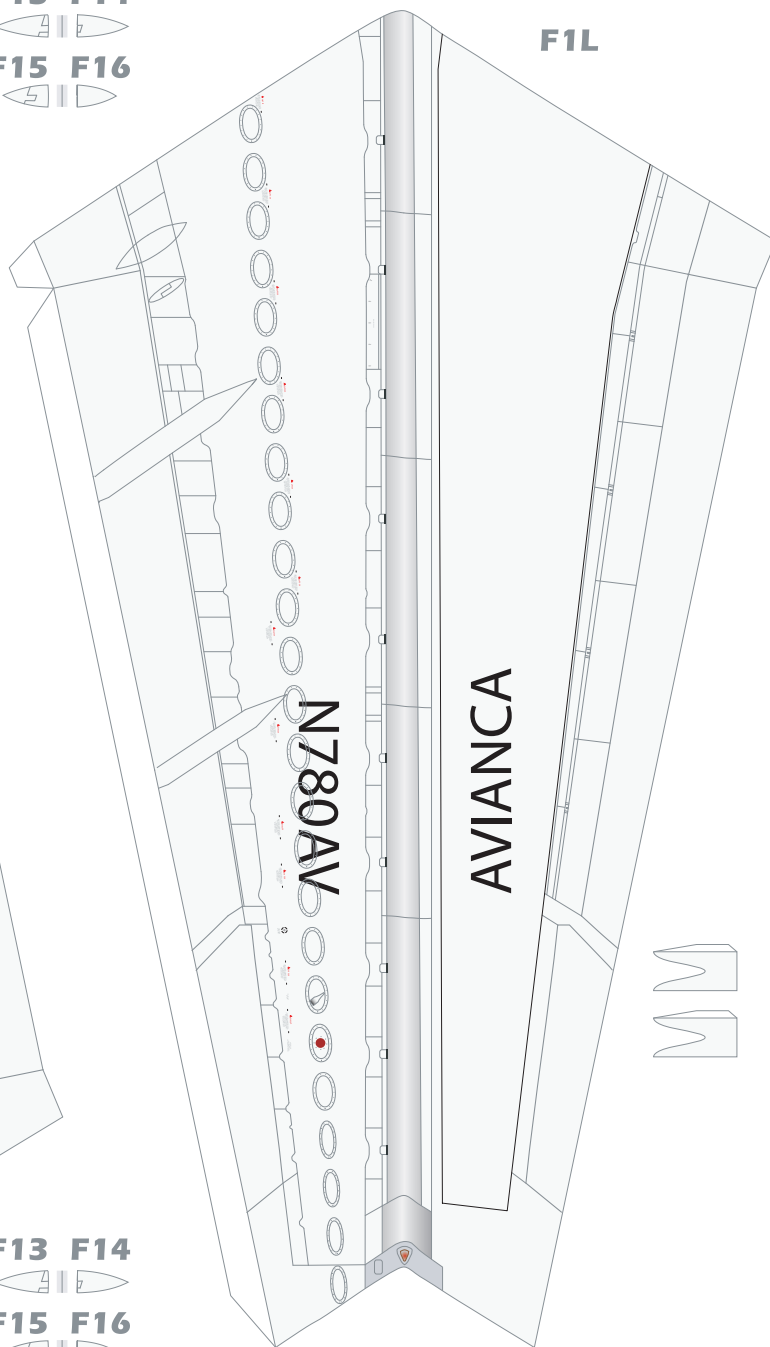
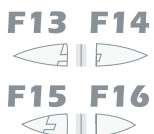
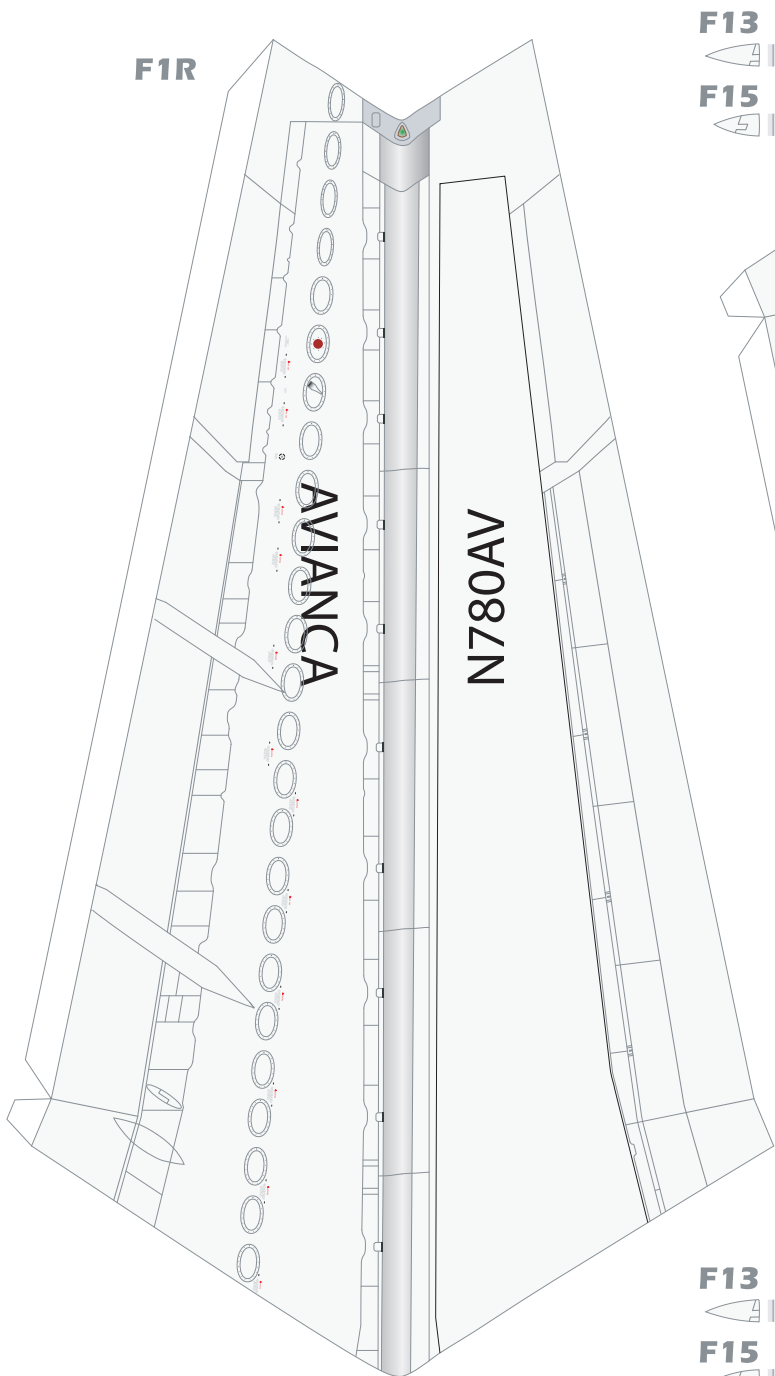
**E2R**

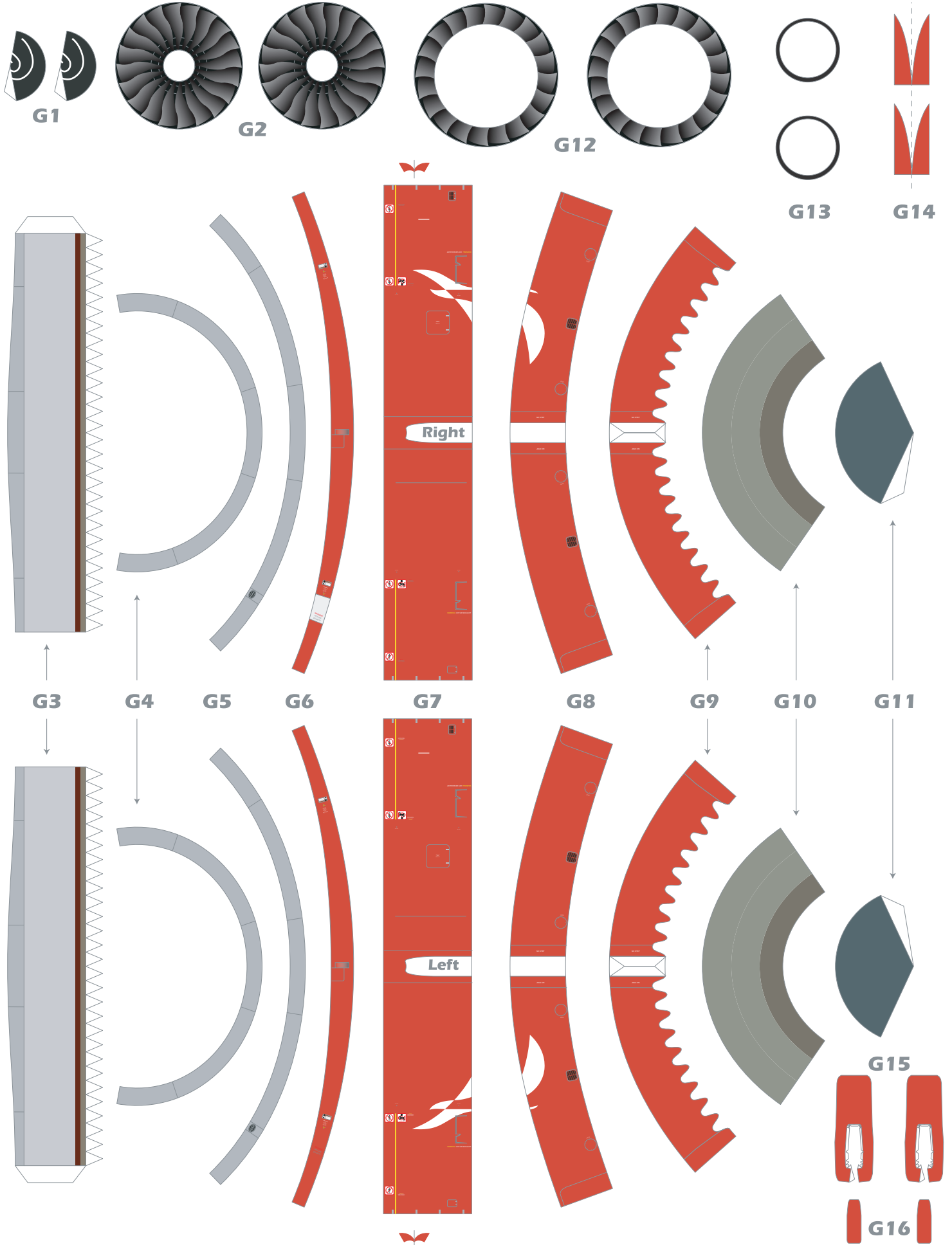


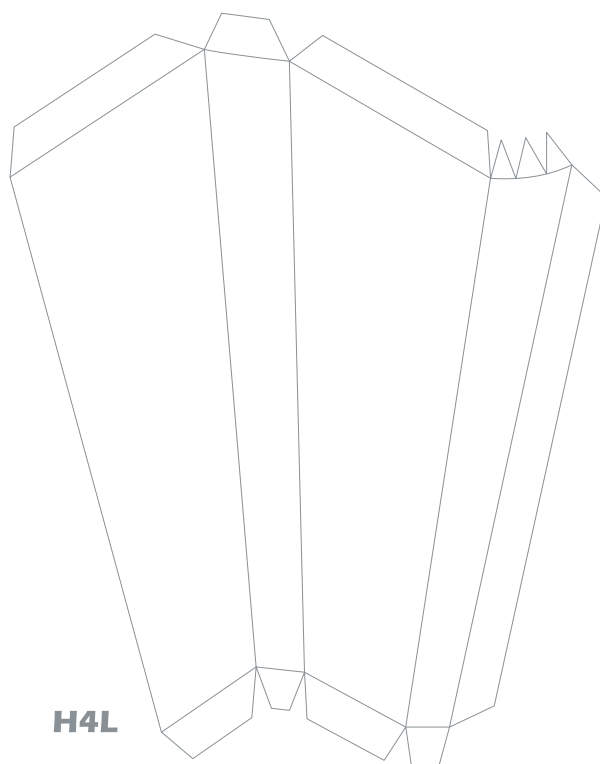
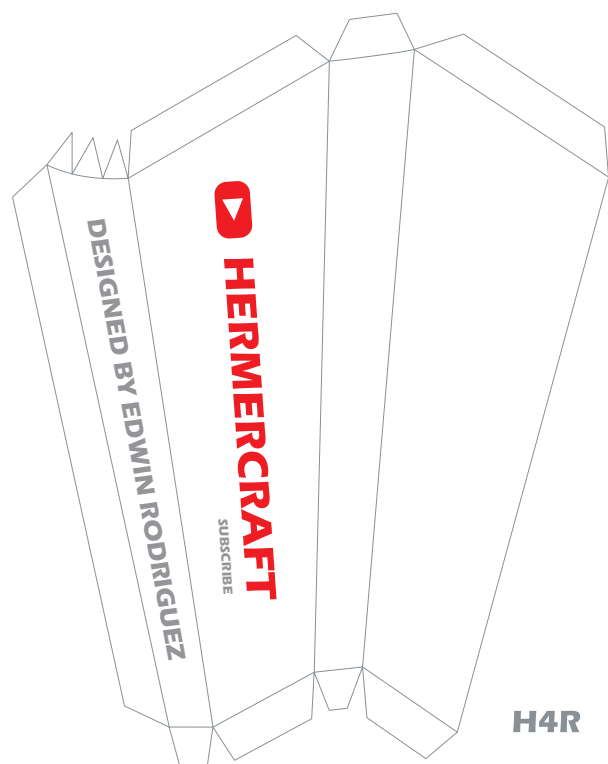
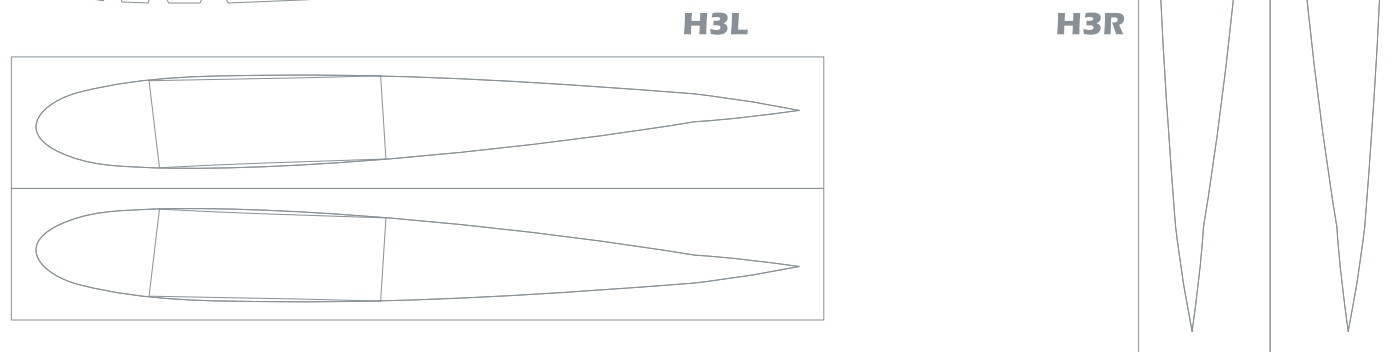
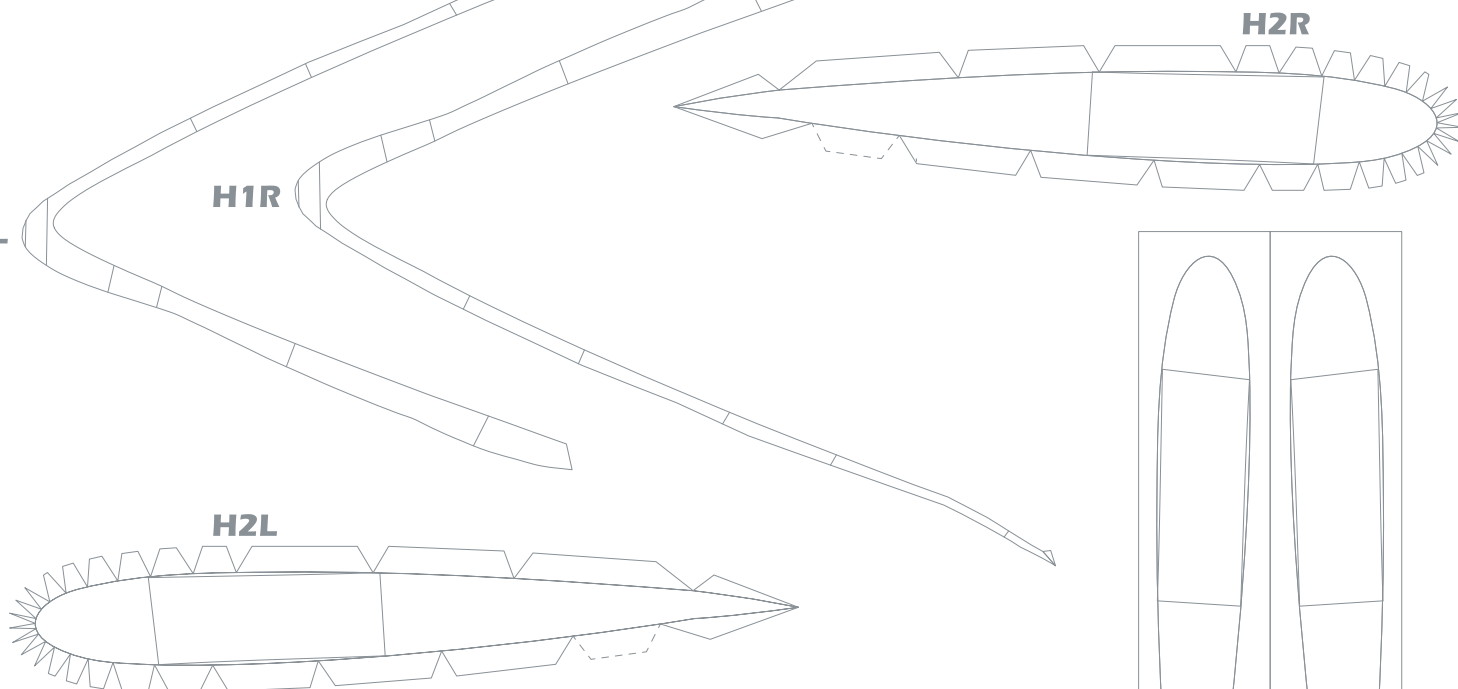
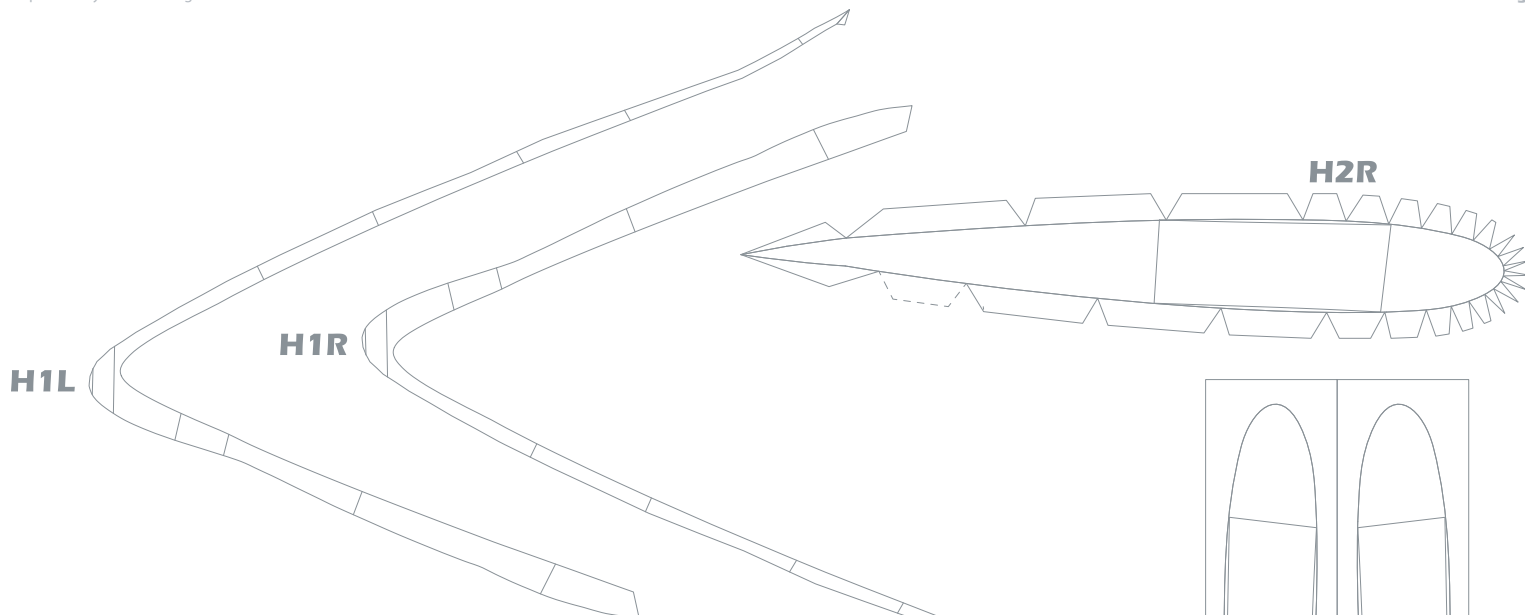
**E1L**

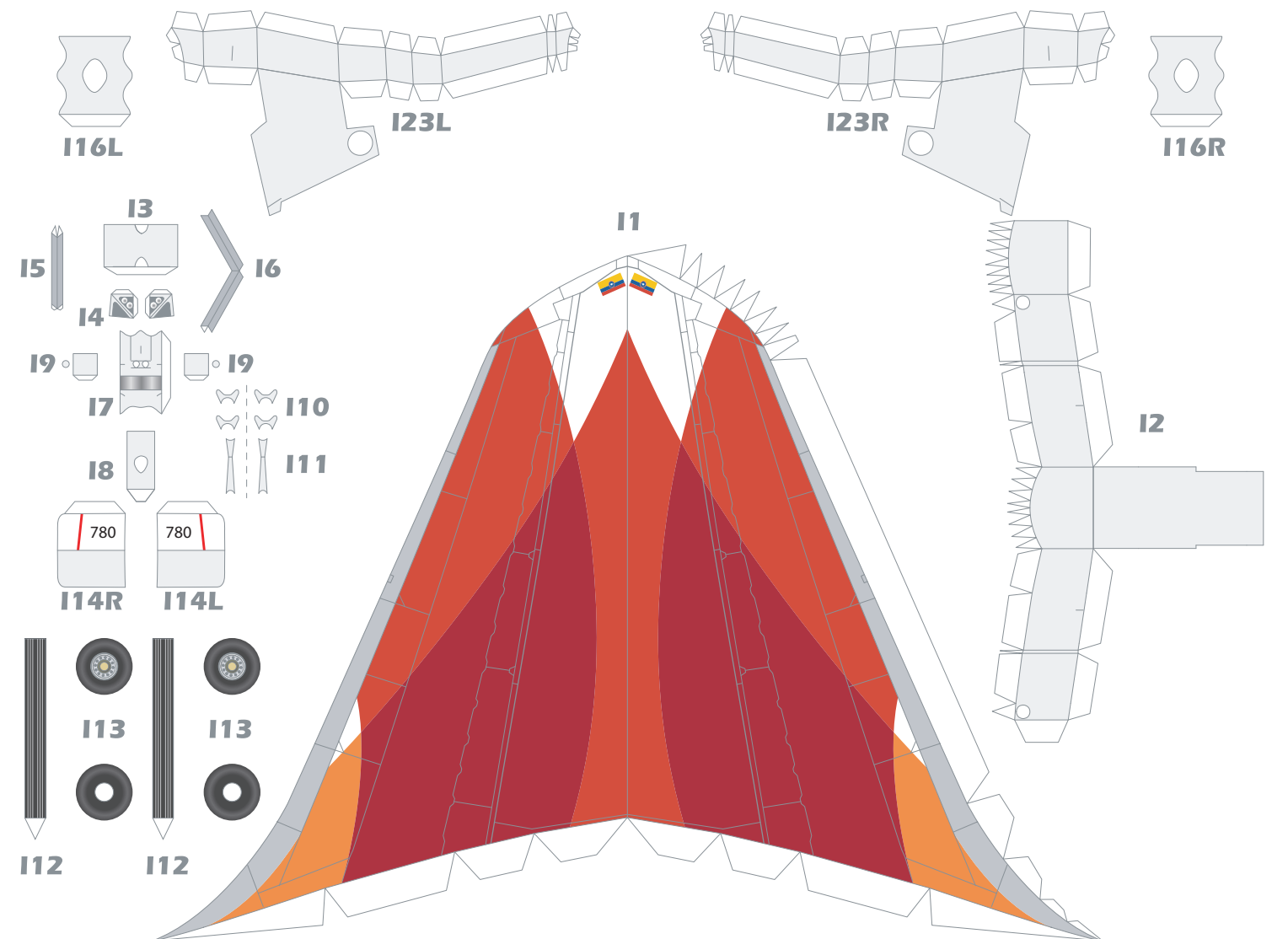
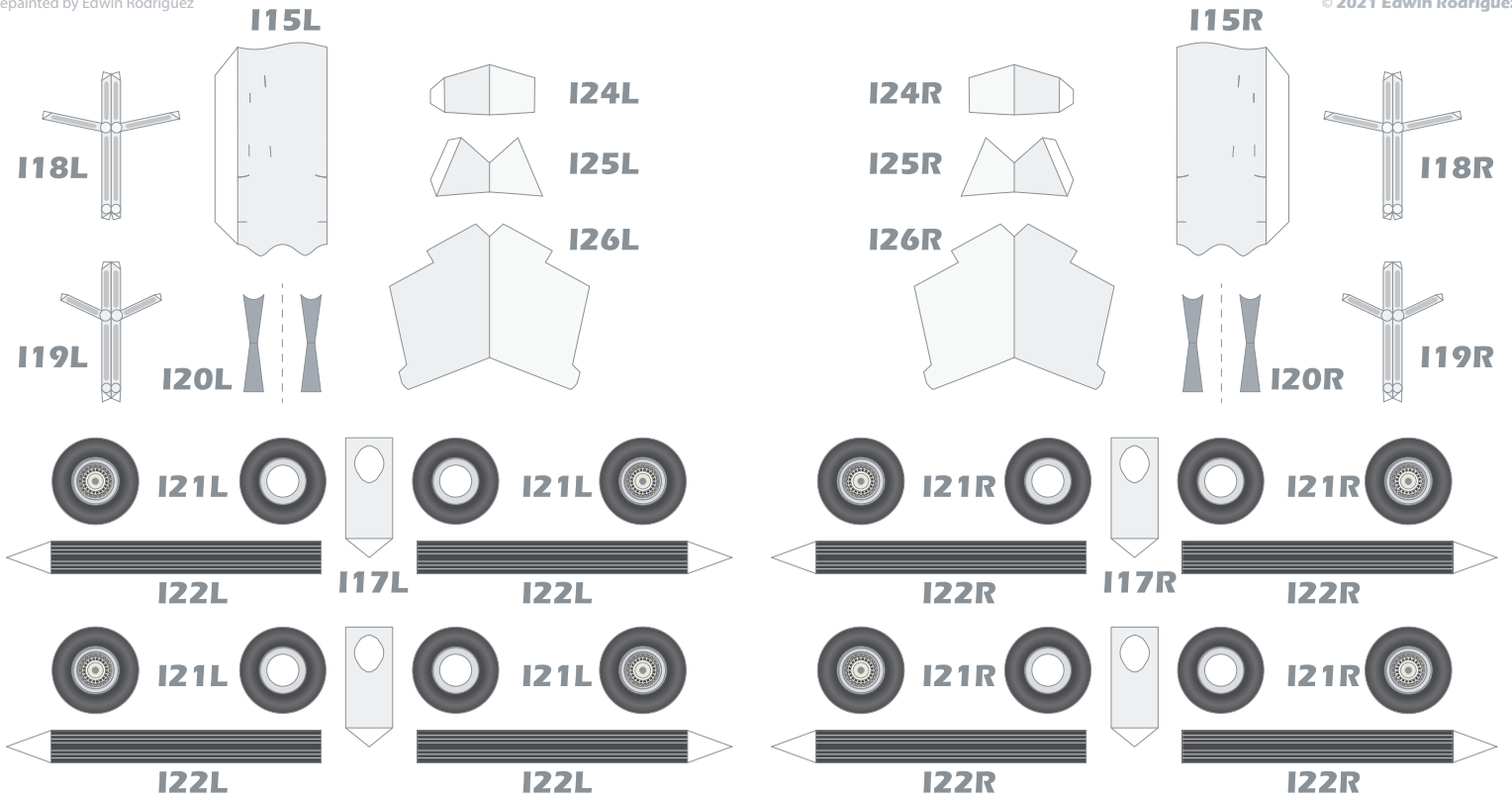


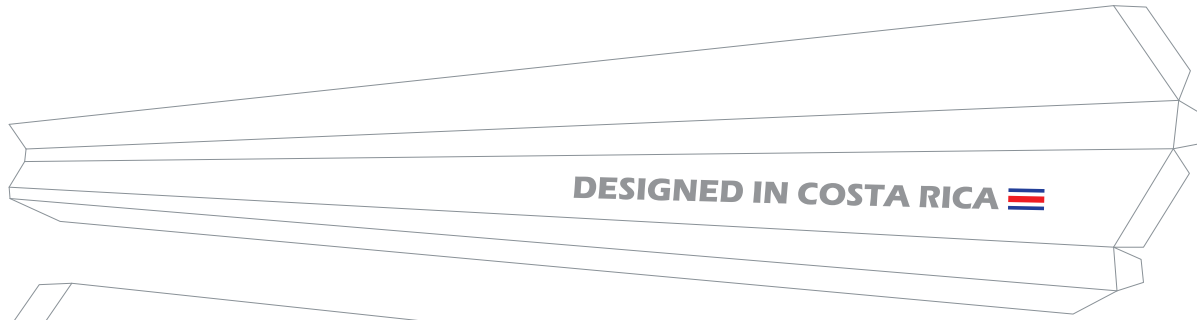
**E1R**











J1L



J1R

