

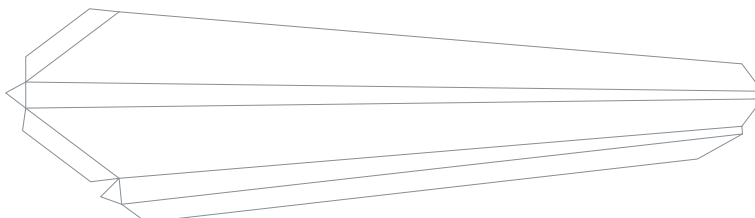
Blank space for 787-9 and 10 variants

Instructions

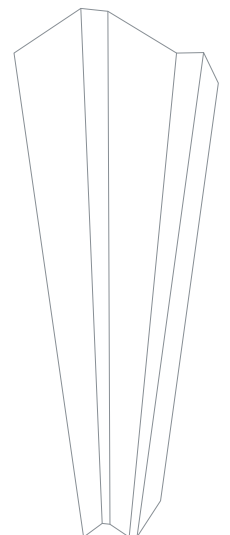


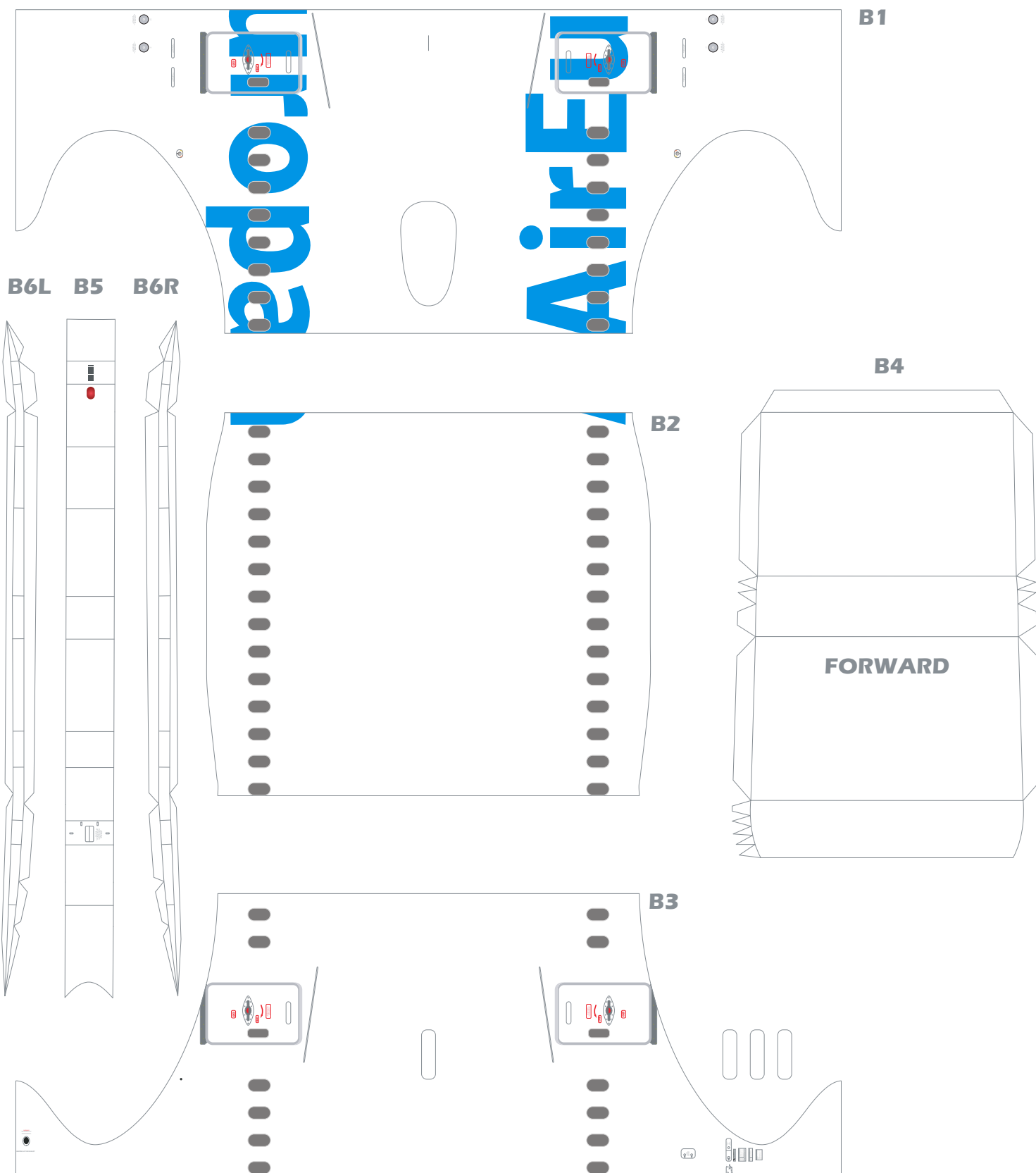
Scan

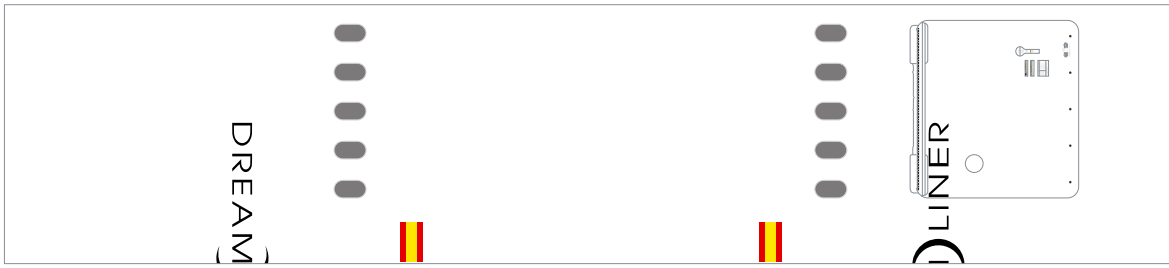
A14



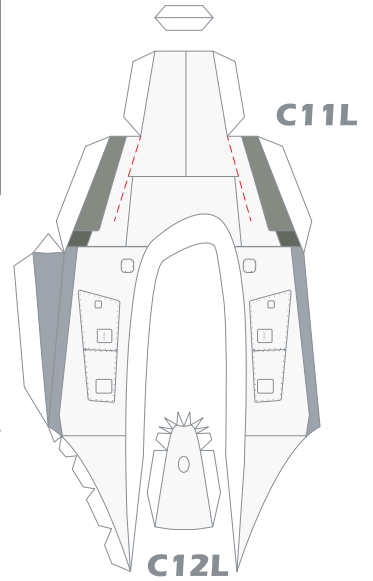
A16L







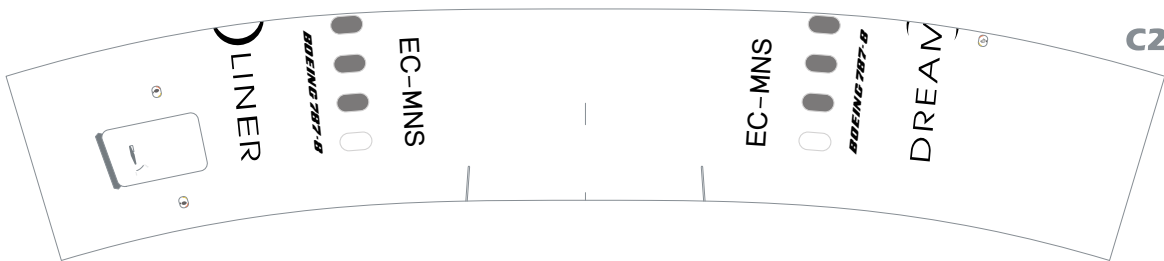
C1



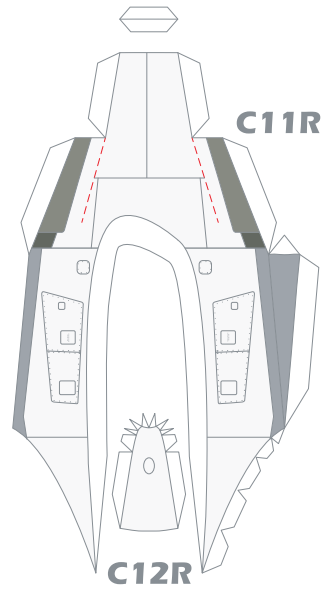
C11L

C12L

Blank space for 787-9 and 10 variants

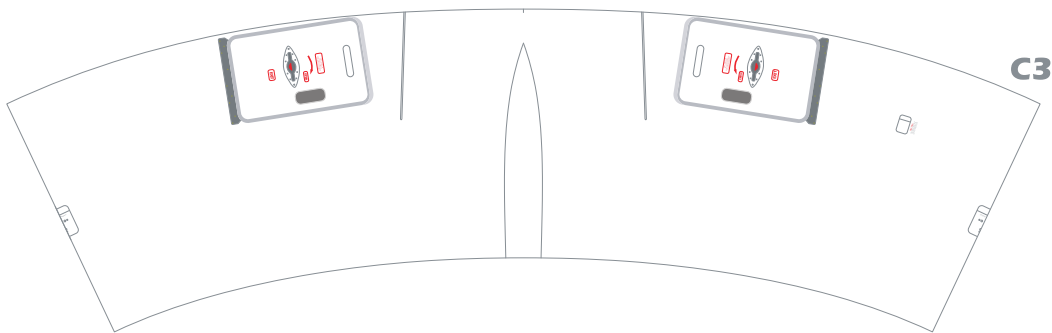


C2

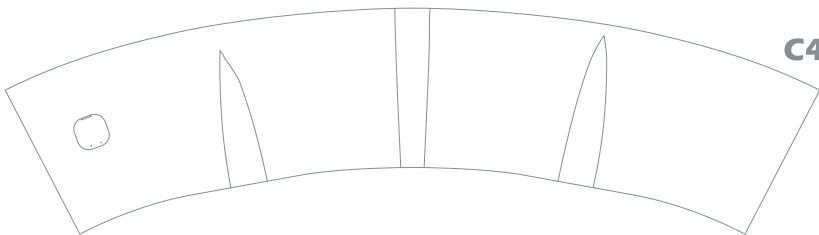


C11R

C12R



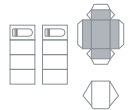
C3



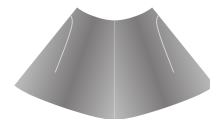
C4



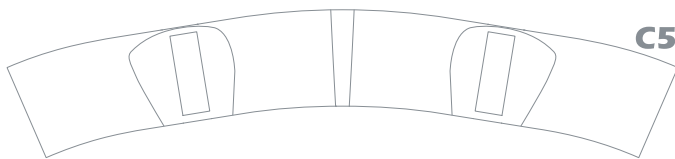
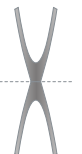
C8



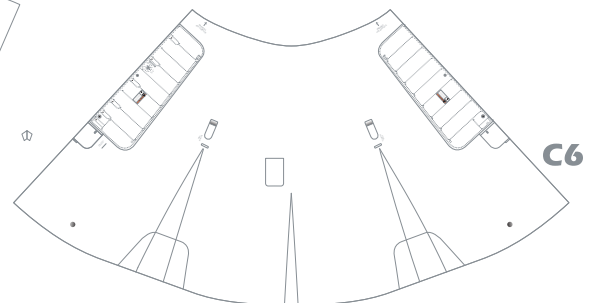
C9



C7



C5



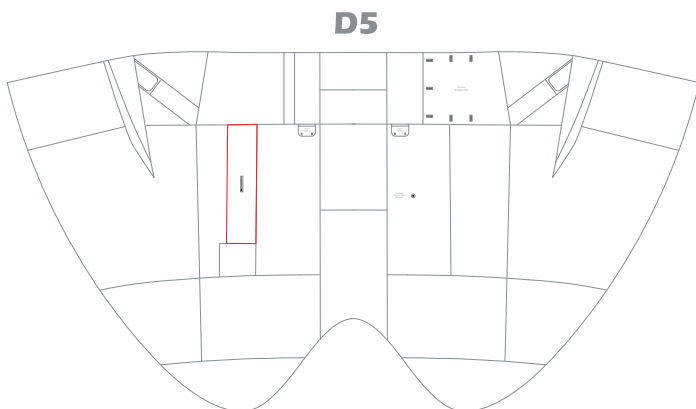
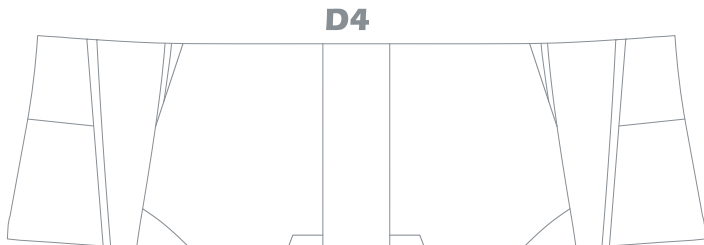
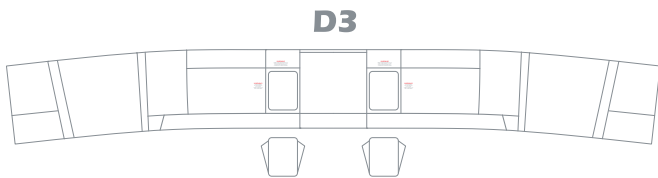
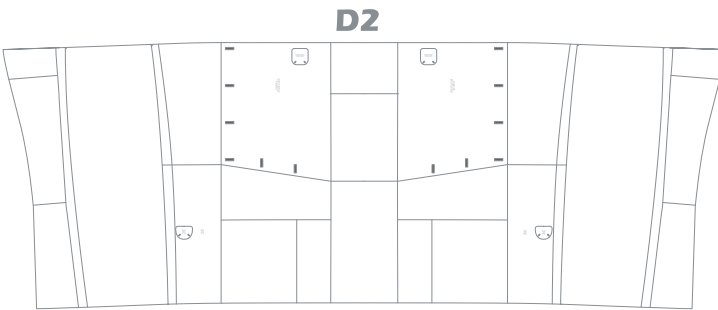
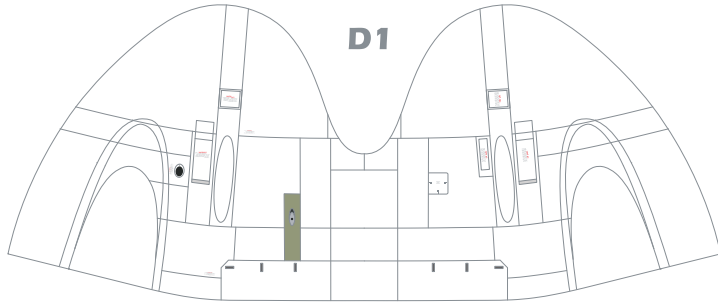
C6



C10L



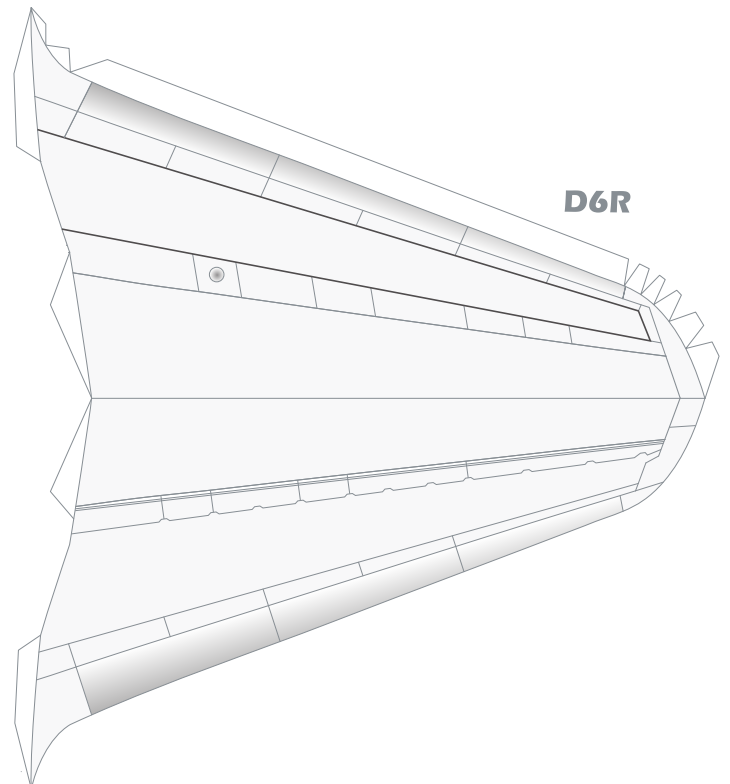
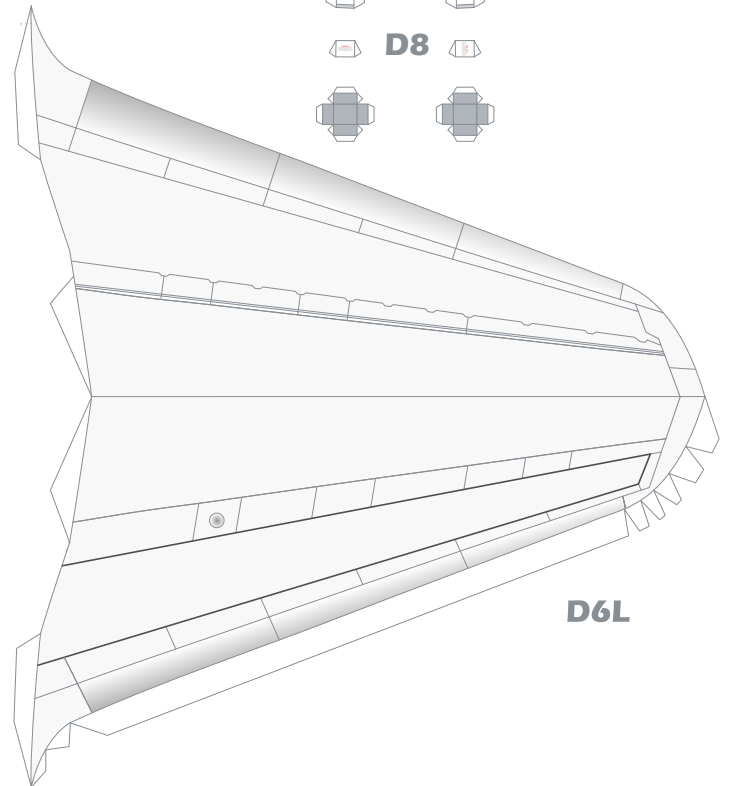
C10R

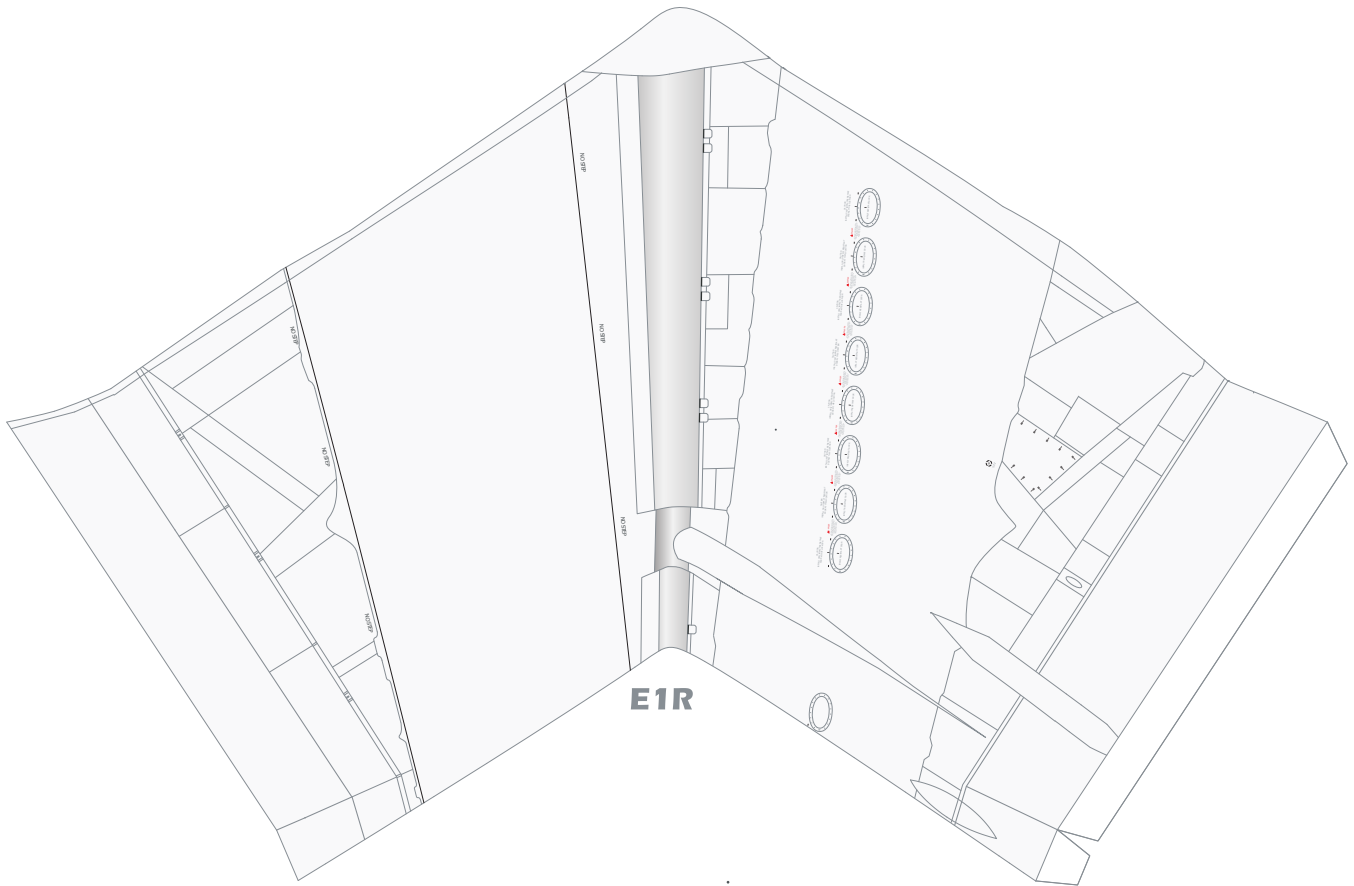
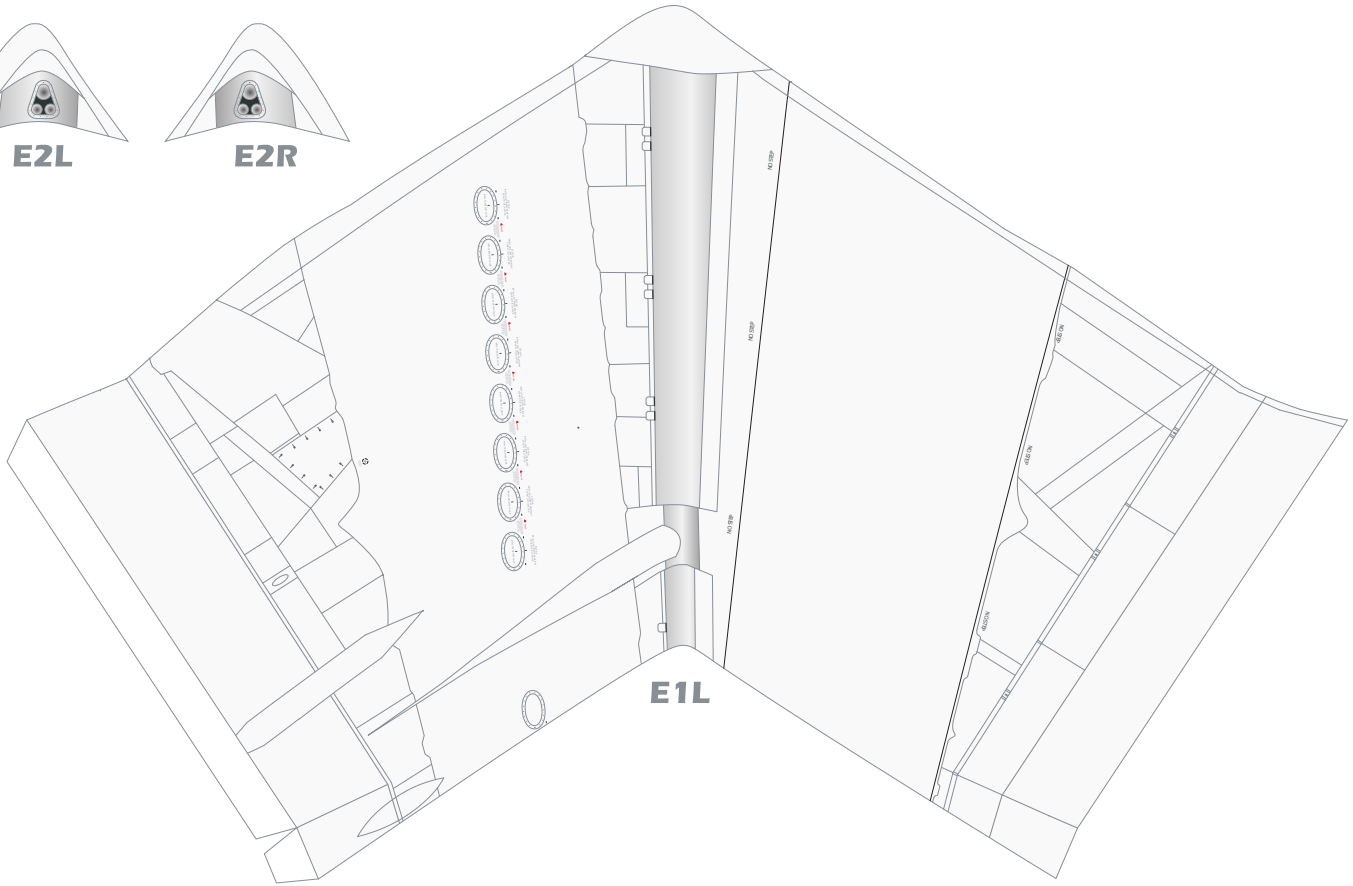


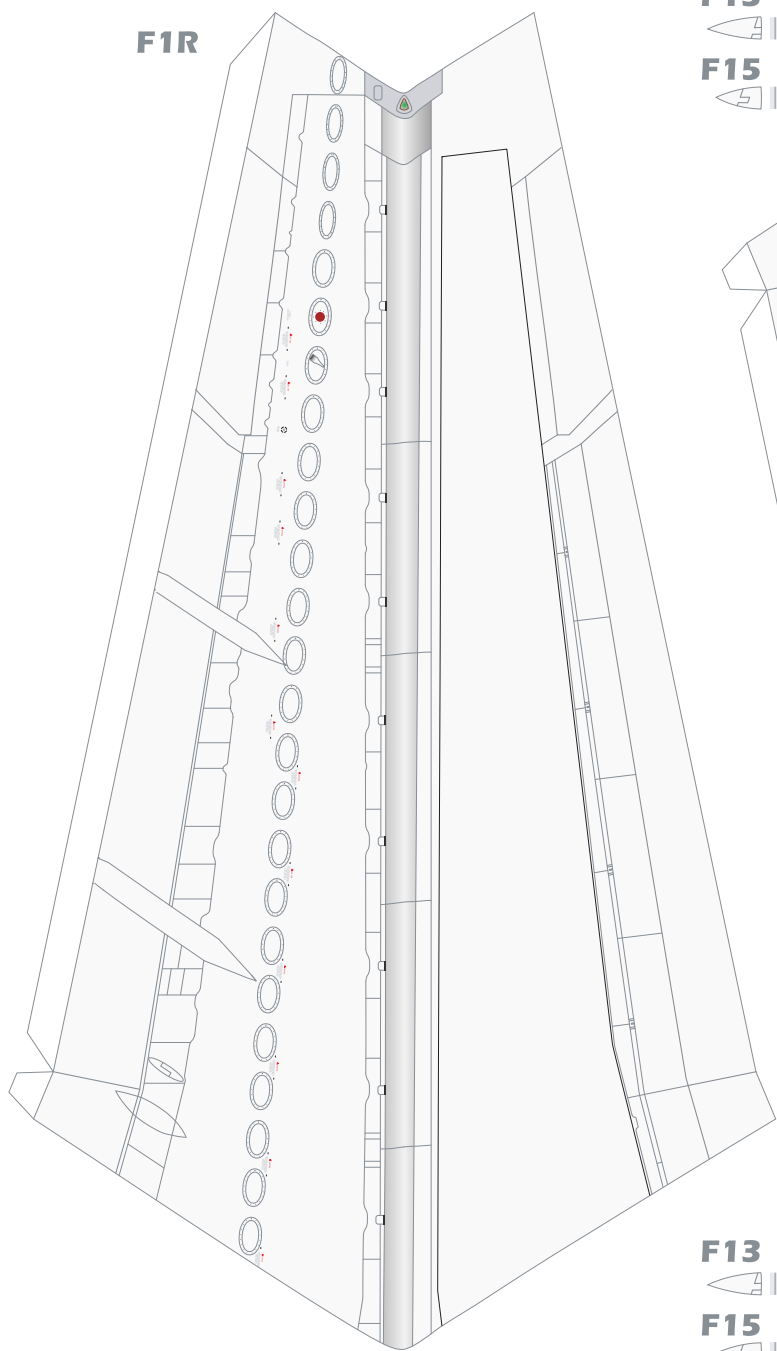
D7



D8



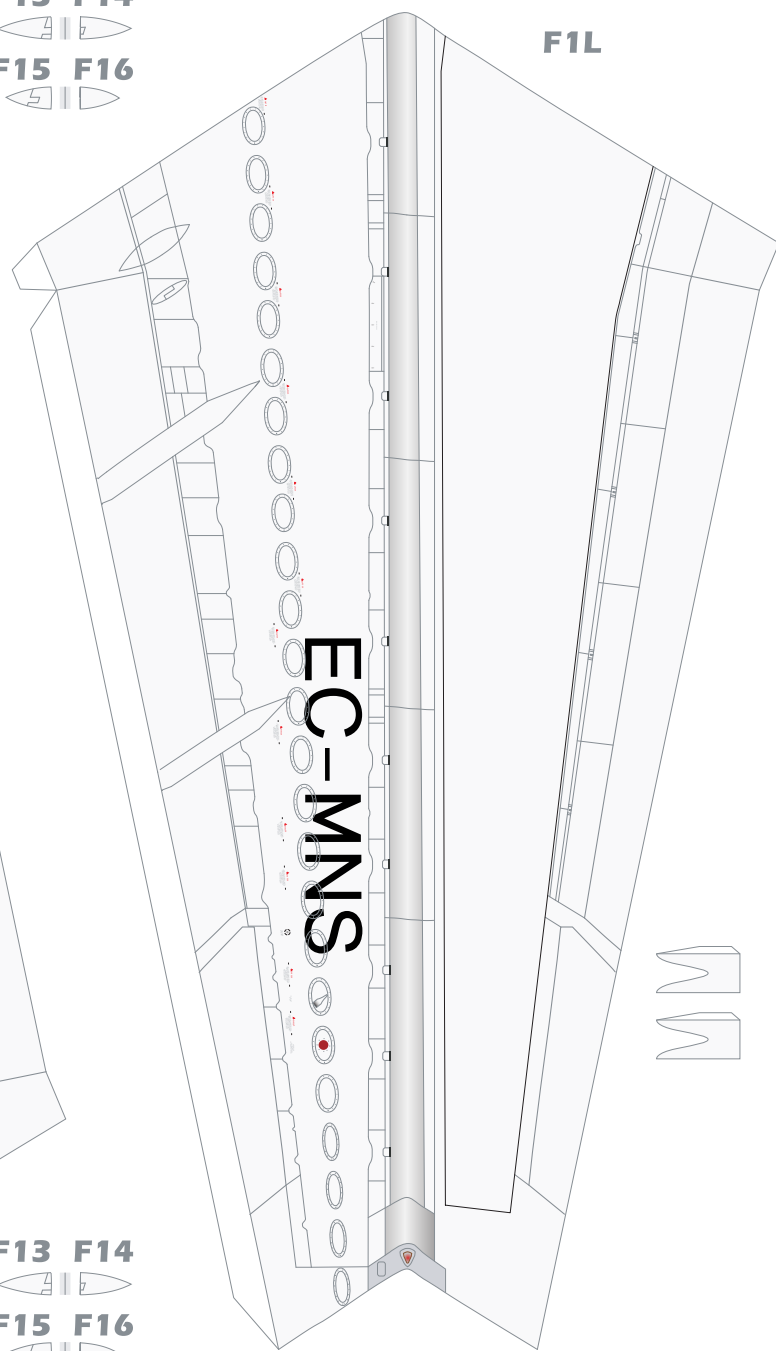




F13 F14



F15 F16

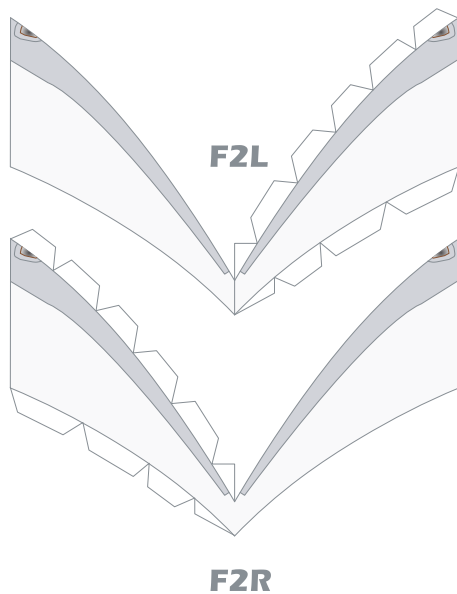


F1L

F13 F14



F15 F16



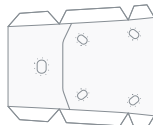
F2L

F2R

F3L



F4L



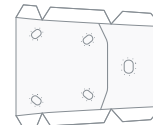
F5L



F5R



F4R



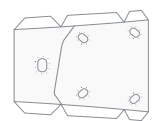
F3R



F6L



F7L



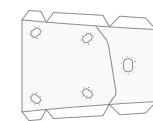
F8L



F8R



F7R



F6R



F9L



F10L



F11L



F11R

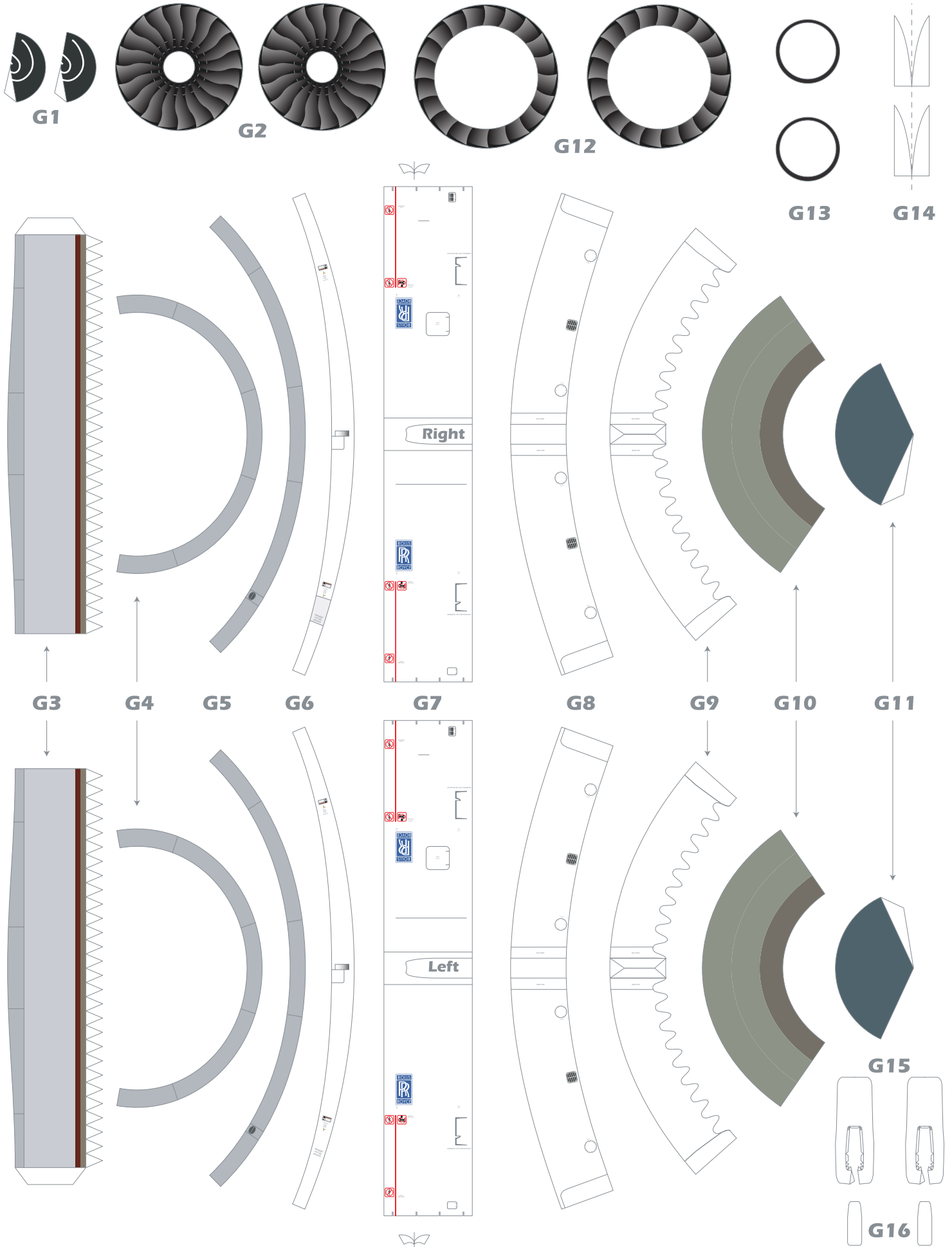


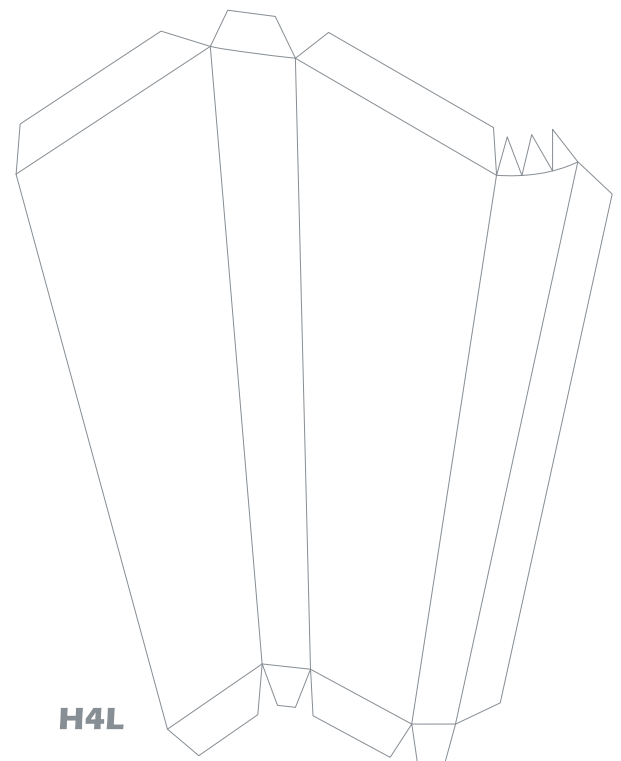
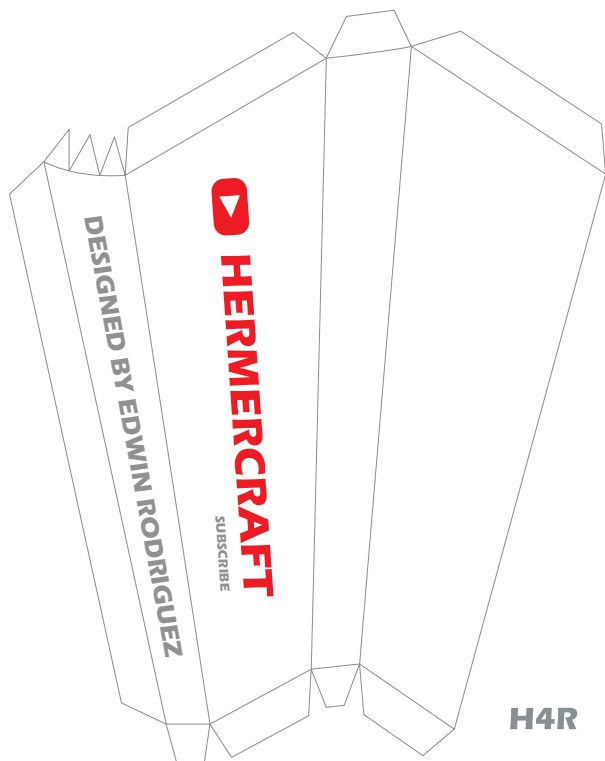
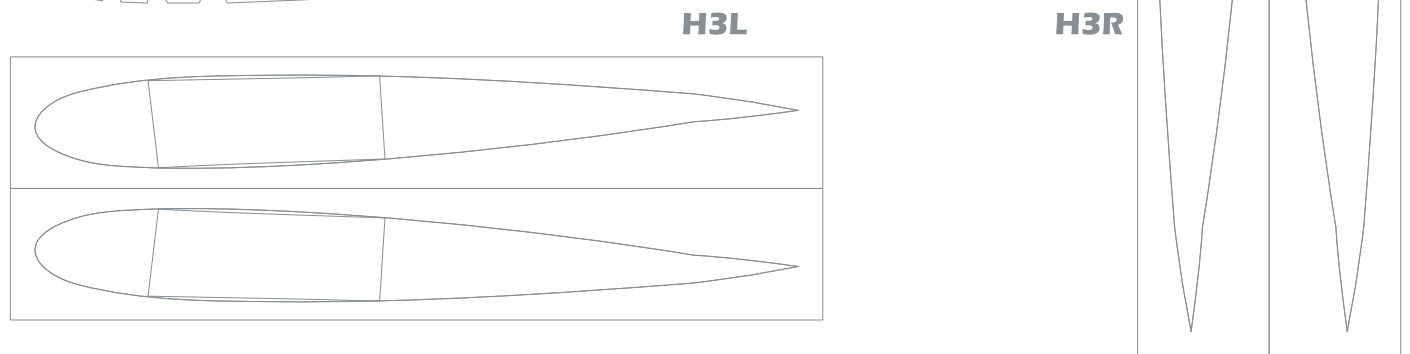
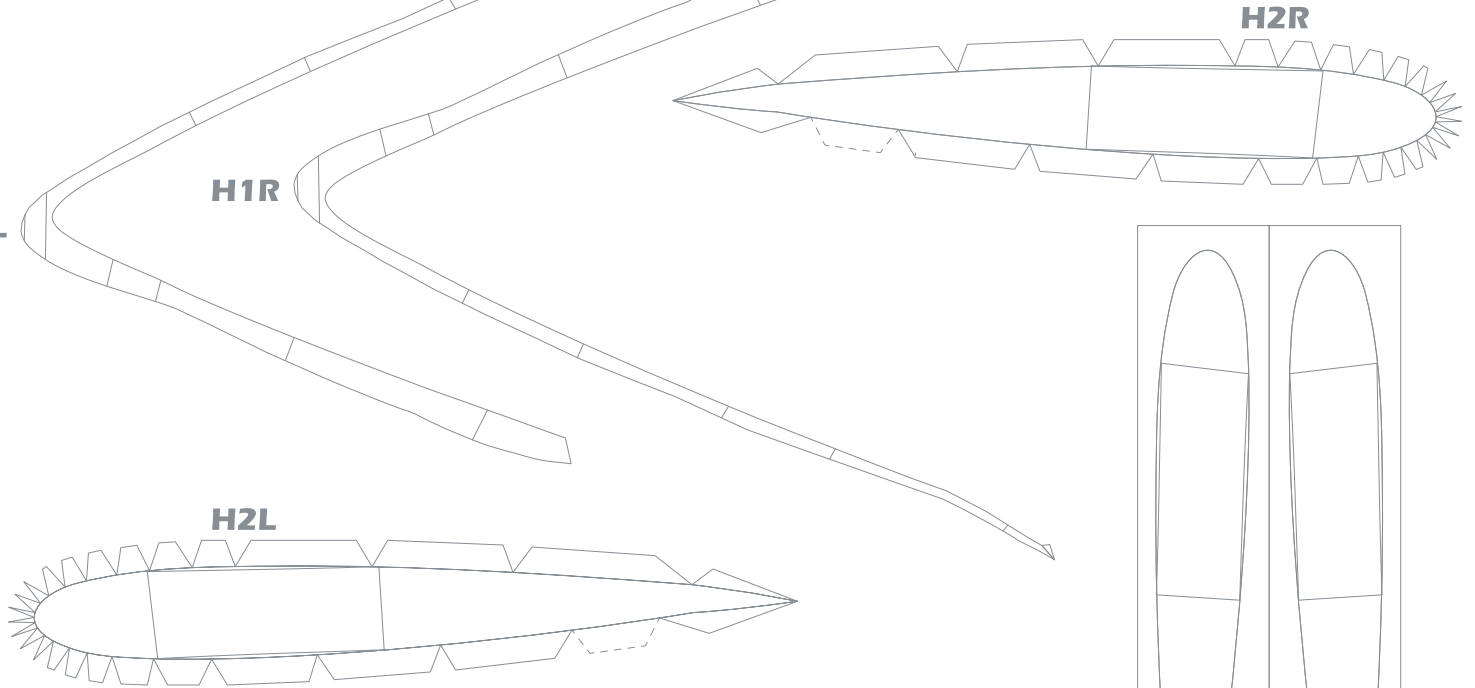
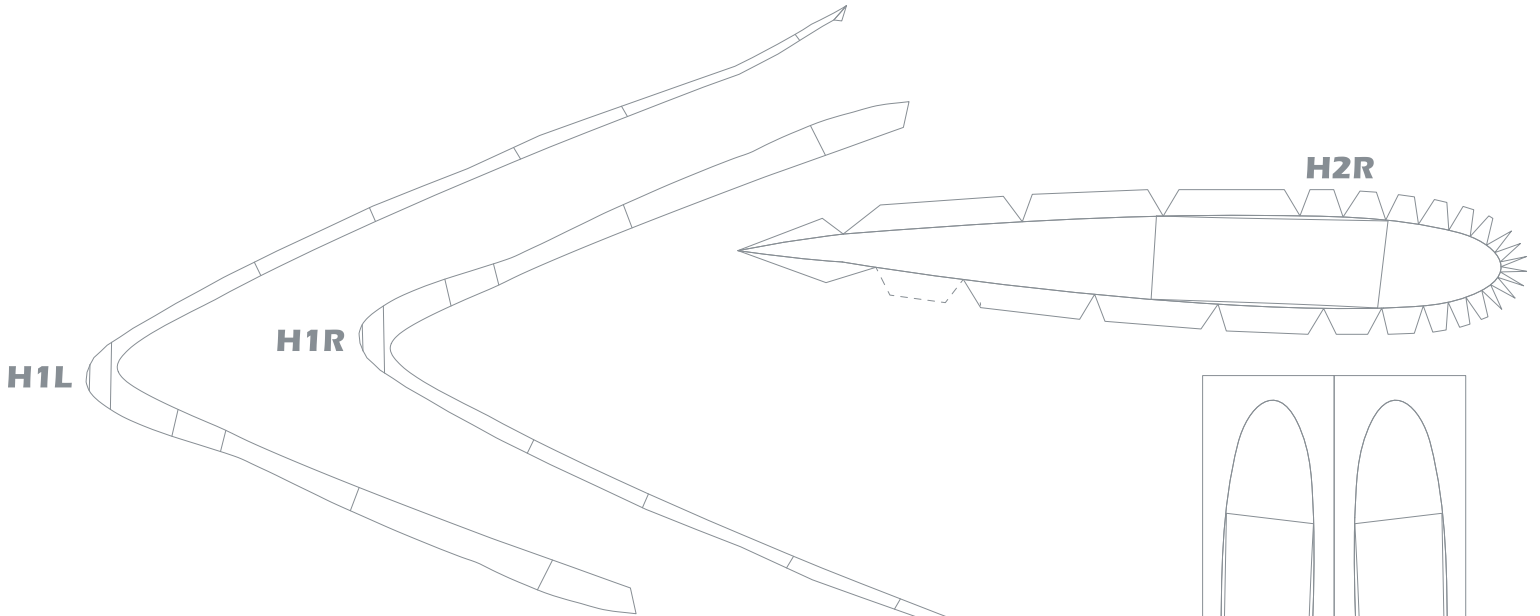
F10R

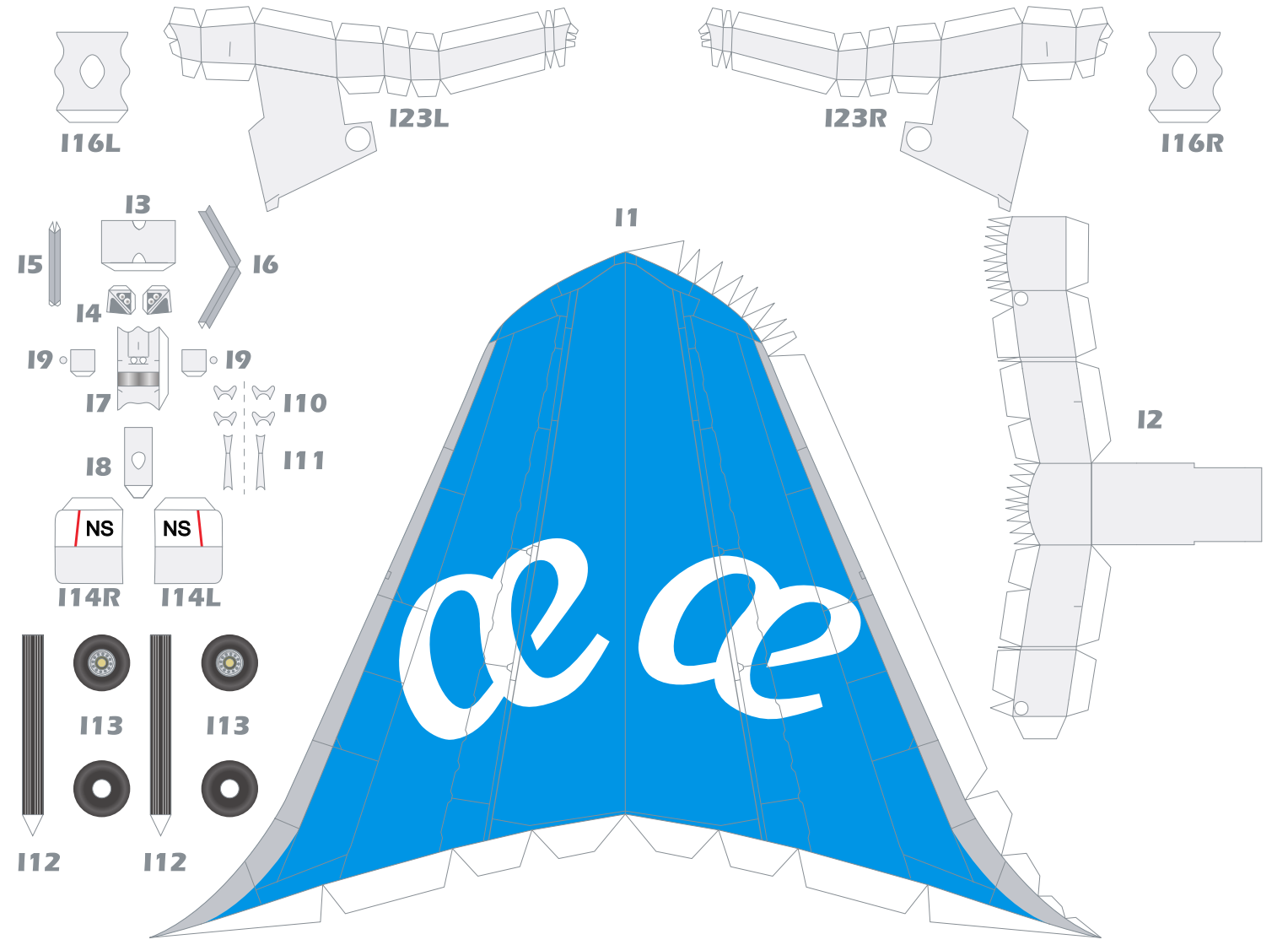
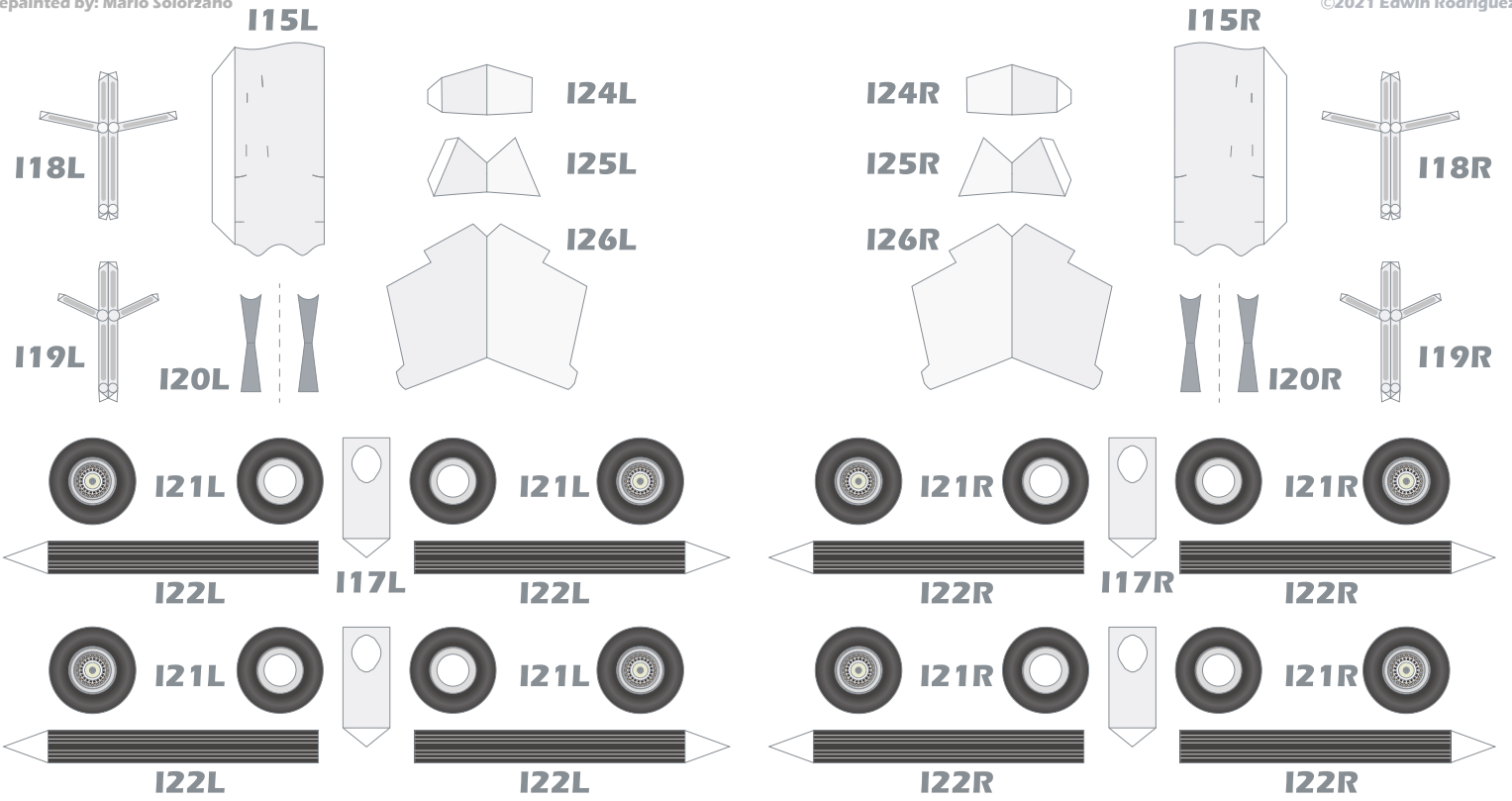


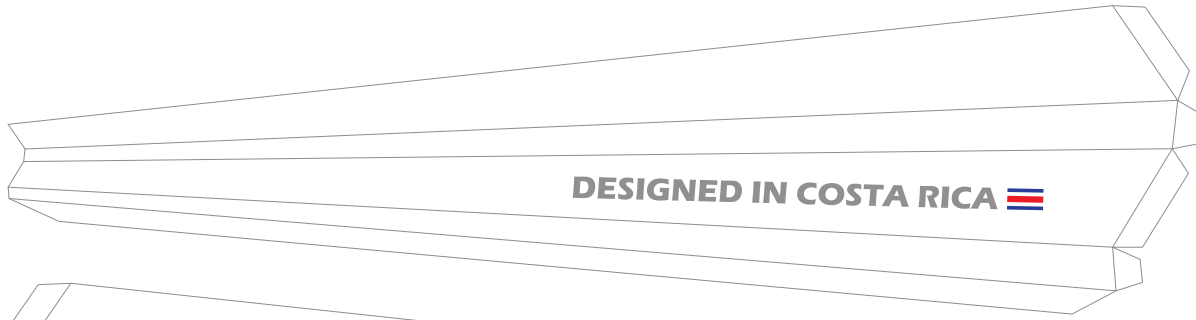
F9R











J1L



J1R

