



Wow Air AIRBUS A330-300

WOW
air



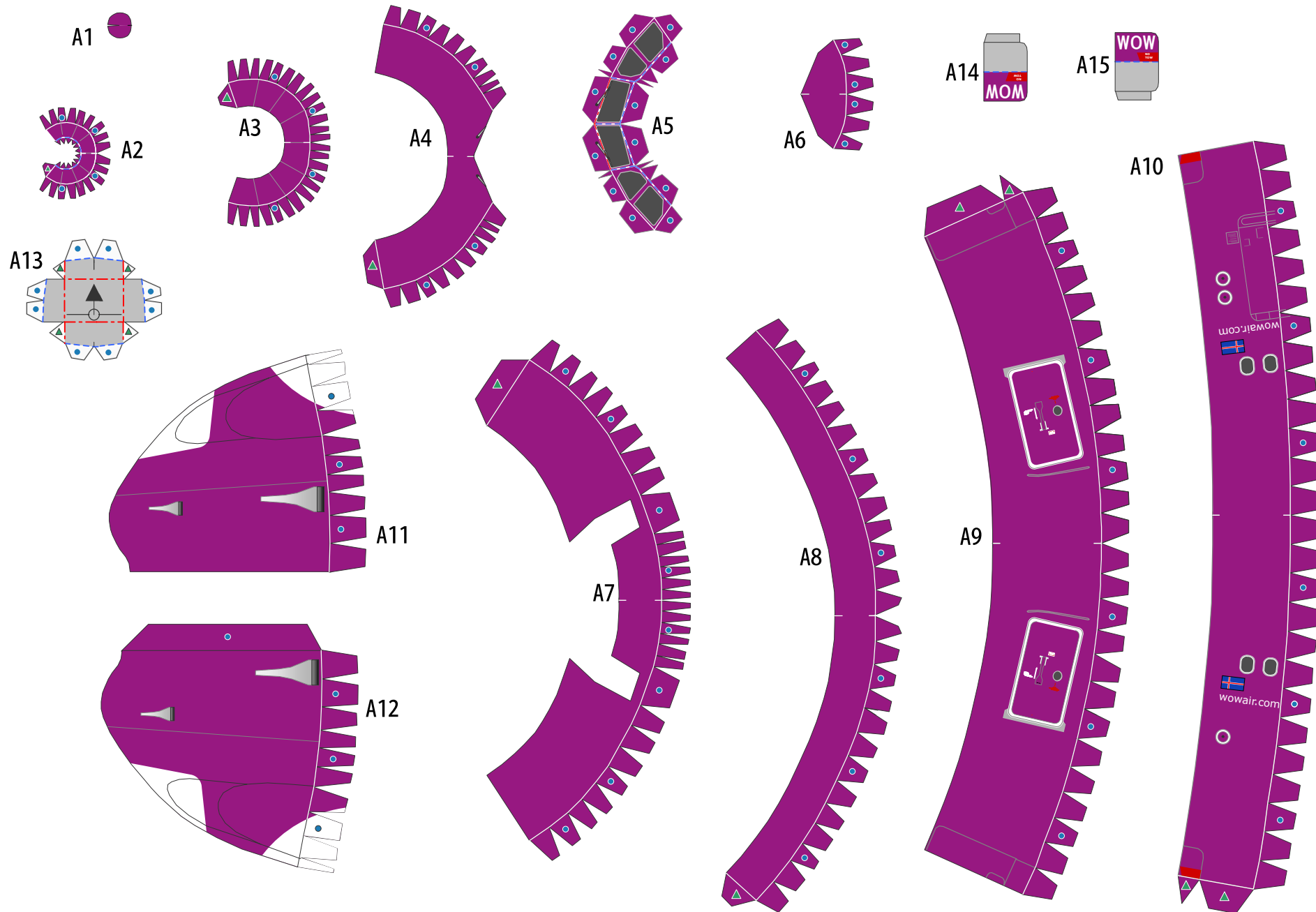
| | |
|--------------------------------|-----------------------------------|
| Completed Model (Total length) | About 575mm (Scale - About 1:120) |
| (Total width) | About 510mm |
| Pattern | 17 pages |
| Assembly Instructions | 16 pages |

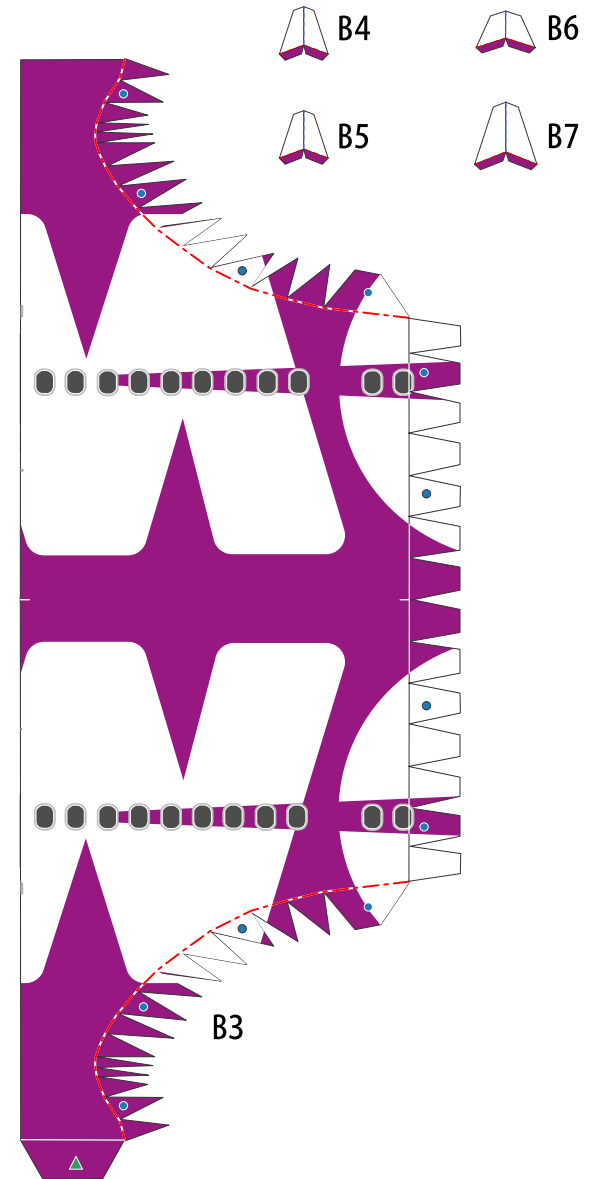
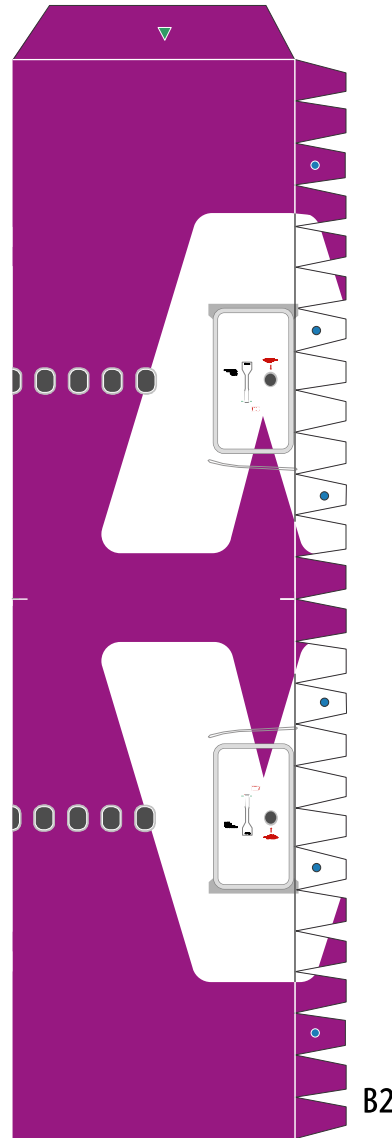
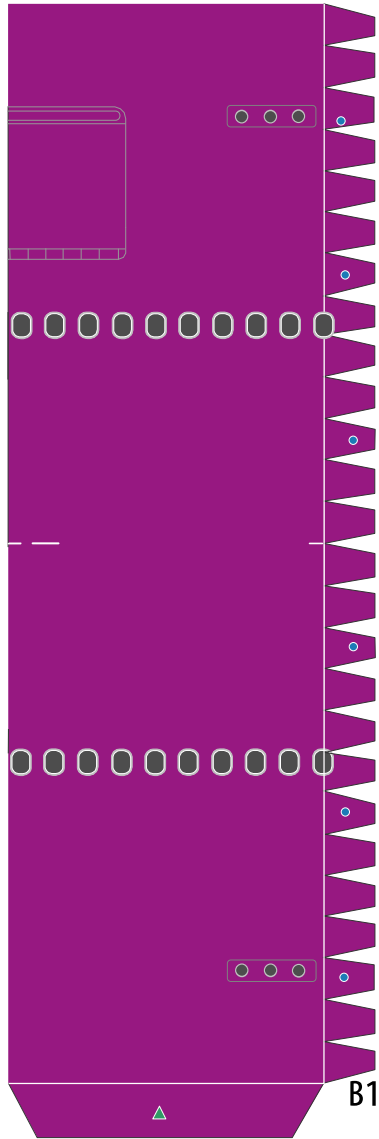
WOW air was an Icelandic ultra low-cost carrier founded in 2011 that operated services between Iceland, Europe, Asia, and North America. The airline was headquartered in Reykjavík and based at Keflavík International Airport. It ceased operations on 28 March 2019.

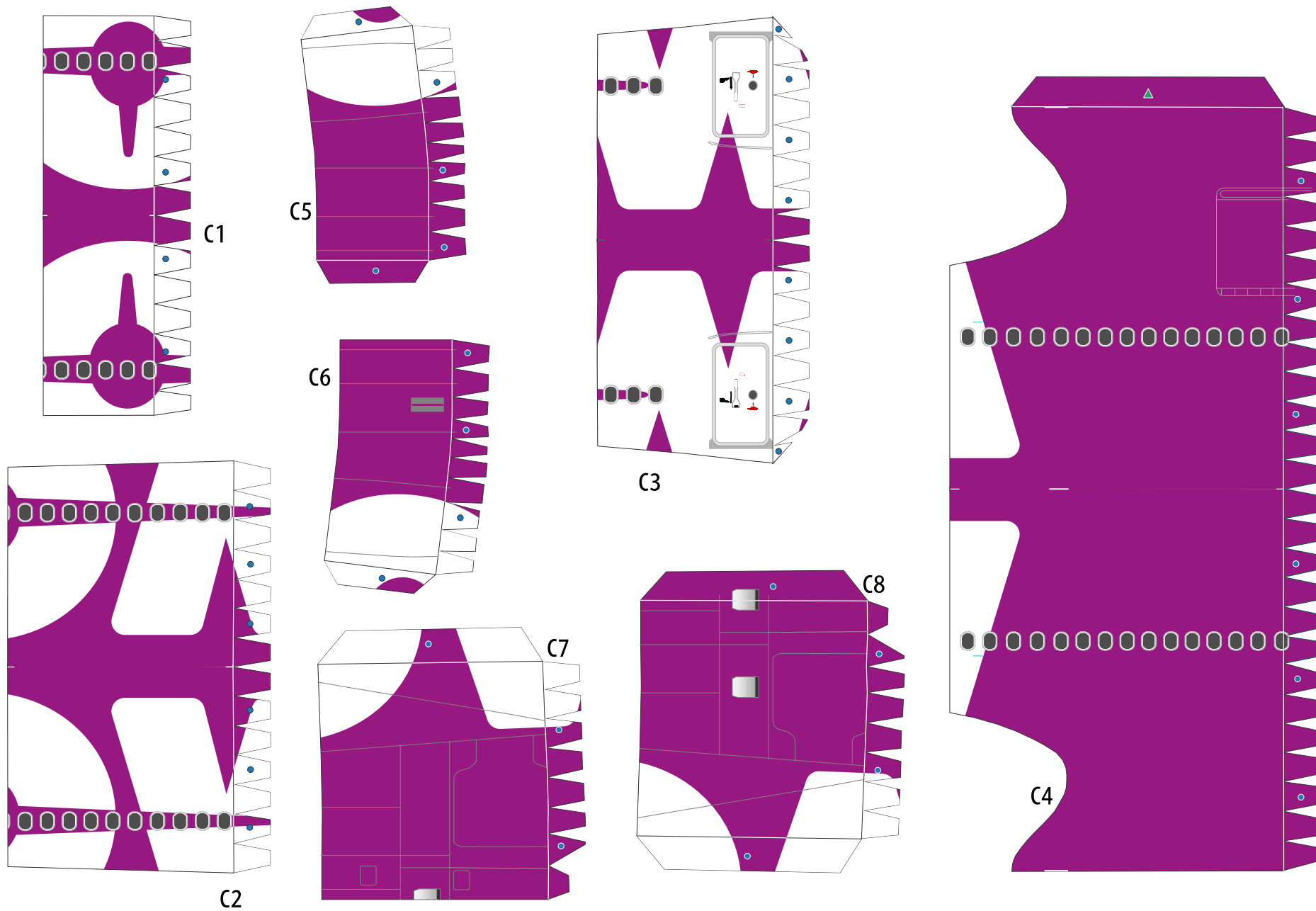
The Airbus A330 is a medium- to long-range wide-body twin-engine jet airliner made by Airbus. Versions of the A330 have a range of 5,000 to 13,430 kilometres (2,700 to 7,250 nautical miles; 3,110 to 8,350 miles) and can accommodate up to 335 passengers in a two-class layout or carry 70 tonnes (154,000 pounds) of cargo..

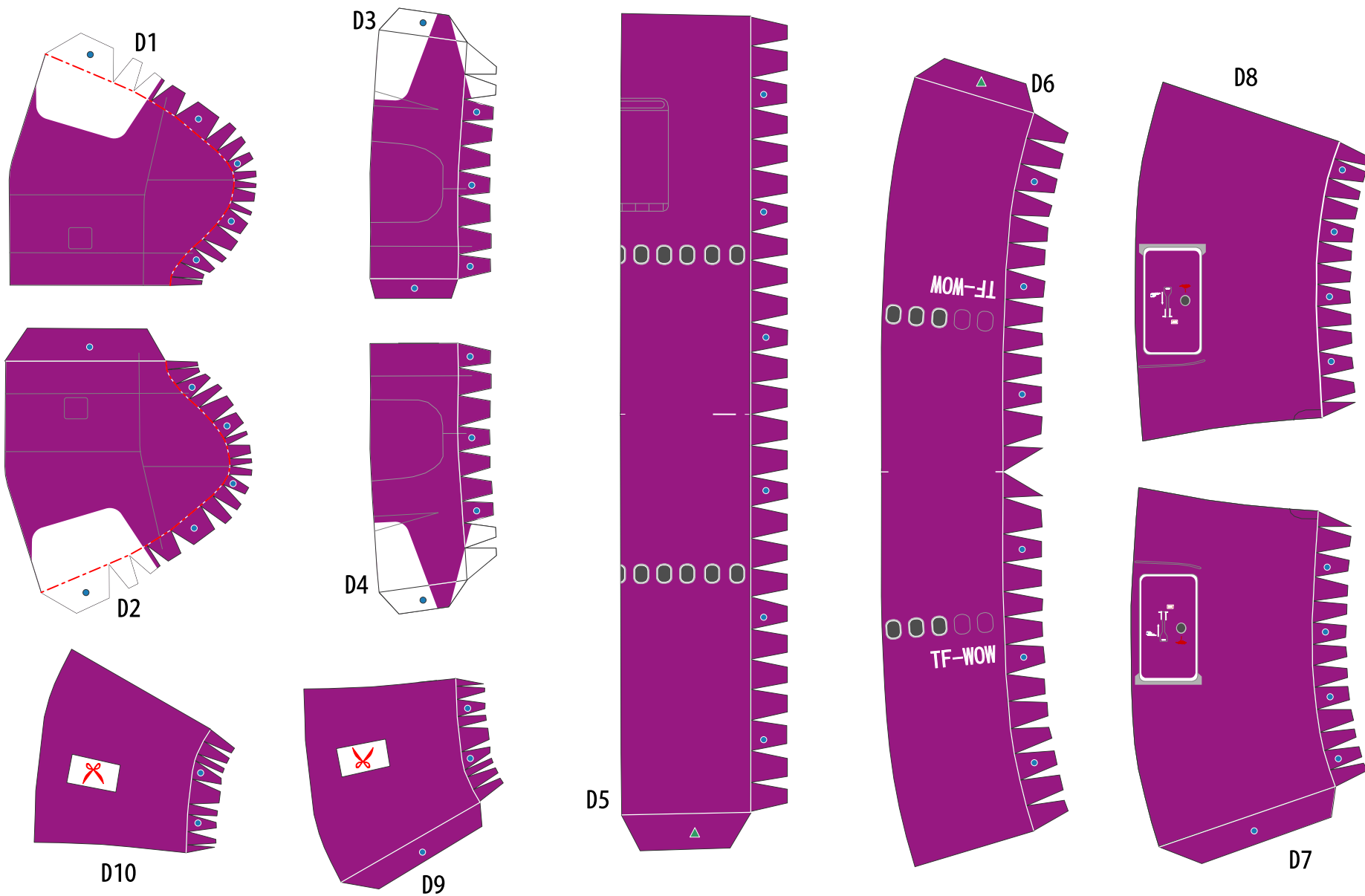
This model was designed for Papercraft and may differ from the original in some respects.

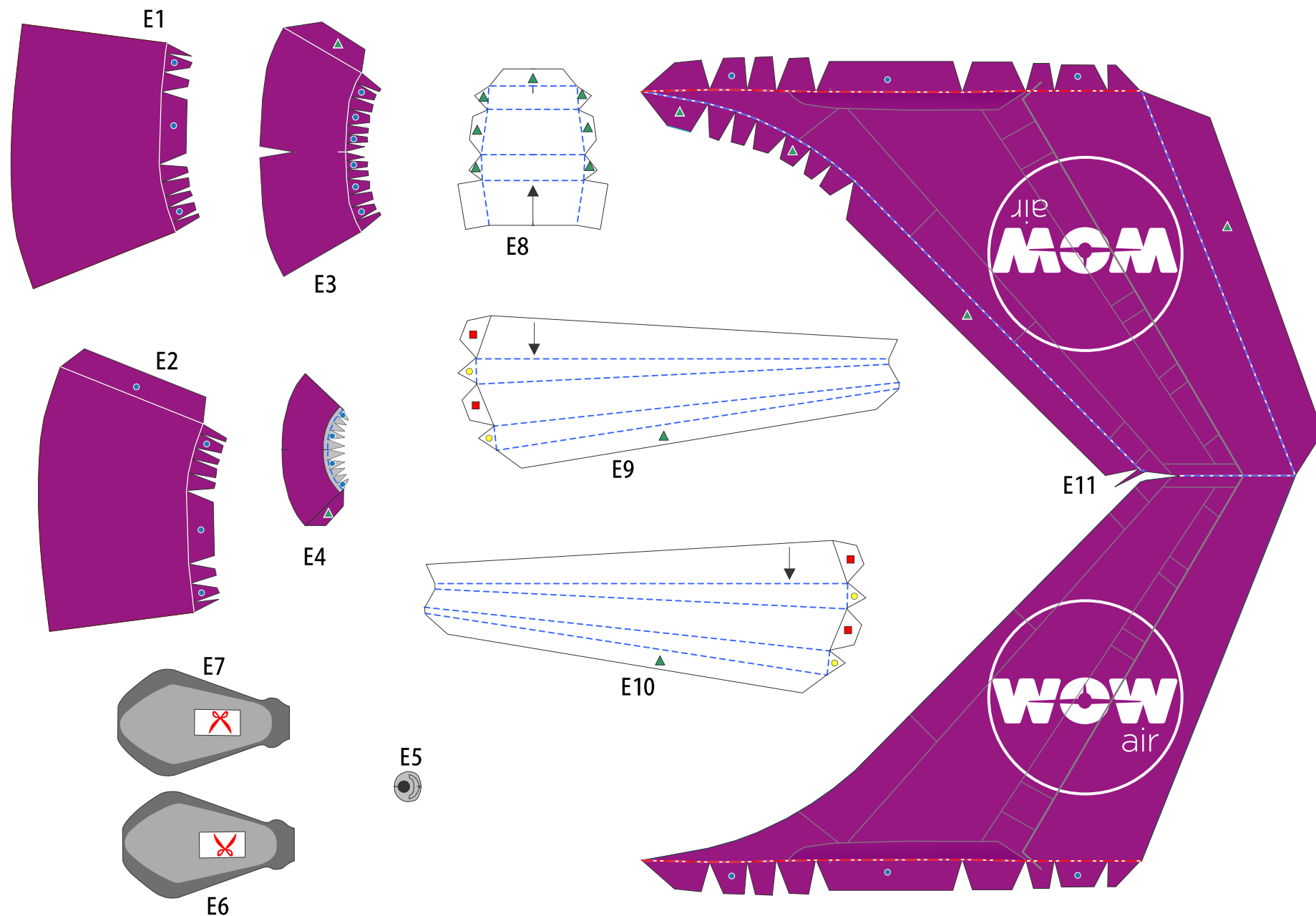
*Build the model by carefully reading the Assembly Instructions, in the parts sheet page order.

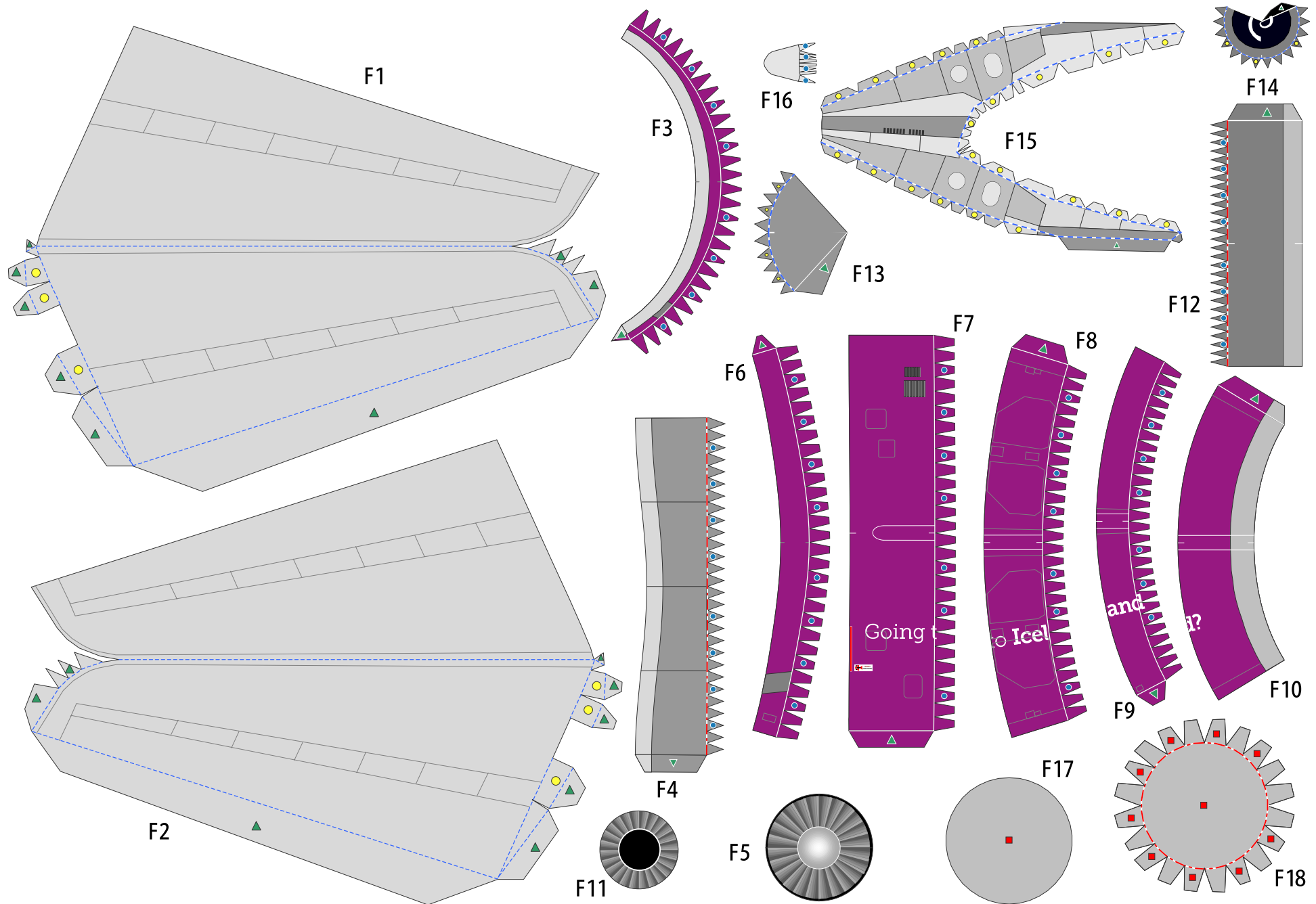


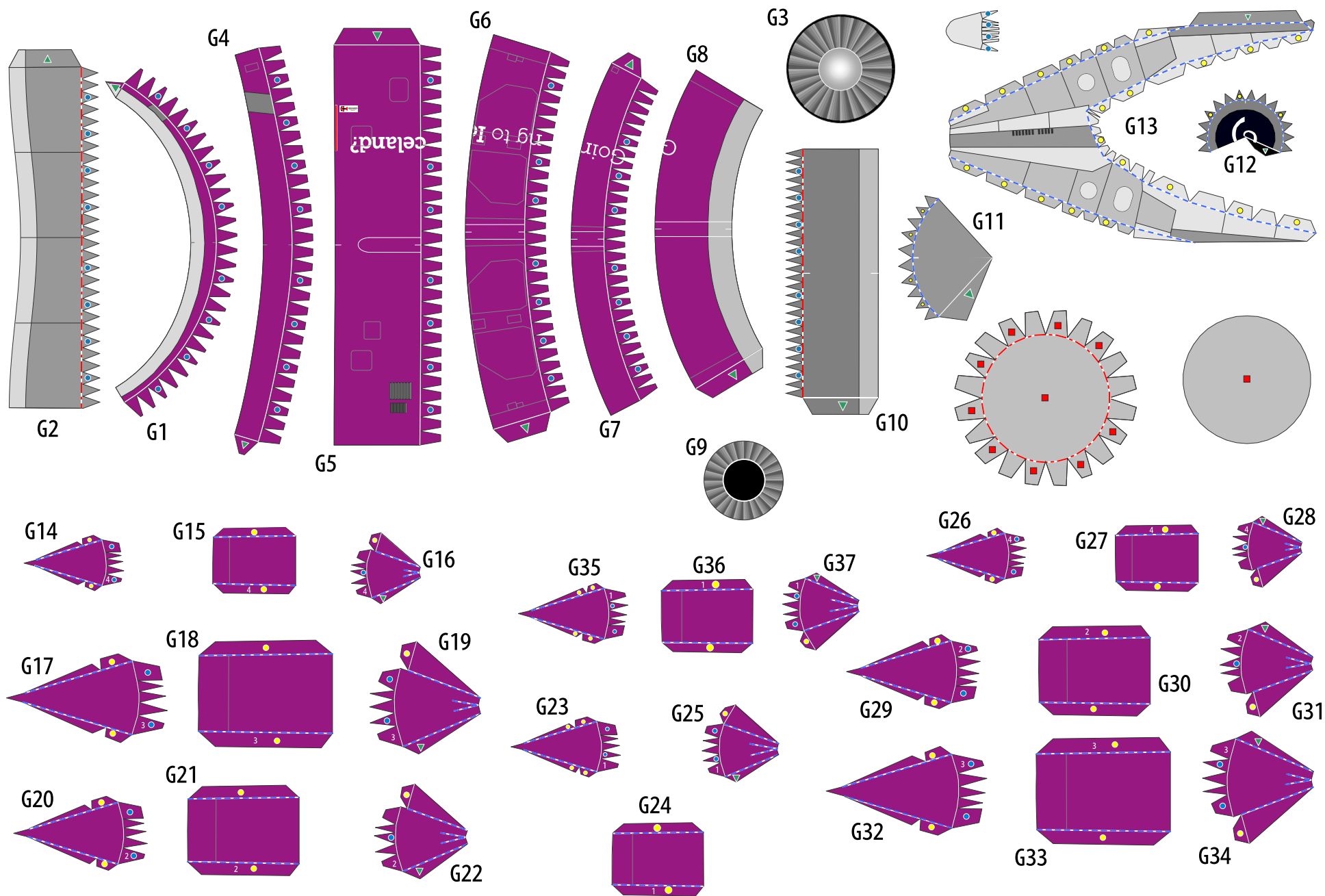


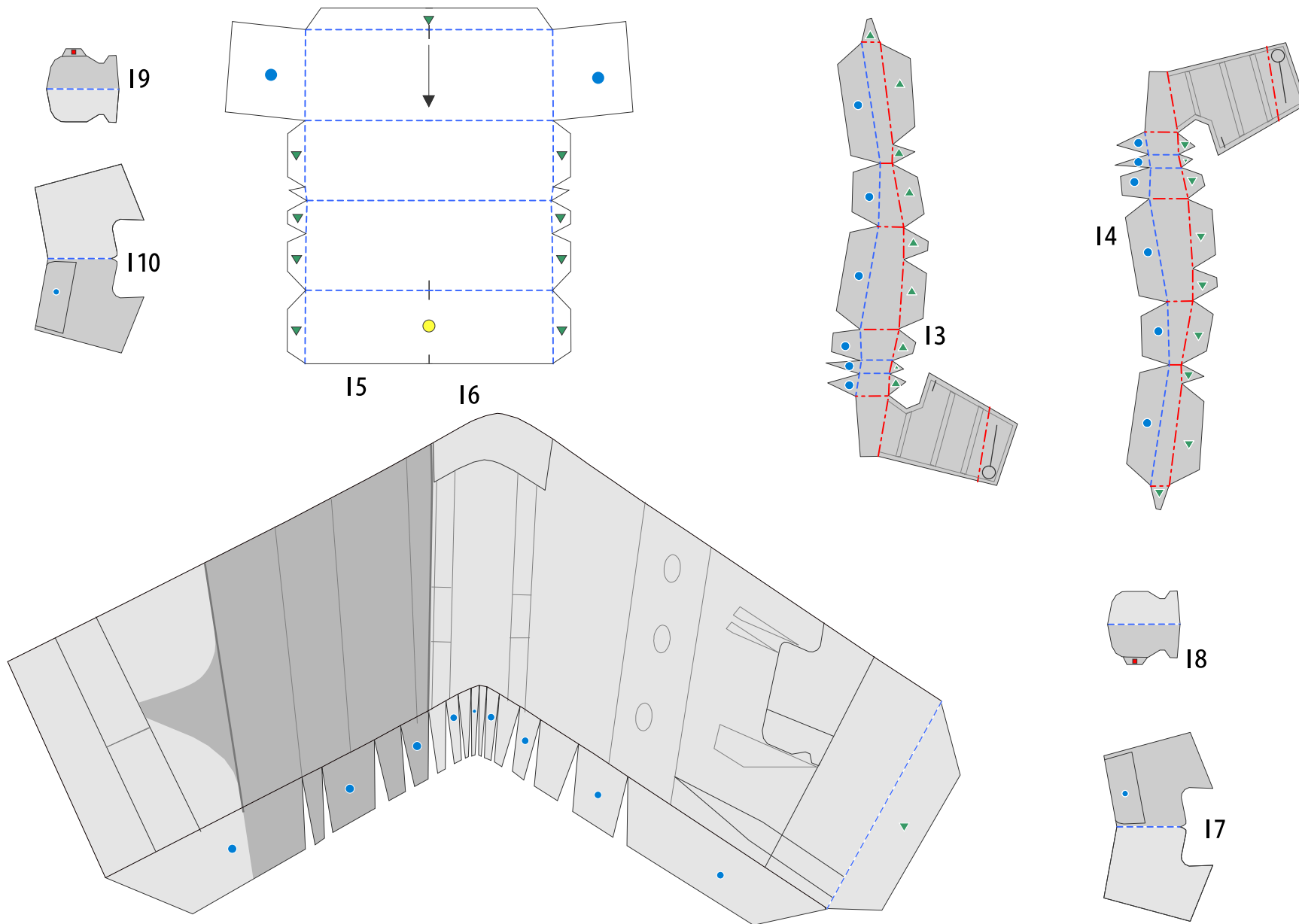


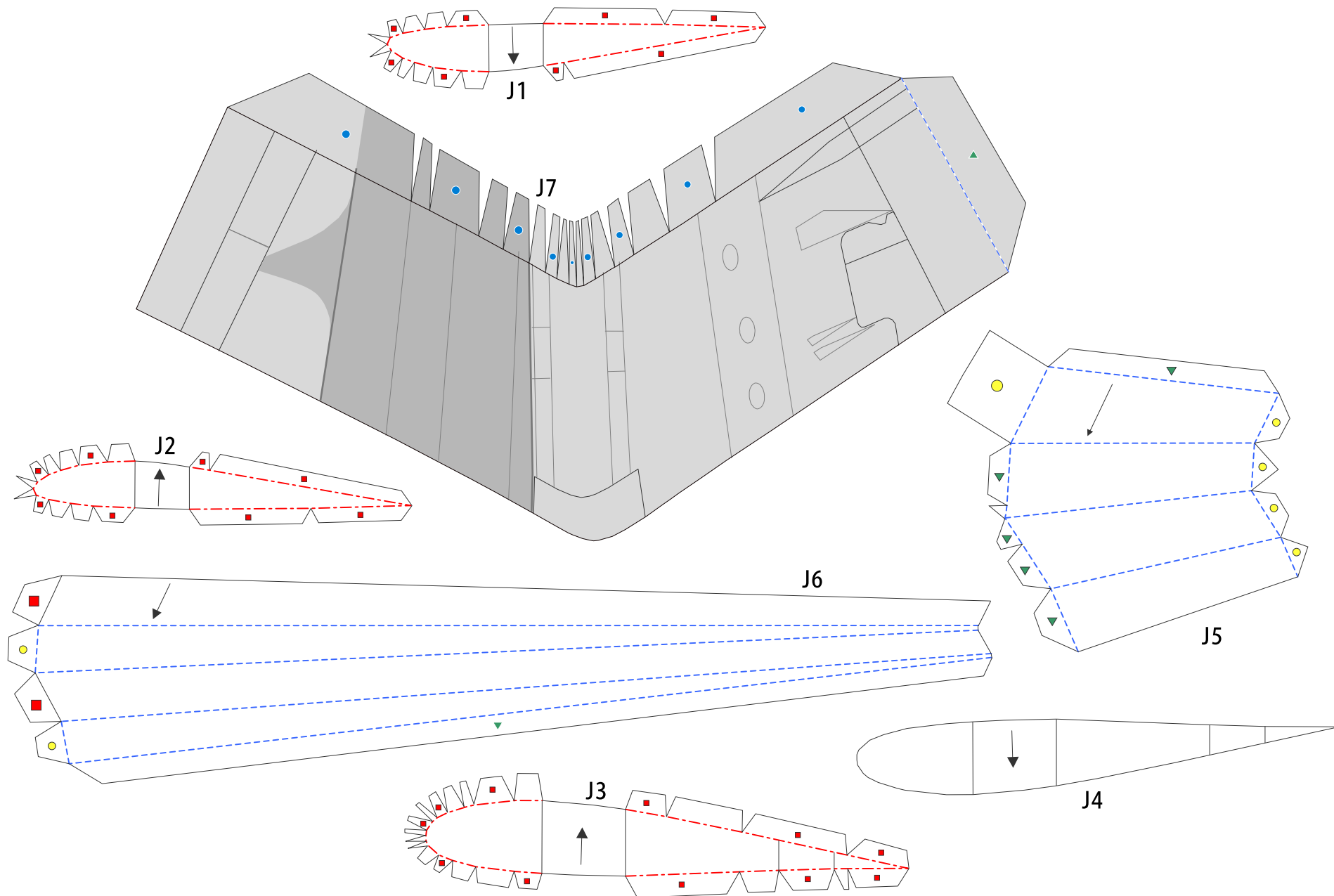


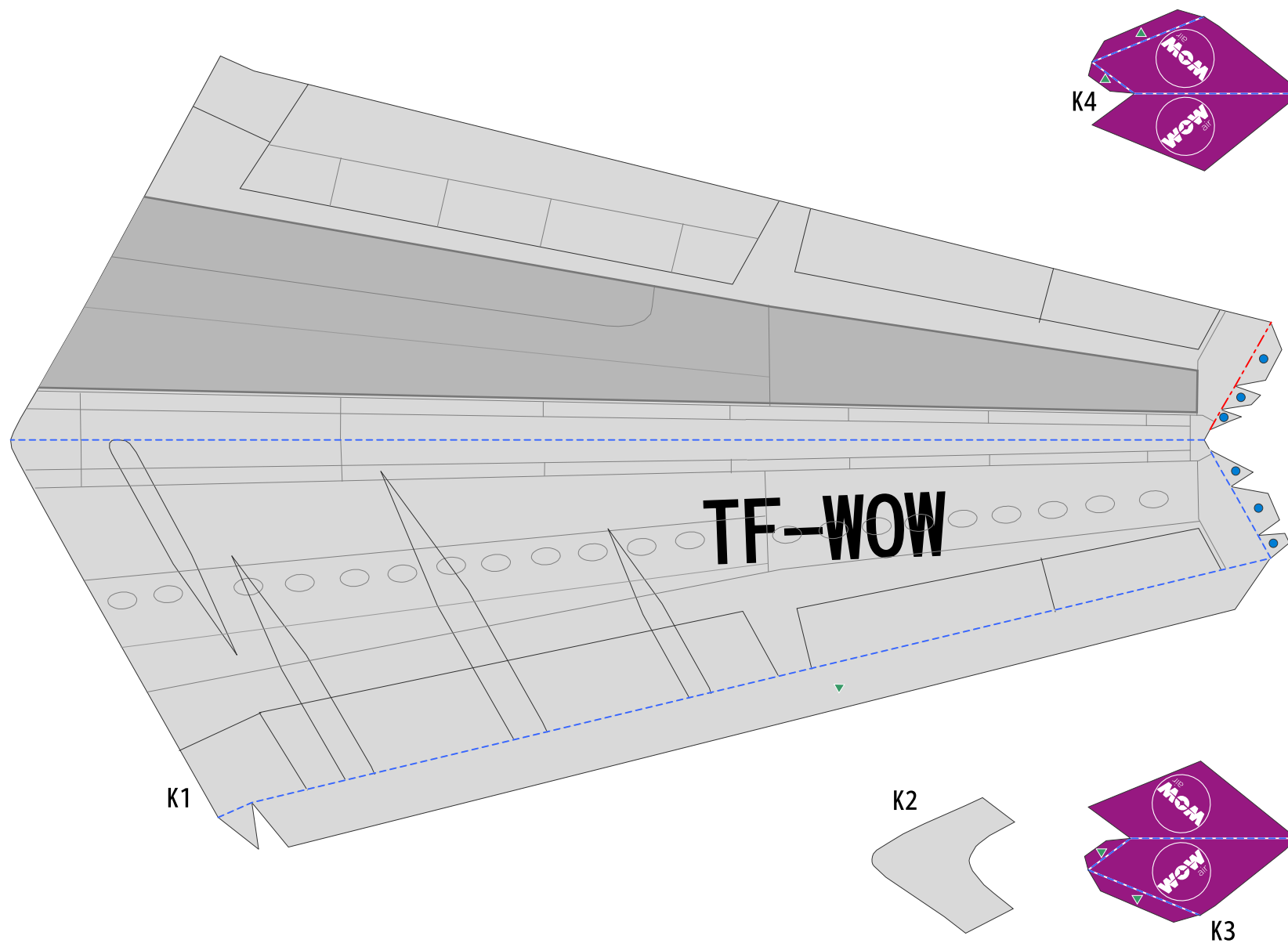


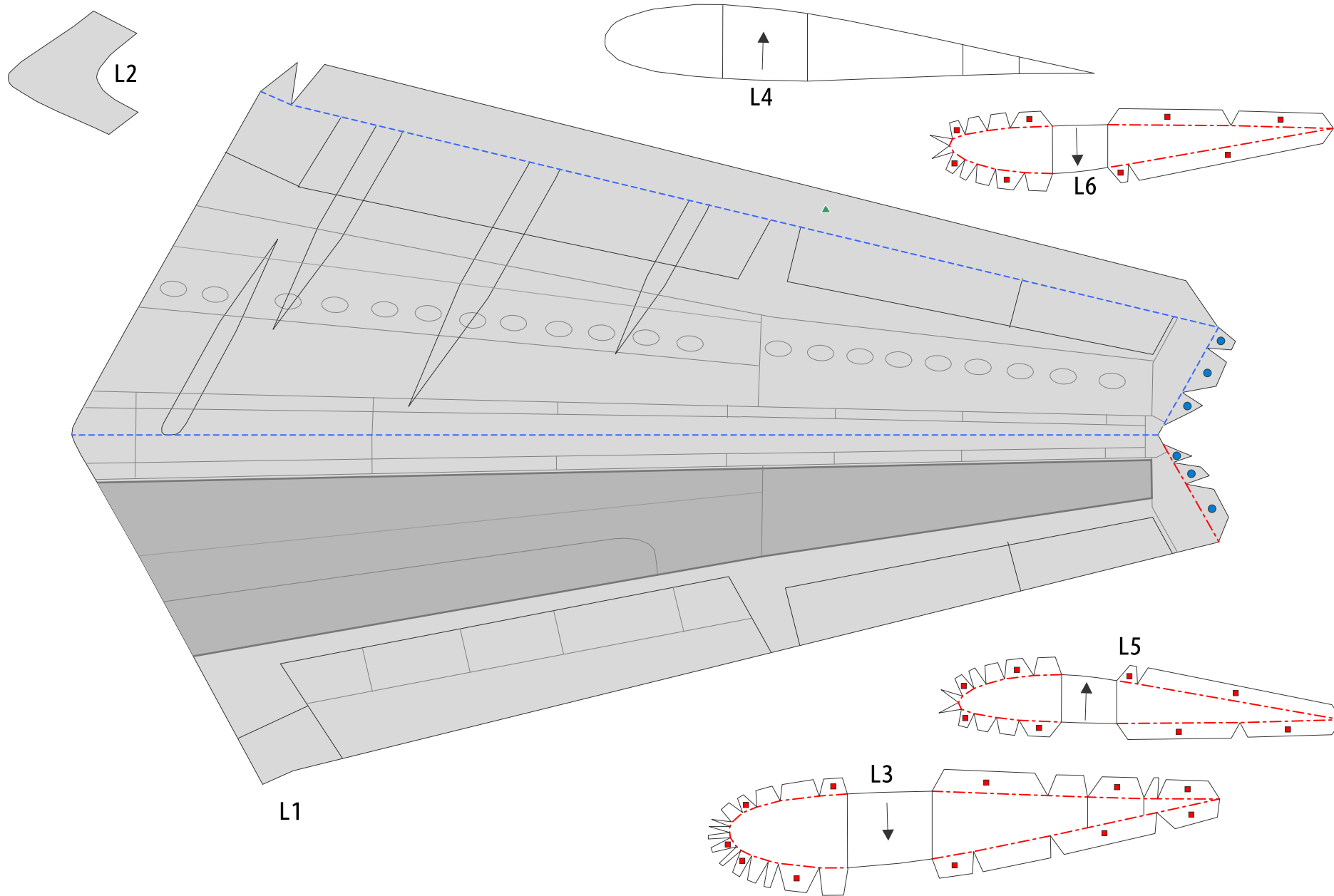


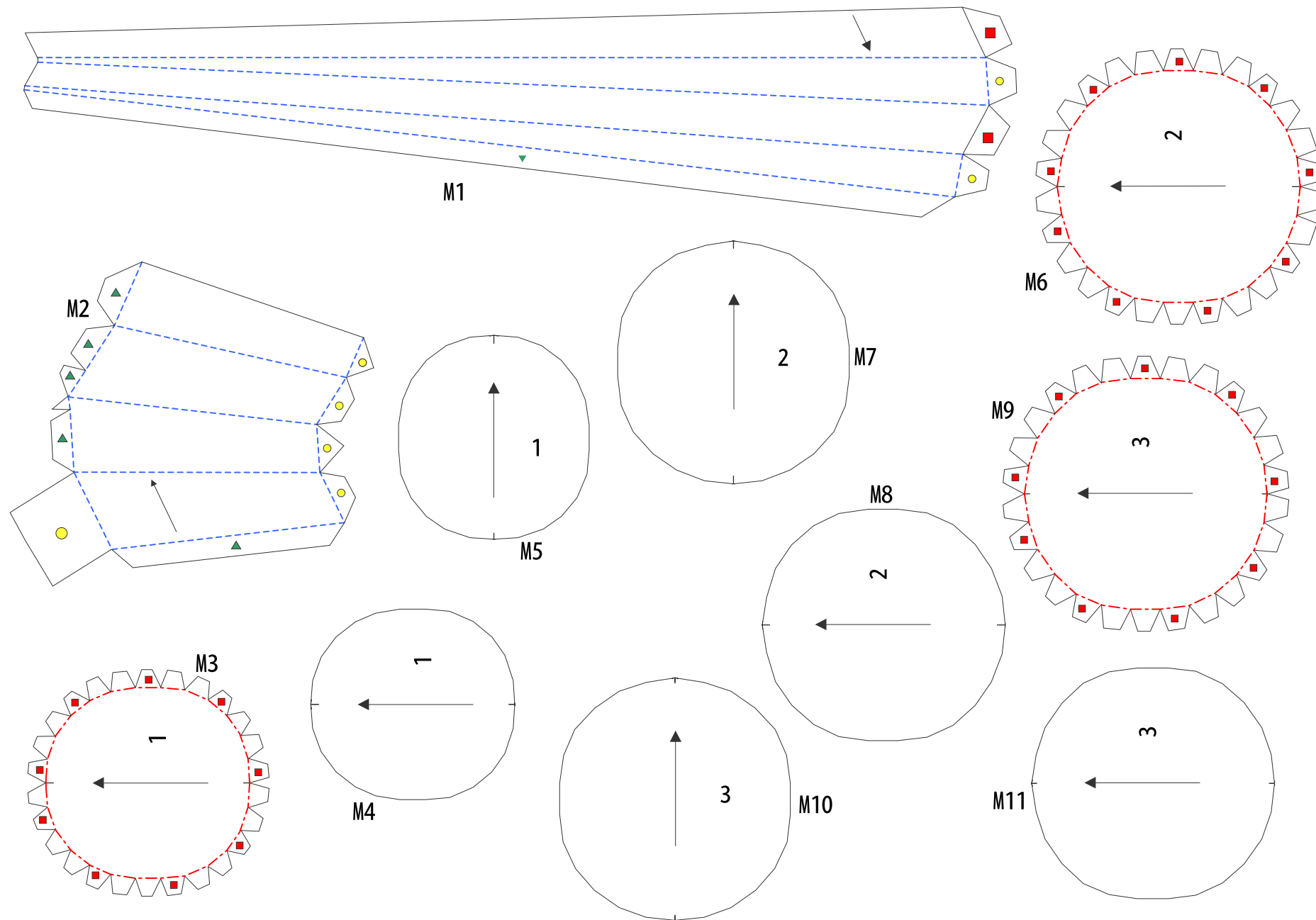


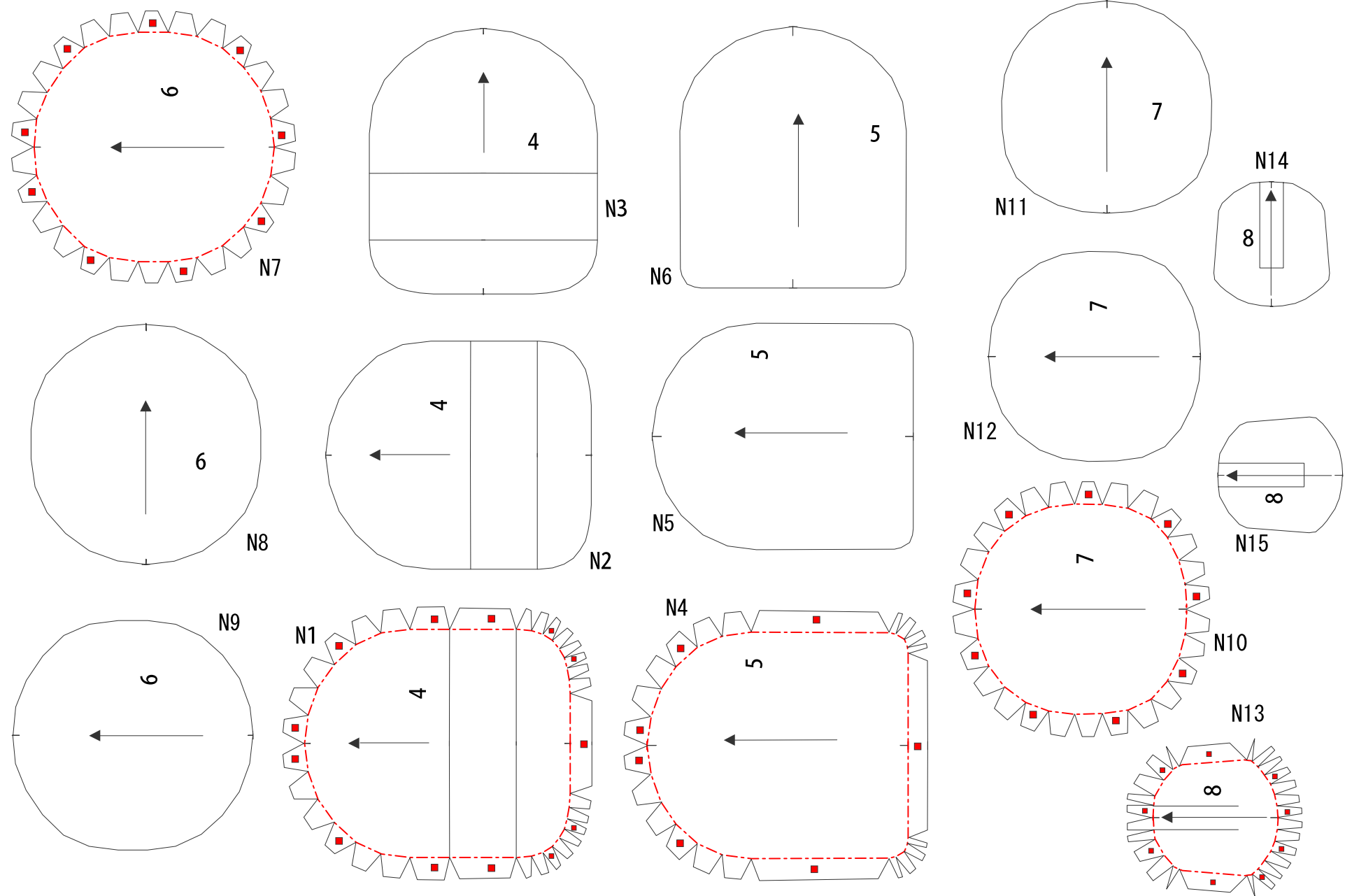


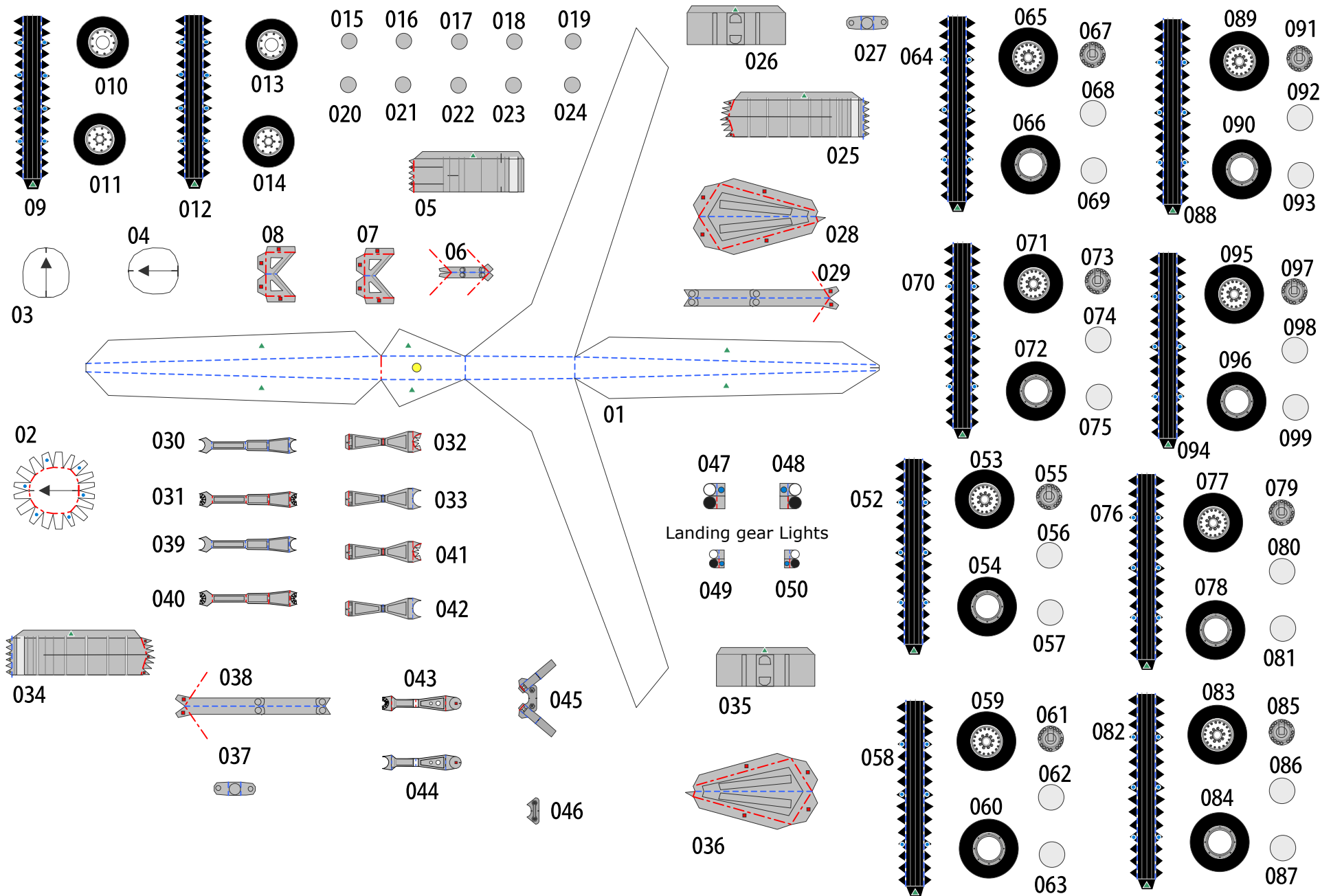


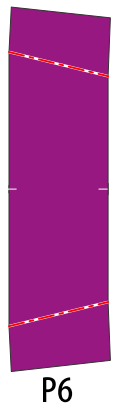
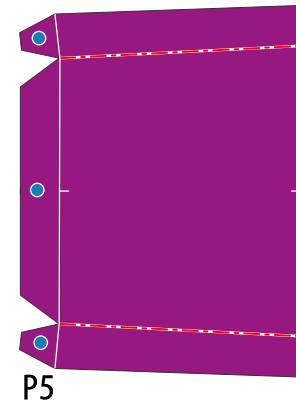
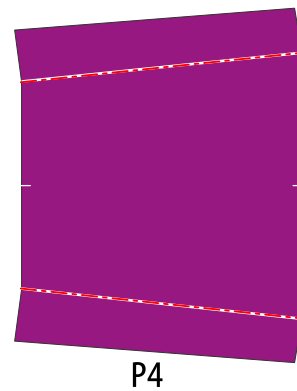
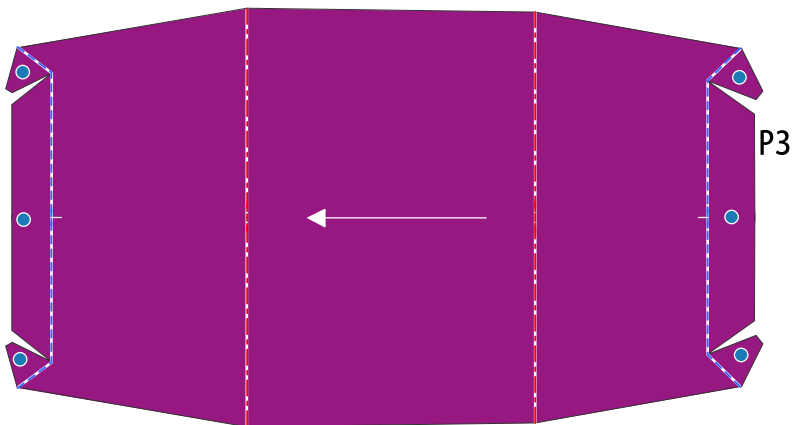
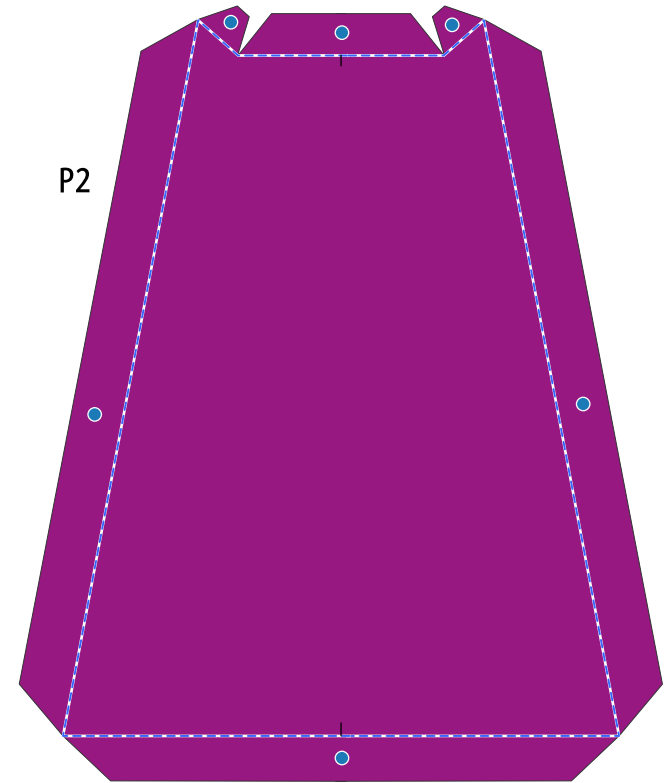


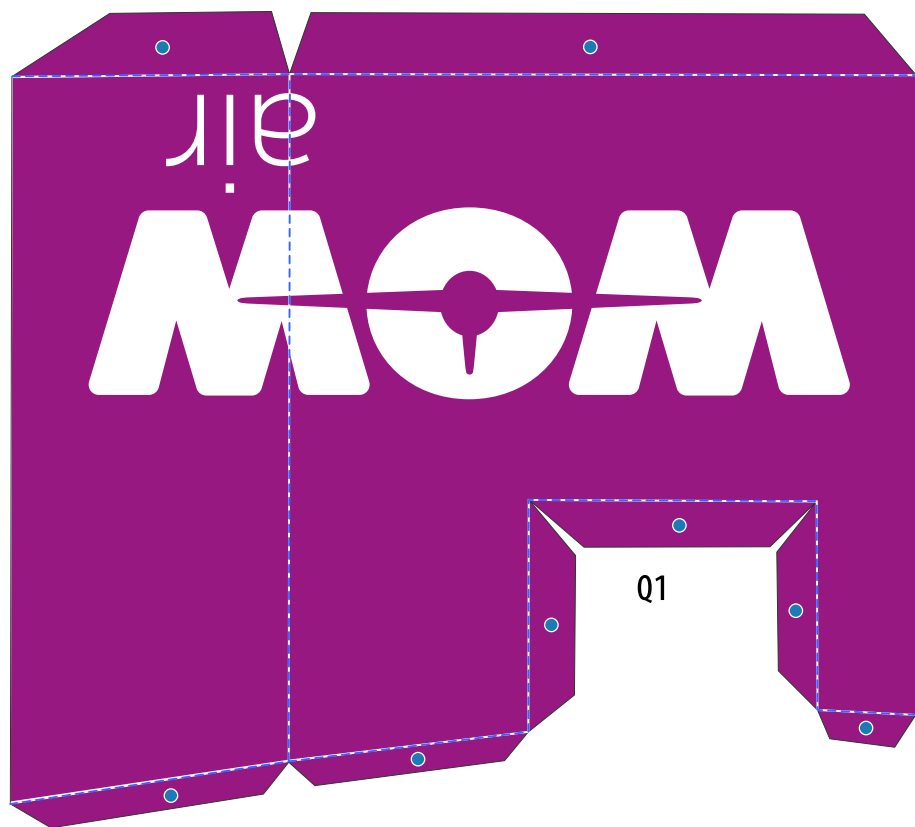






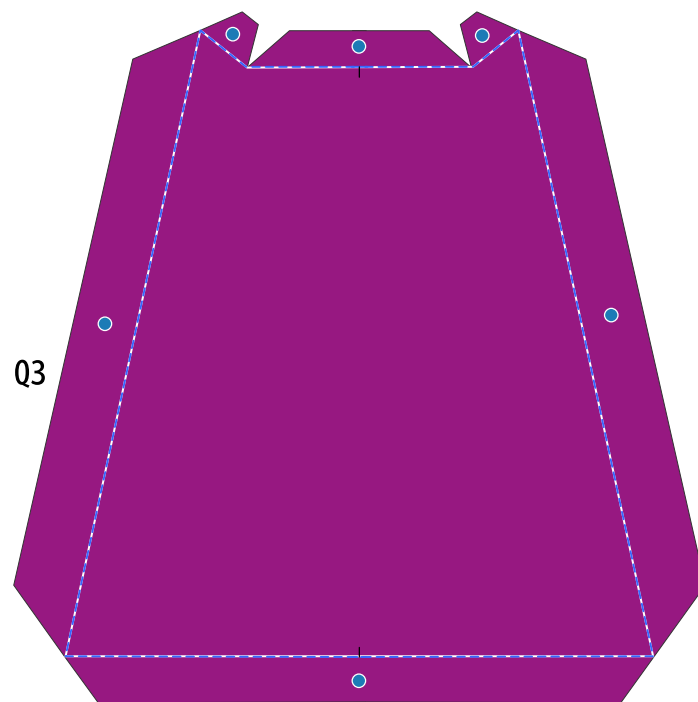






Q1

Q2



Q3



Canon
CREATIVE PARK

<http://www.canon.com/c-park/>

Copyright(C) 2009
P.Model (K.Kiyonaga)

<http://www.pmodel.net/>

Repaint by Mario Solorzano



Do not fit other people with the painted edges.
Doing so could result in injury.
Adults should make sure that children observe this caution.