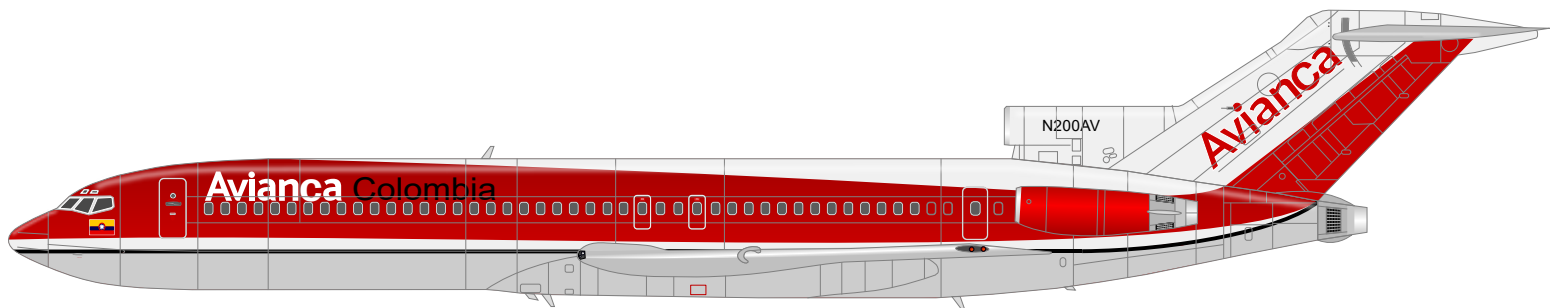


CITYCRAFT

PaperModels & More

Avianca

La Aerolinea de Colombia



BOEING 727-200

Avianca Boeing 727-2Q9

053

Avianca S.A. (acronym in Spanish for Aerovías del Continente Americano S.A., "Airways of the American Continent") is a Colombian airline. It has been the flag carrier of Colombia since 5 December 1919, when it was initially registered under the name SCADTA. It is headquartered in Bogotá, D.C. with its main hub at El Dorado International Airport. Avianca is the flagship of a group of eight Latin American airlines, whose operations are combined to function as one airline using a codesharing system. Avianca is the largest airline in Colombia and second largest in Latin America, after LATAM of Chile. Avianca and its subsidiaries have the most extensive network of destinations in Latin America. Prior to the merger with TACA in 2010, it was wholly owned by Synergy Group S.A., a South American holding company established by Germán Efromovich and specialising in air transport.

The Boeing 727 is an American narrow-body airliner produced by Boeing Commercial Airplanes. After the heavy 707 quad-jet was introduced in 1958, Boeing addressed the demand for shorter flight lengths from smaller airports. On December 5, 1960, the 727 was launched with 40 orders each from United Airlines and Eastern Air Lines. The first 727-100 rolled out November 27, 1962, first flew on February 9, 1963, and entered service with Eastern on February 1, 1964.

A stretched version of the 727-100, the -200 is 20 feet (6.1 m) longer (153 feet 2 inches;46.69 m) than the -100 (133 feet 2 inches;40.59 m). A 10-ft (3-m) fuselage section ("plug") was added in front of the wings and another 10-ft fuselage section was added behind them. The wing span and height remain the same on both the -100 and -200 (108 and 34 feet (33 and 10 m), respectively)

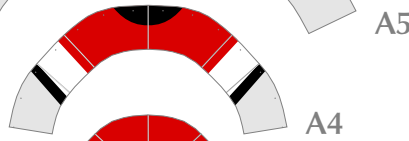
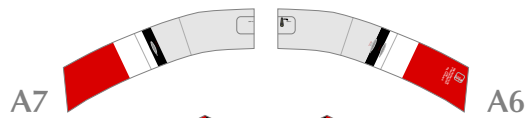
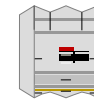
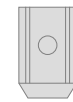
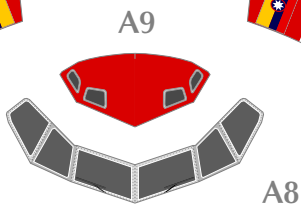
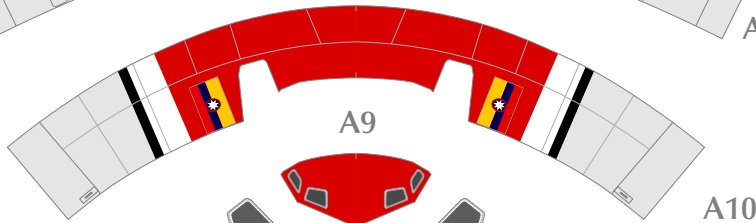
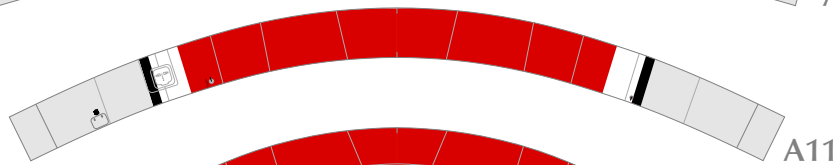
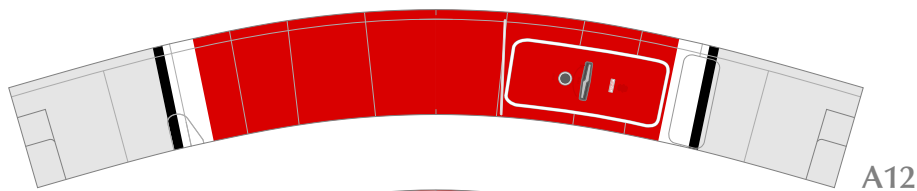
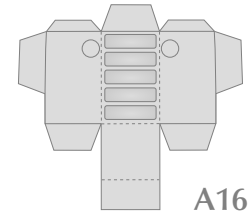
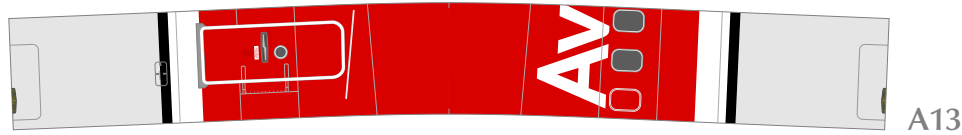
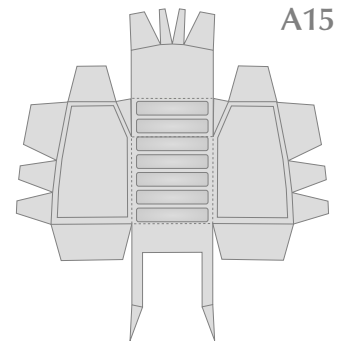
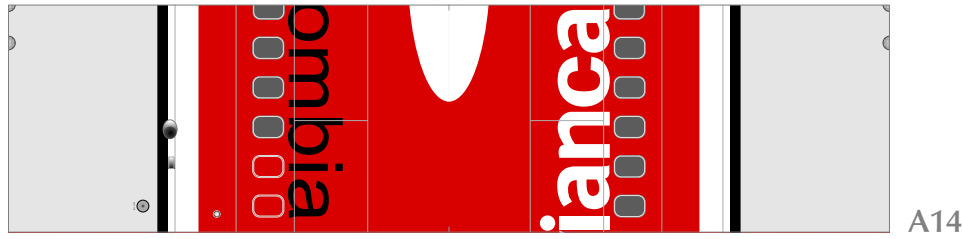
Scale: 1:100
Length: (467mm)
Width: (329mm)
Part 272 (13 pages)

Attach the parts in order.
A1 - K6
You can choose to make either a groud style (With Wheels)
or an in-flight style (without wheels) aircraft.



- *This model is designed for papercraft and is different in several ways from the real plane
- *Build the model by carefully reading the Assembly Instructions.
- *The final size of the model may vary slightly depending on the configuration of your printer

Avianca
La Aerolinea de Colombia



A28



A29

A30



A17L

A28



A29

A30



A17R



B13



B14



B15



B16



B17



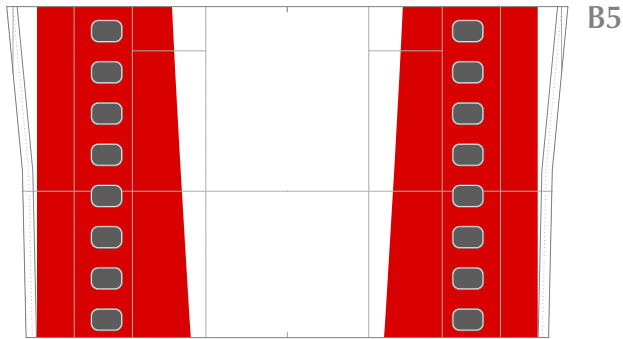
B18



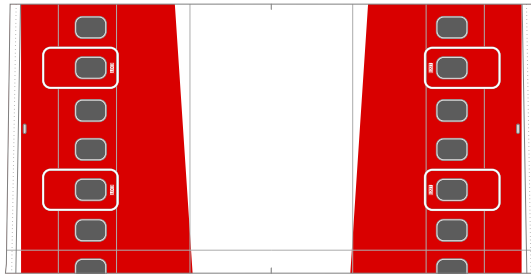
B19



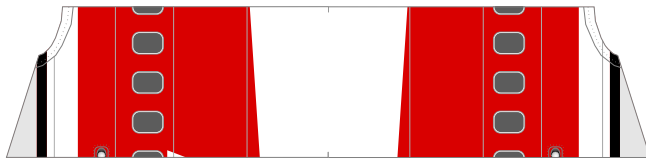
B20



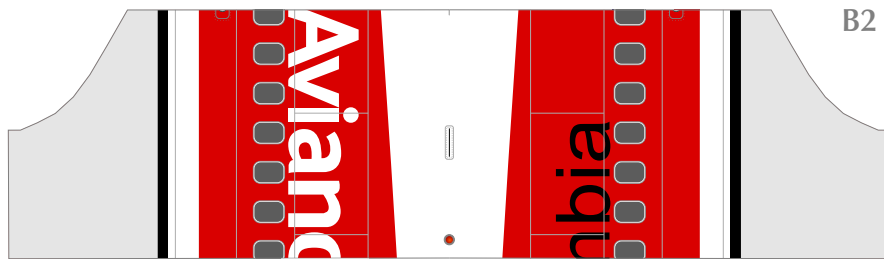
B5



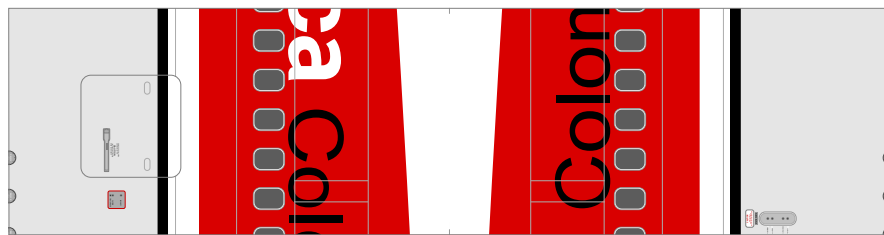
B4



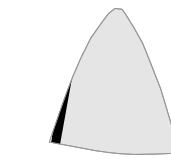
B3



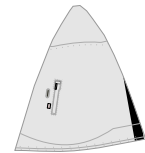
B2



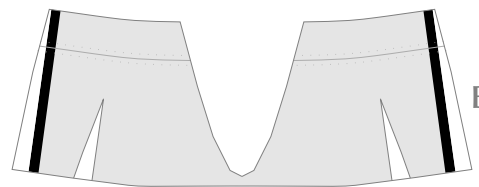
B1



B11



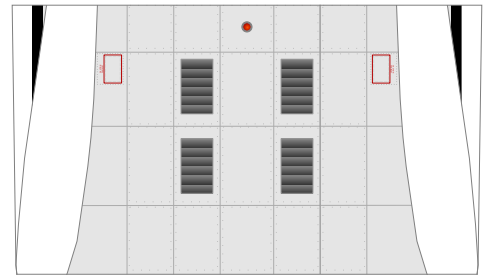
B12



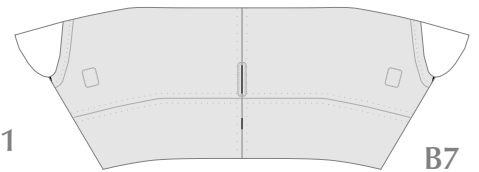
B10



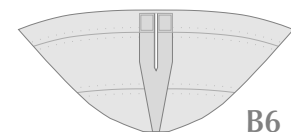
B9



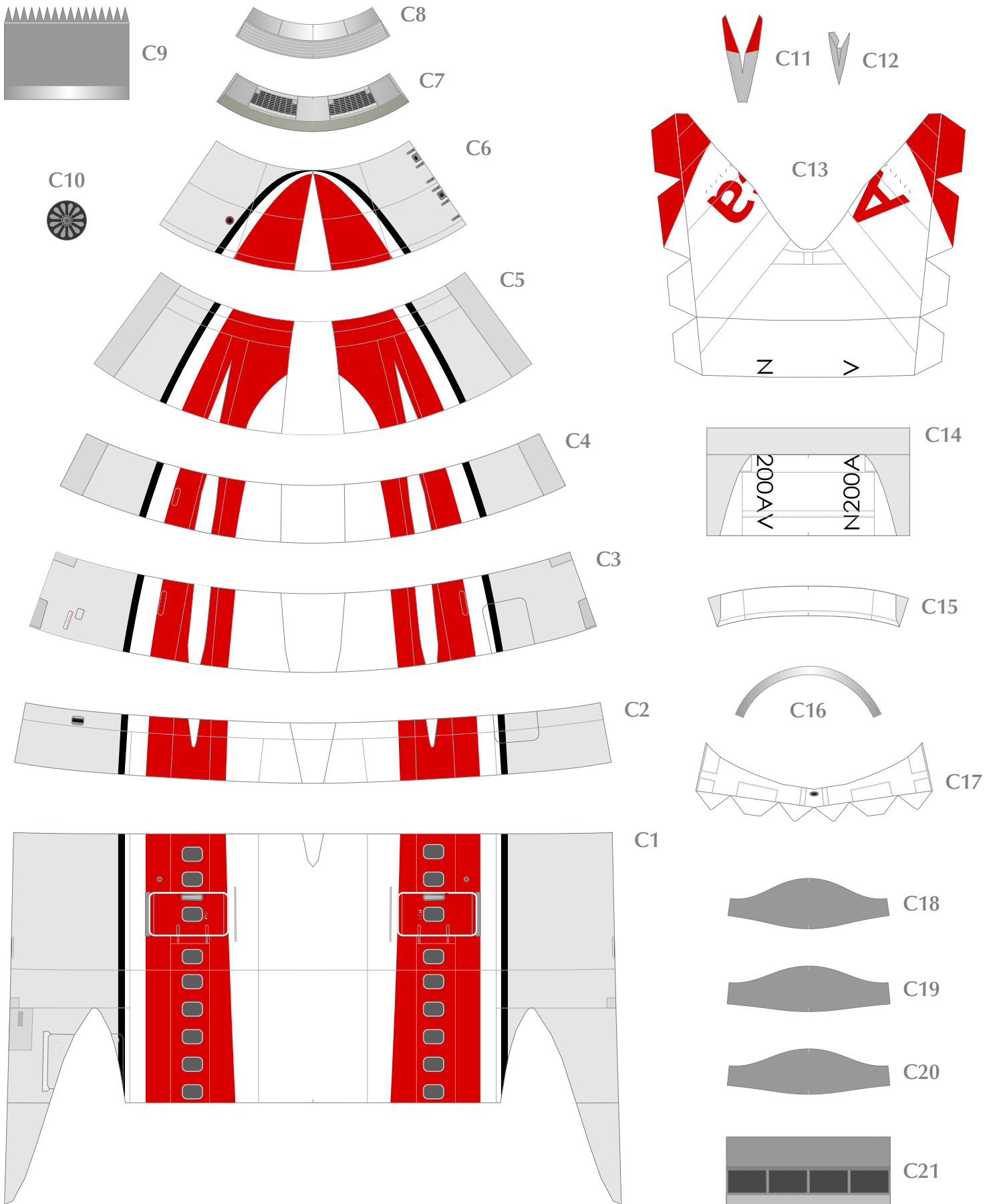
B8

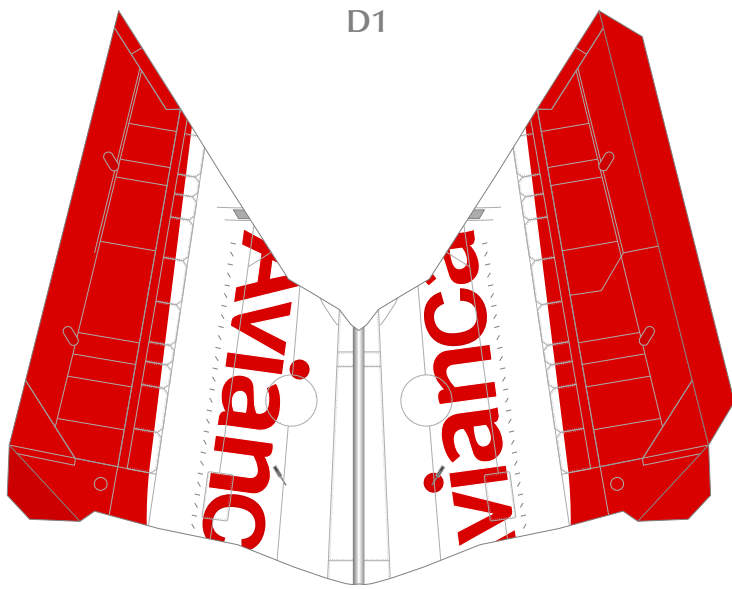


B7

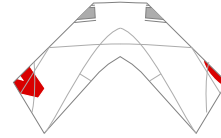


B6

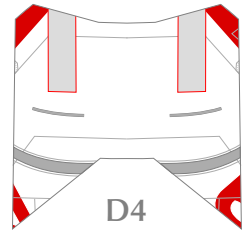




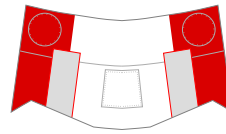
D2



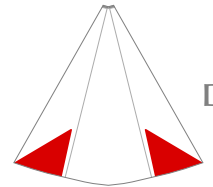
D3



D4



D5



D6

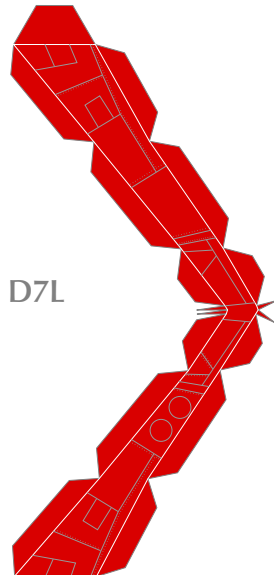


D8L

D9L



D10L



D7L

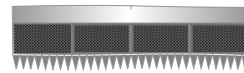


D8R

D9R



D10R



D11R



D12R



D13R



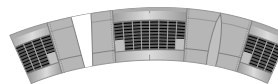
D14R



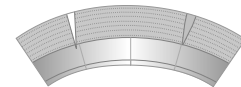
D15R



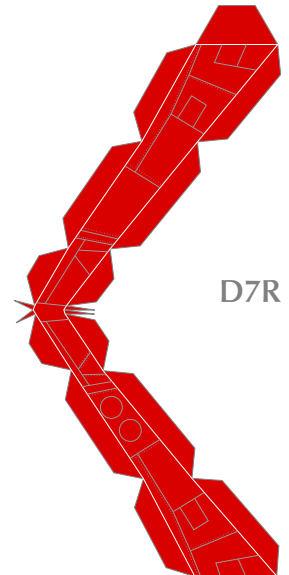
D16R



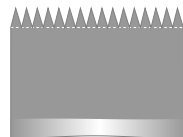
D17R



D18R



D7R



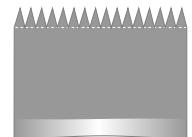
D19L



D20L



D21L



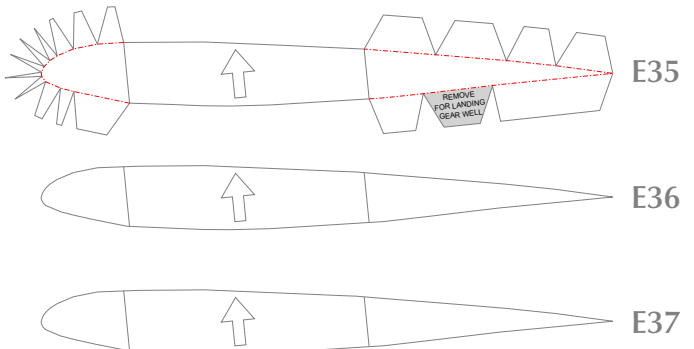
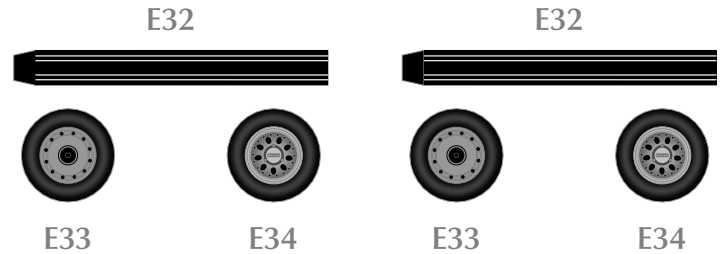
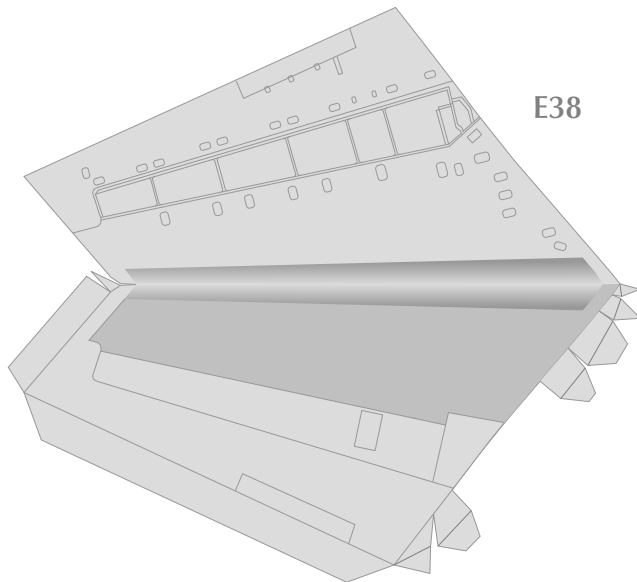
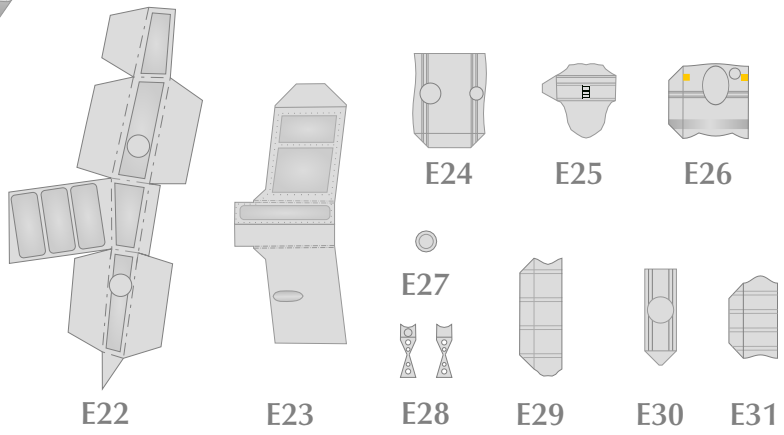
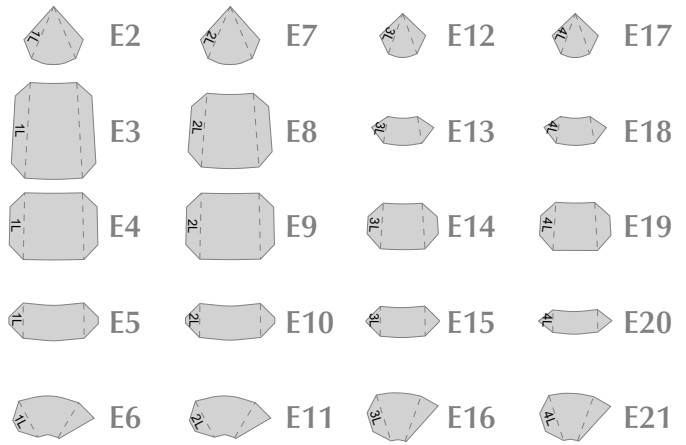
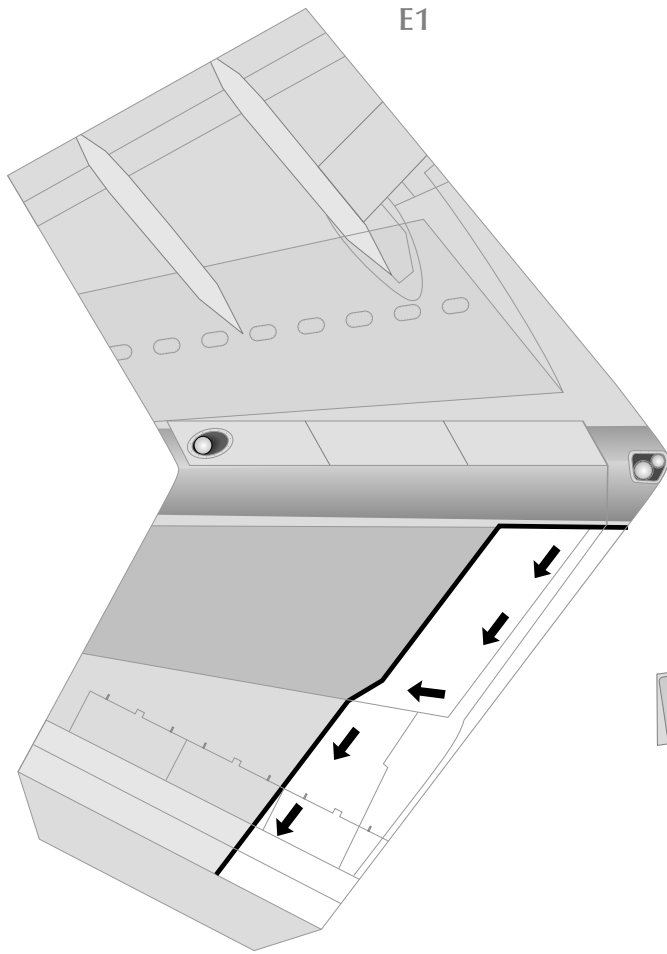
D19R

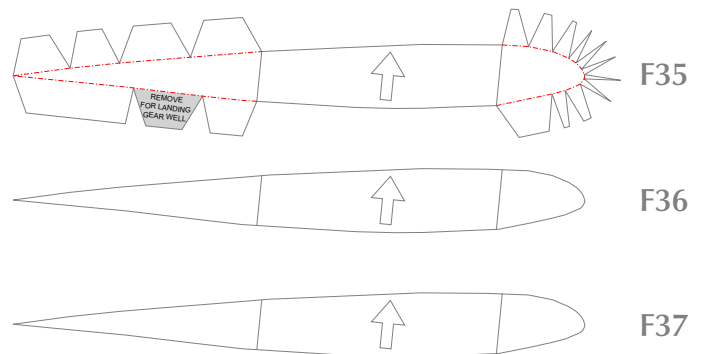
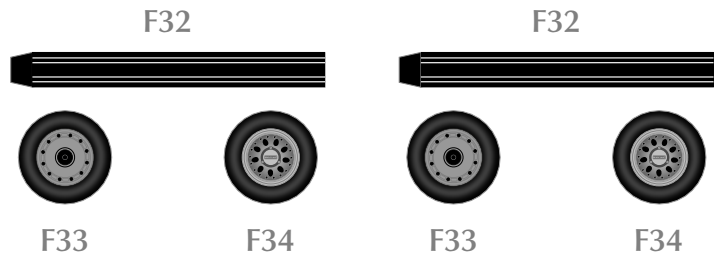
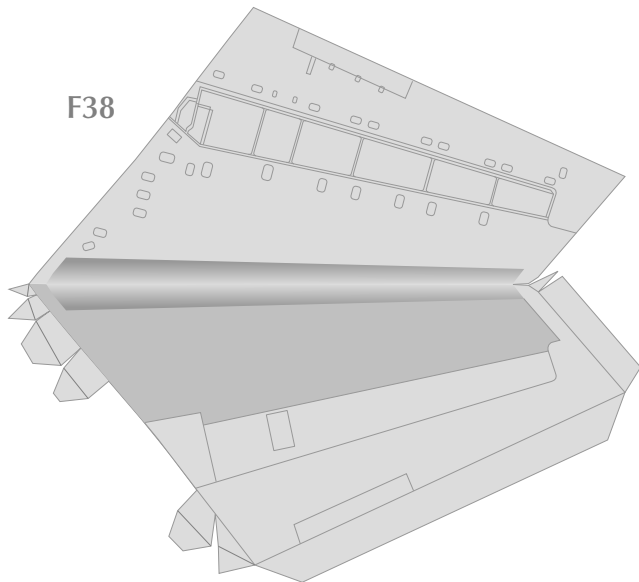
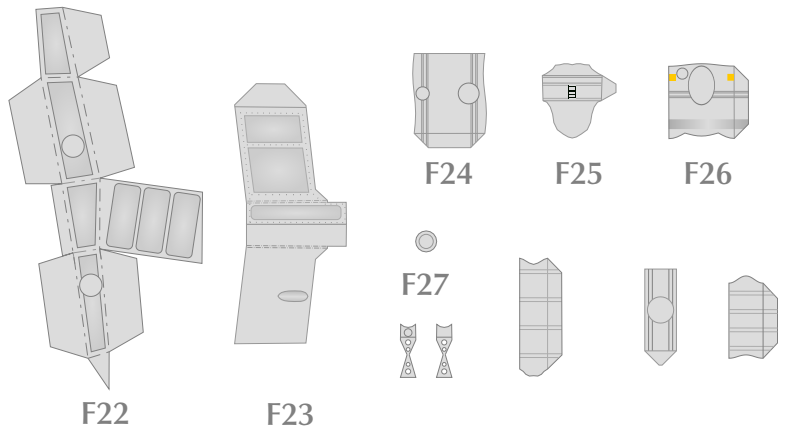
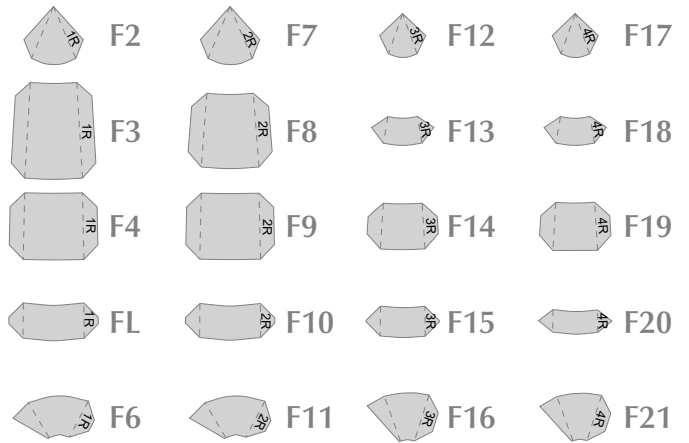
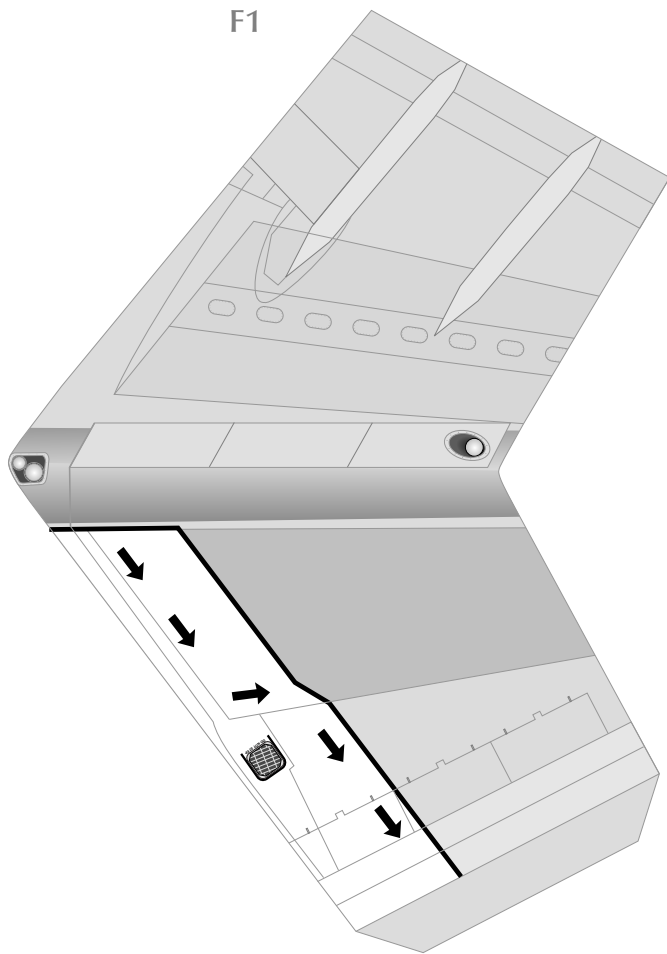


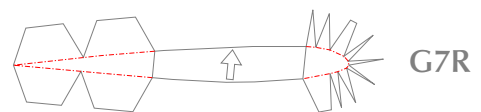
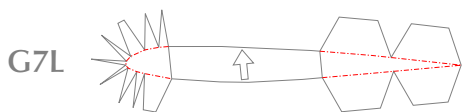
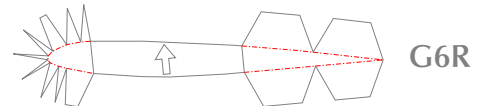
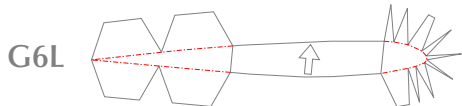
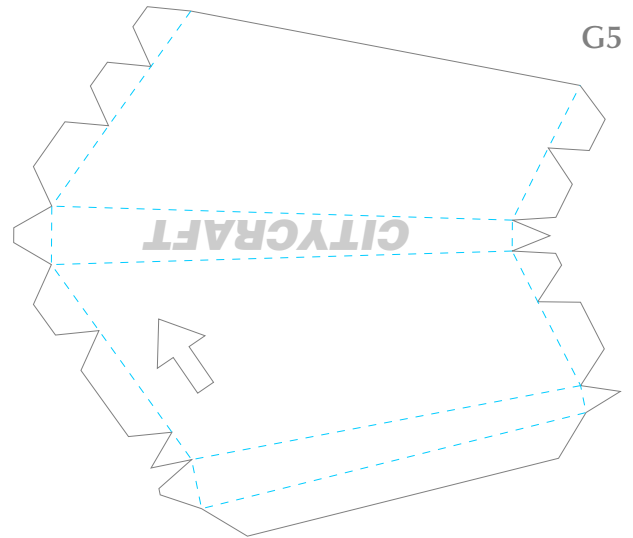
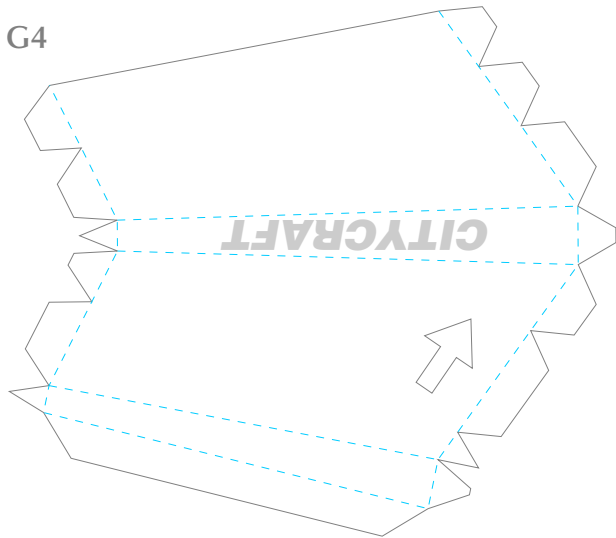
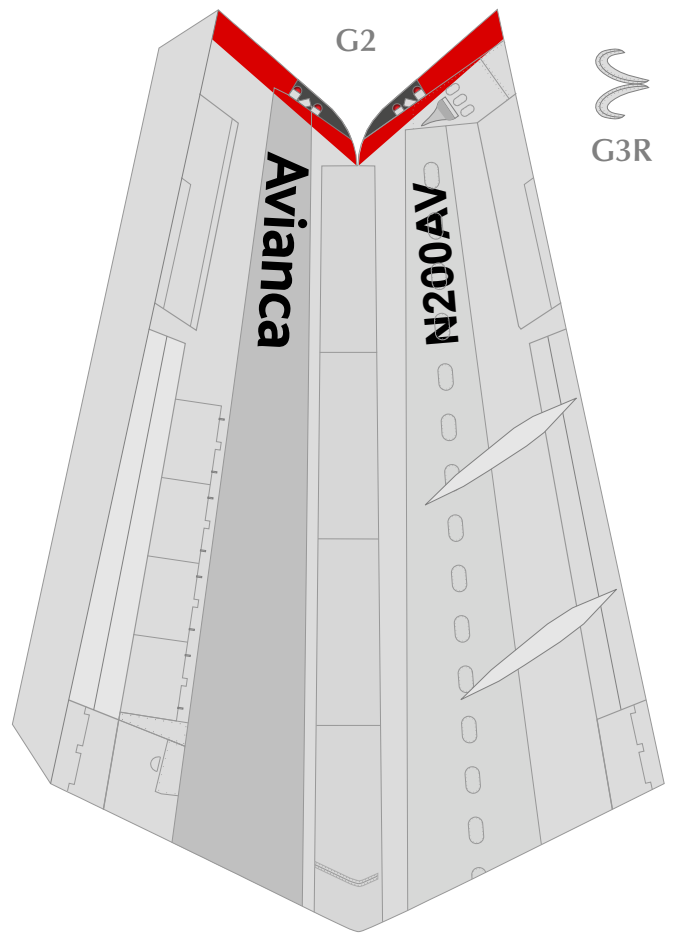
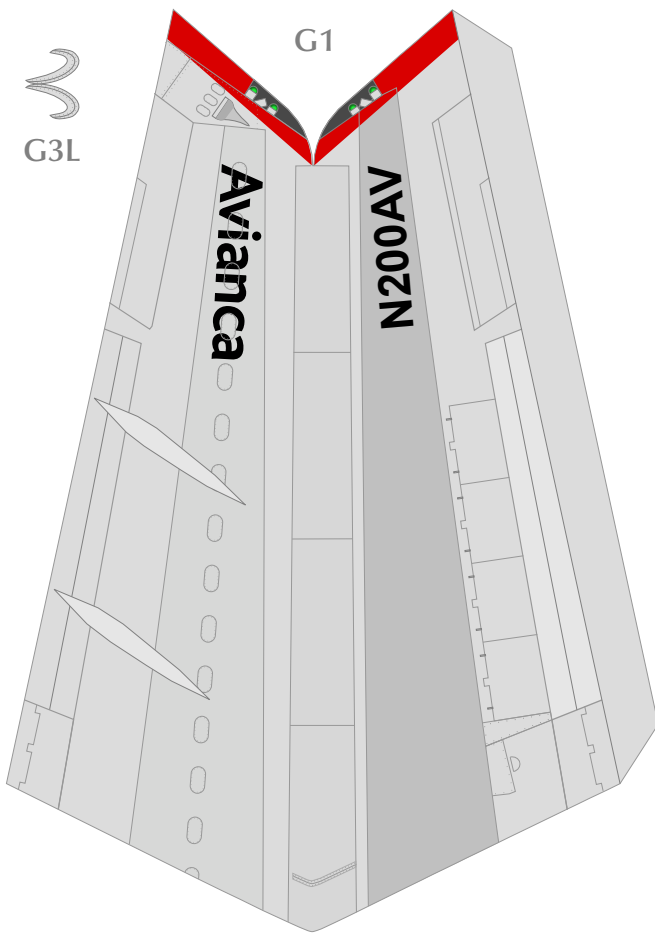
D20R

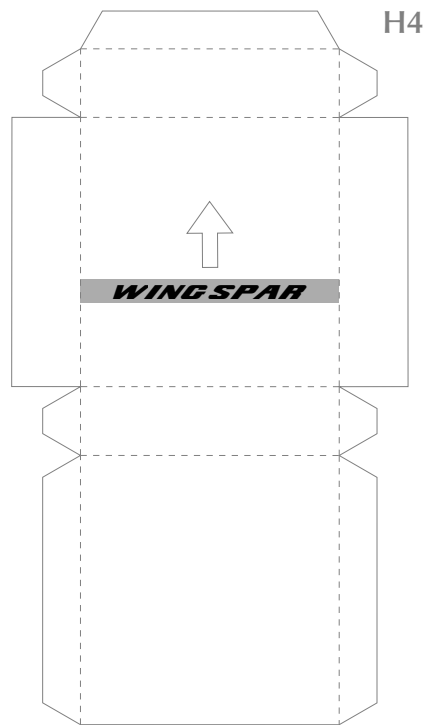
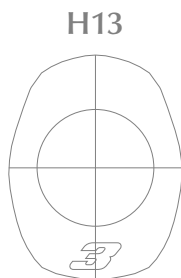
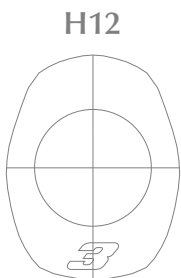
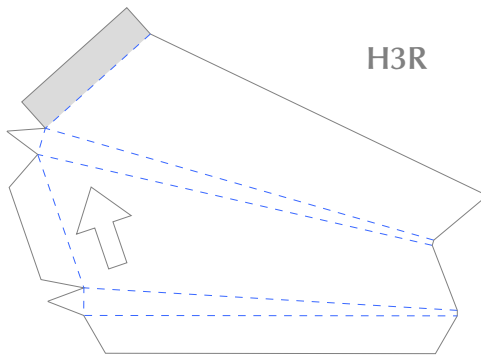
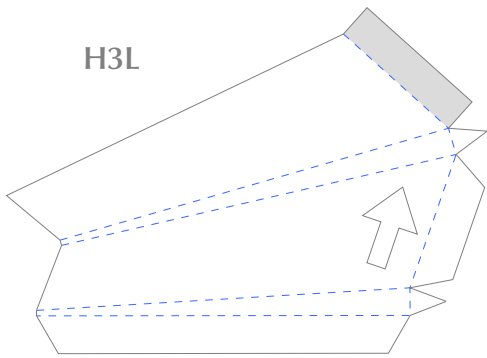
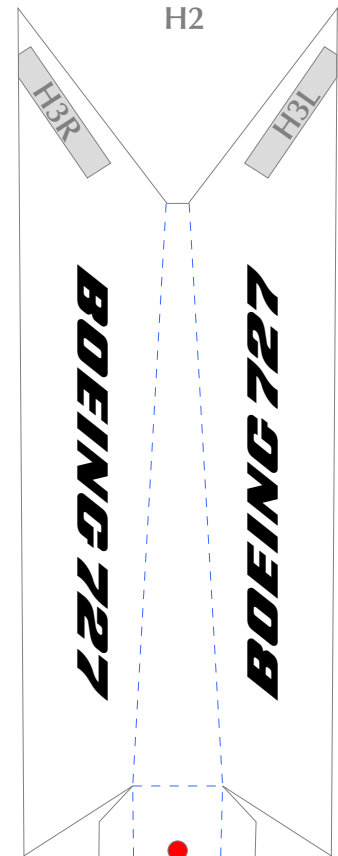
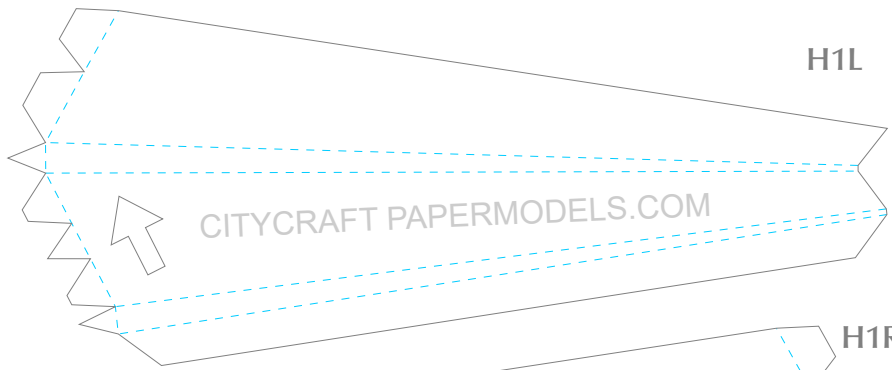


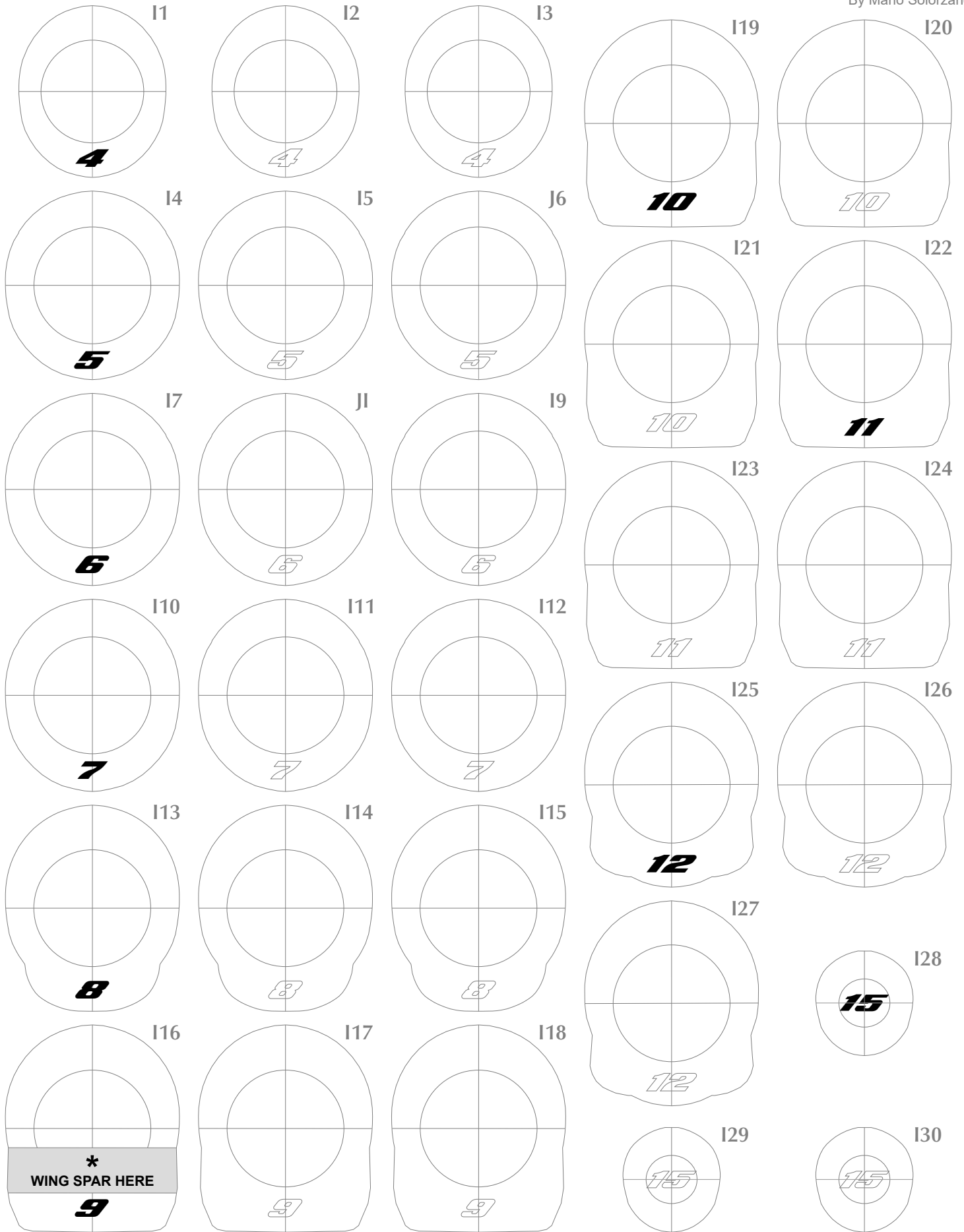
D21R

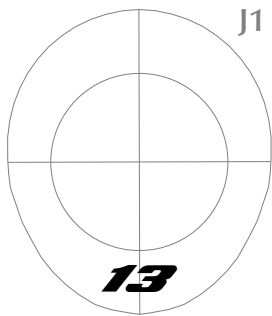




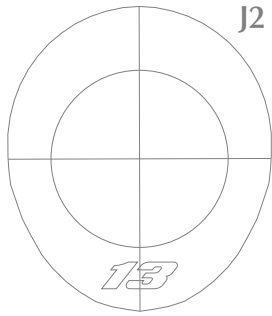




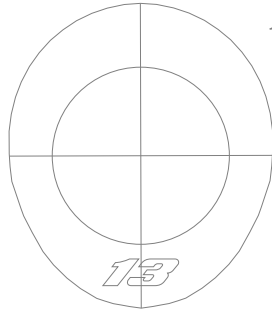




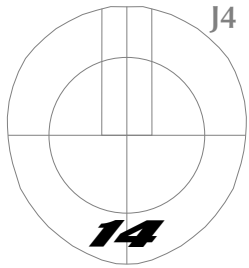
J1



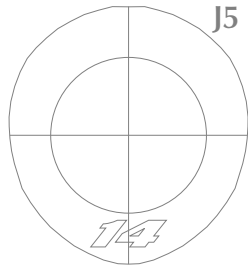
J2



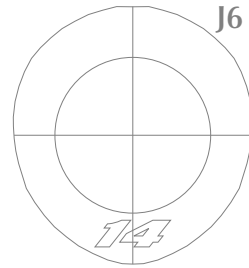
J3



J4



J5



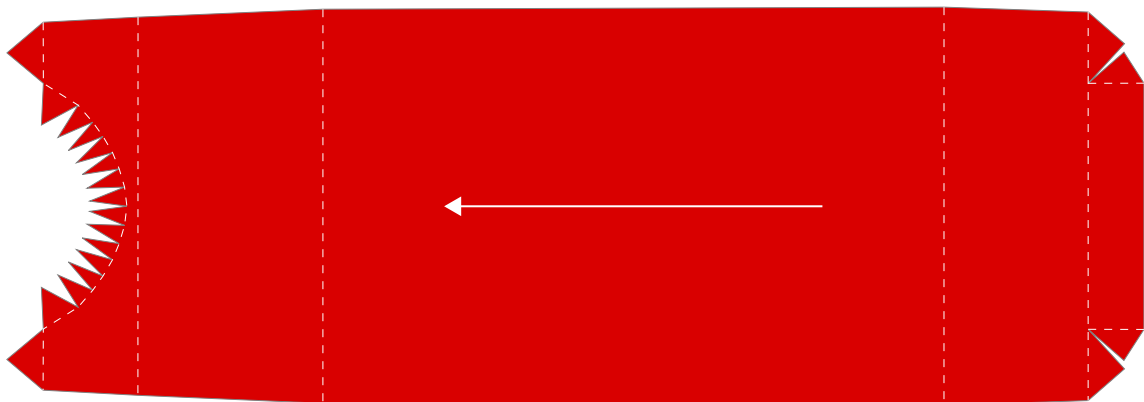
J6



J7



J8



J9

