

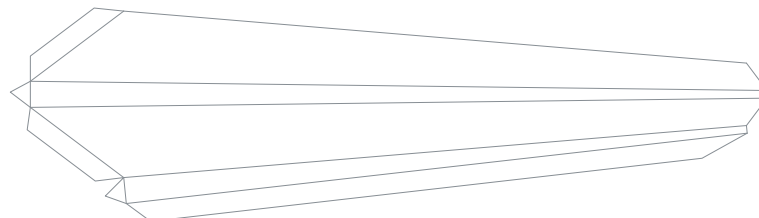
Blank space for 787-9 and 10 variants

Instructions

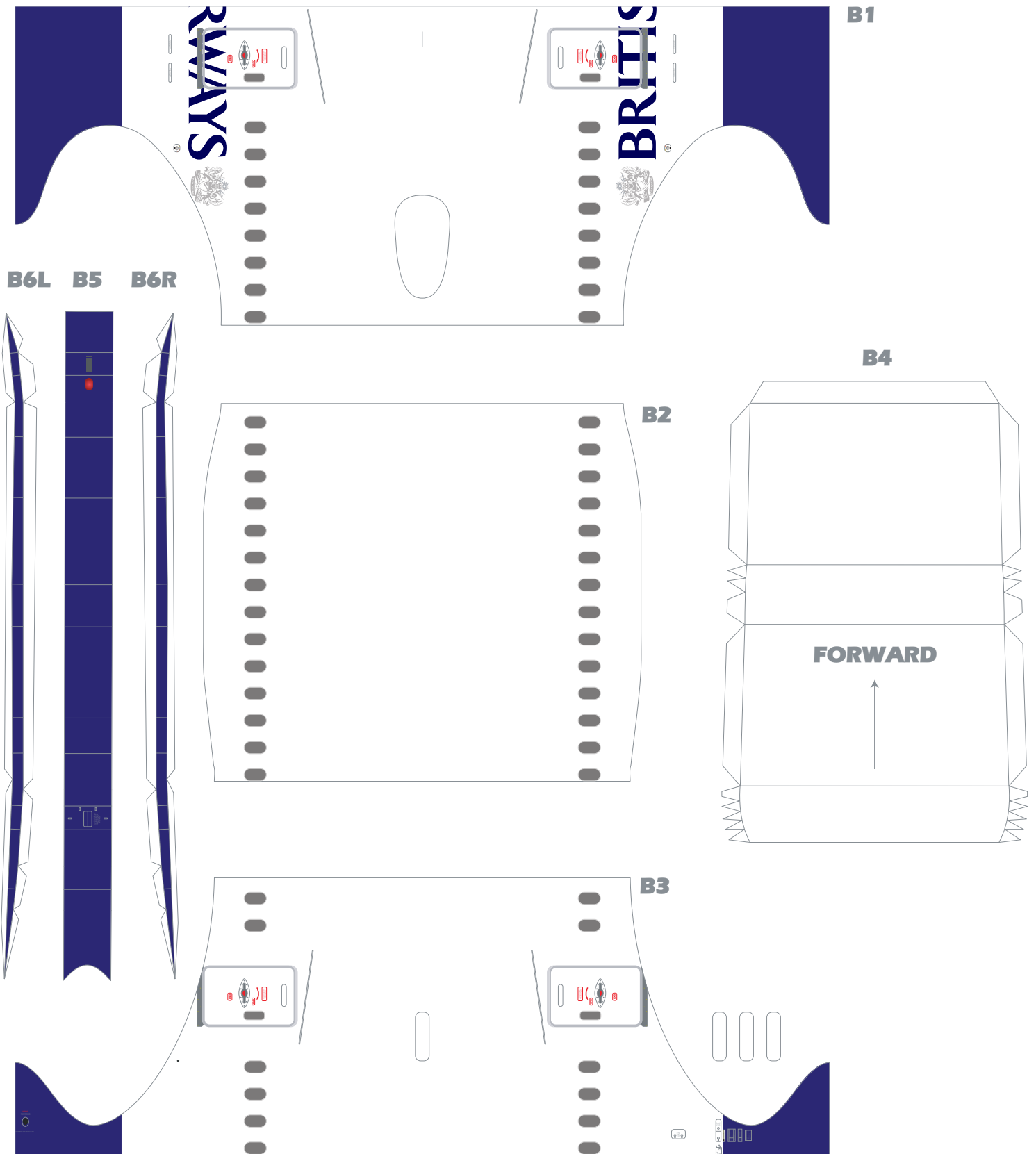


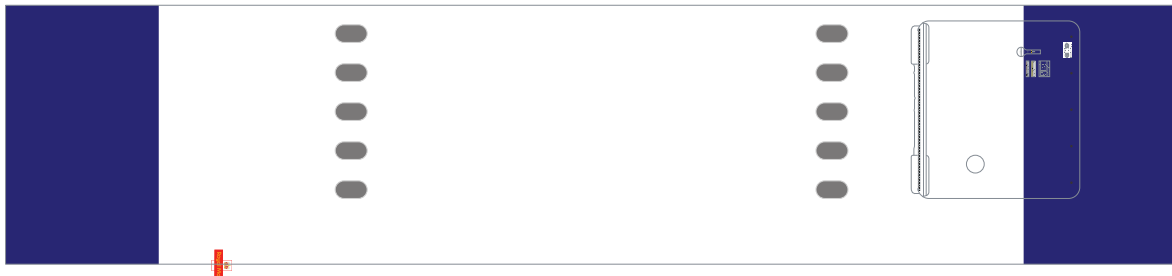
Scan

A14

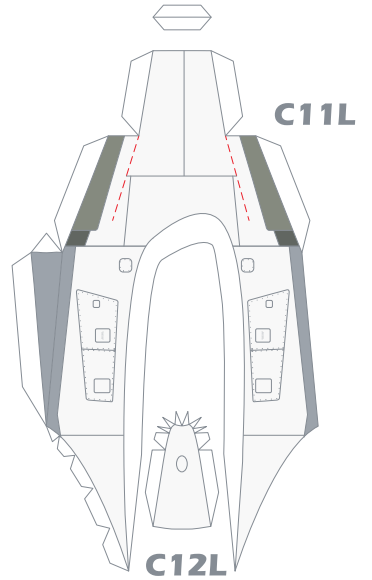


A16L





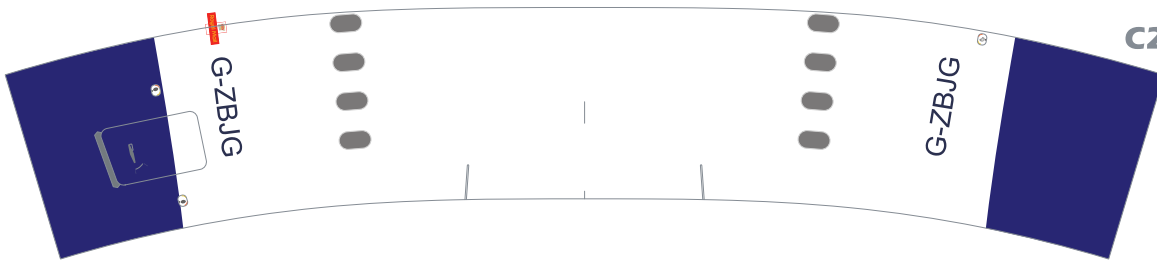
C1



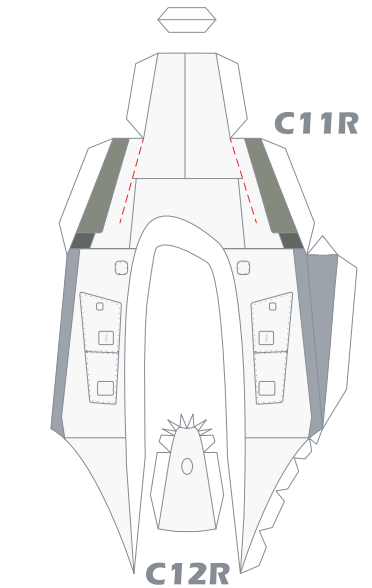
C11L

C12L

Blank space for 787-9 and 10 variants

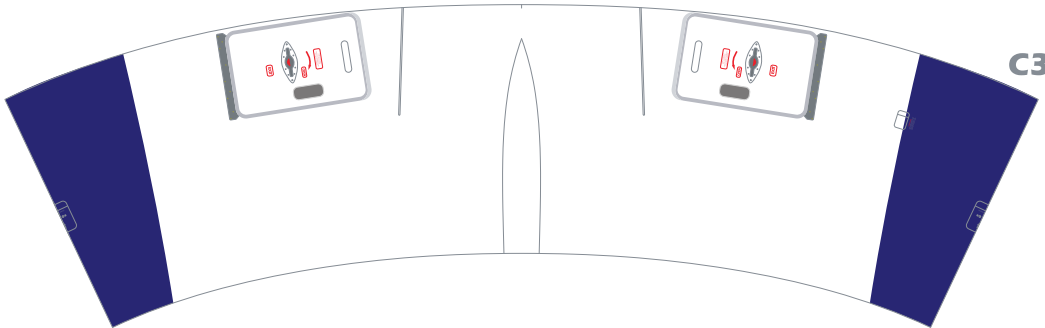


C2

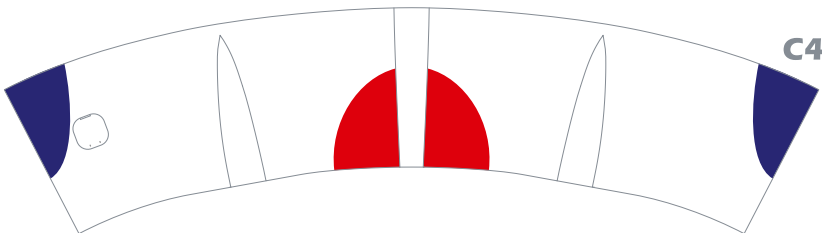


C11R

C12R

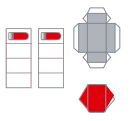


C3

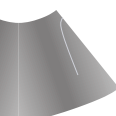


C4

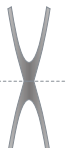
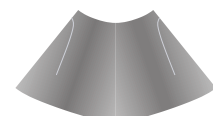
C8



C9



C7



C5



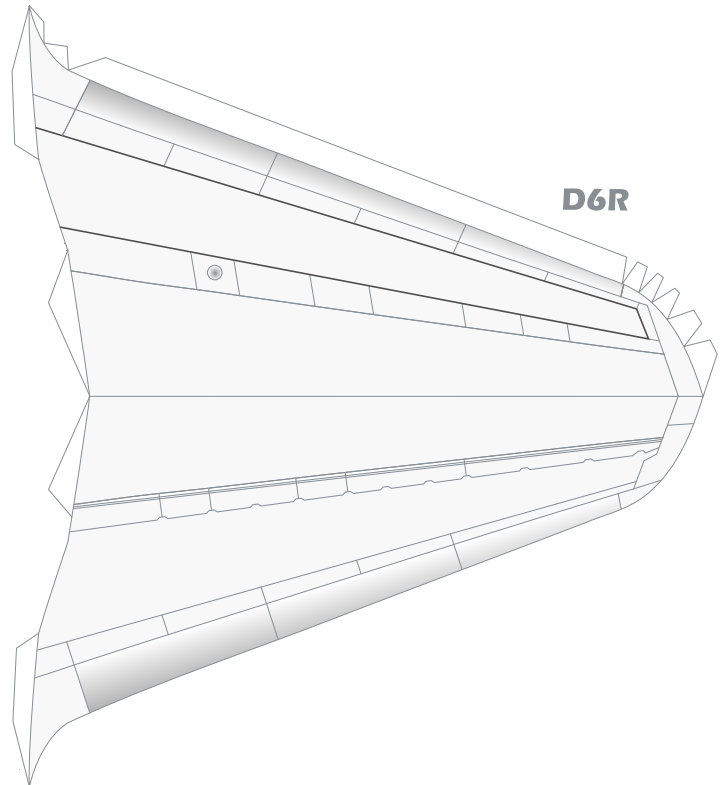
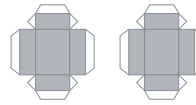
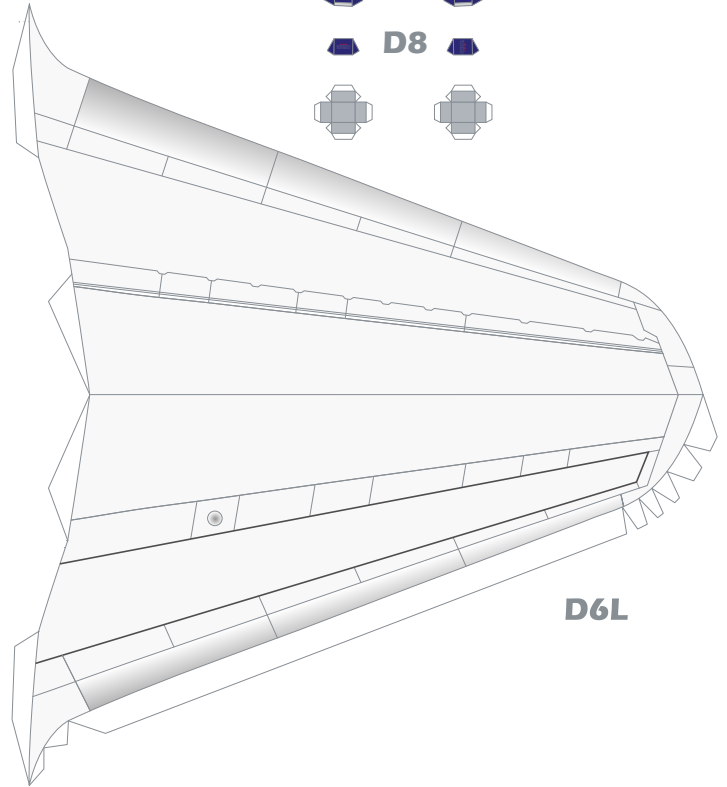
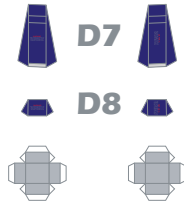
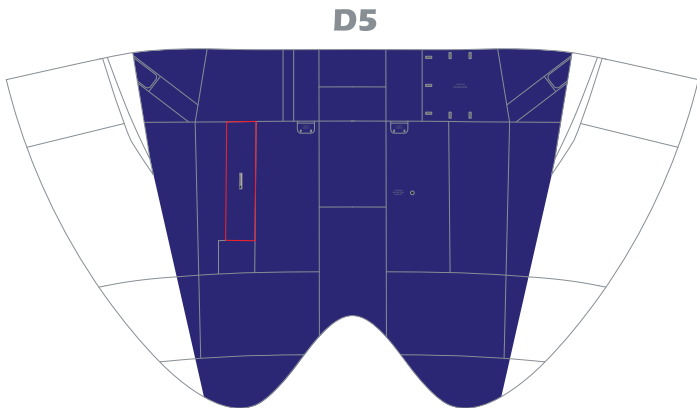
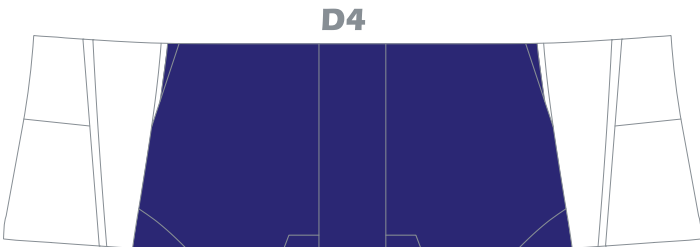
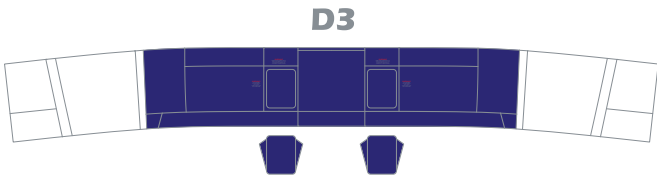
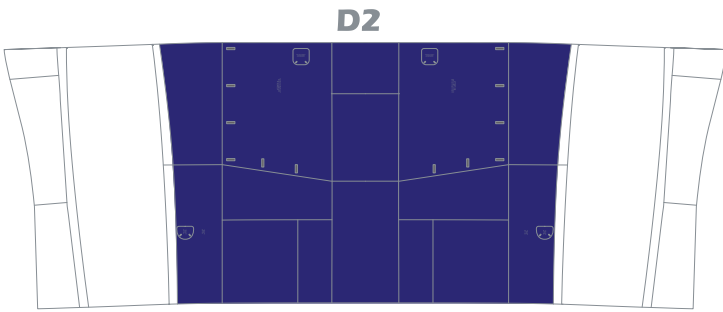
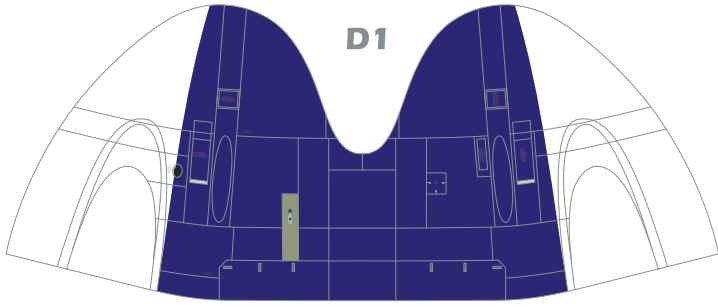
C6



C10L



C10R

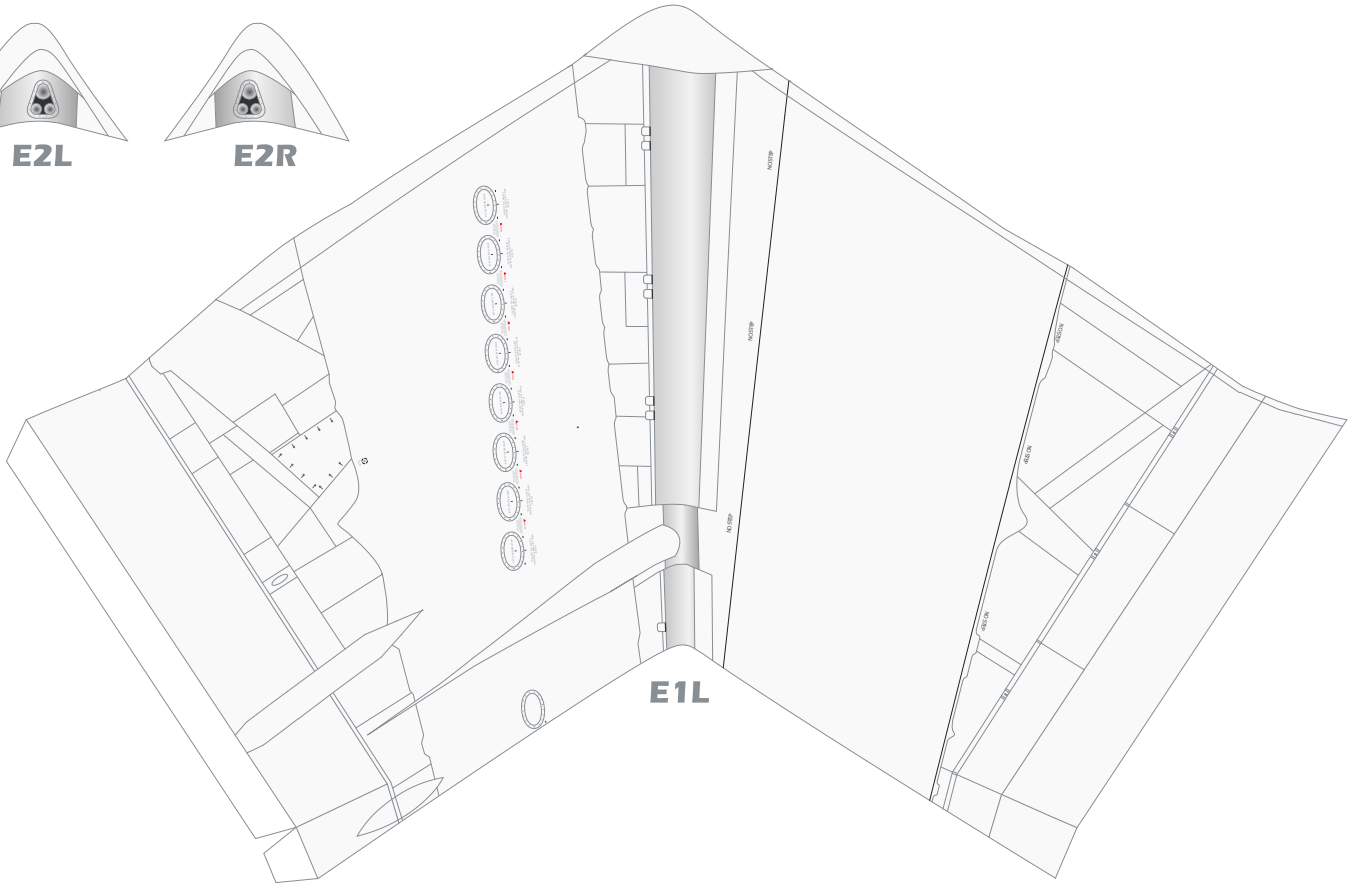




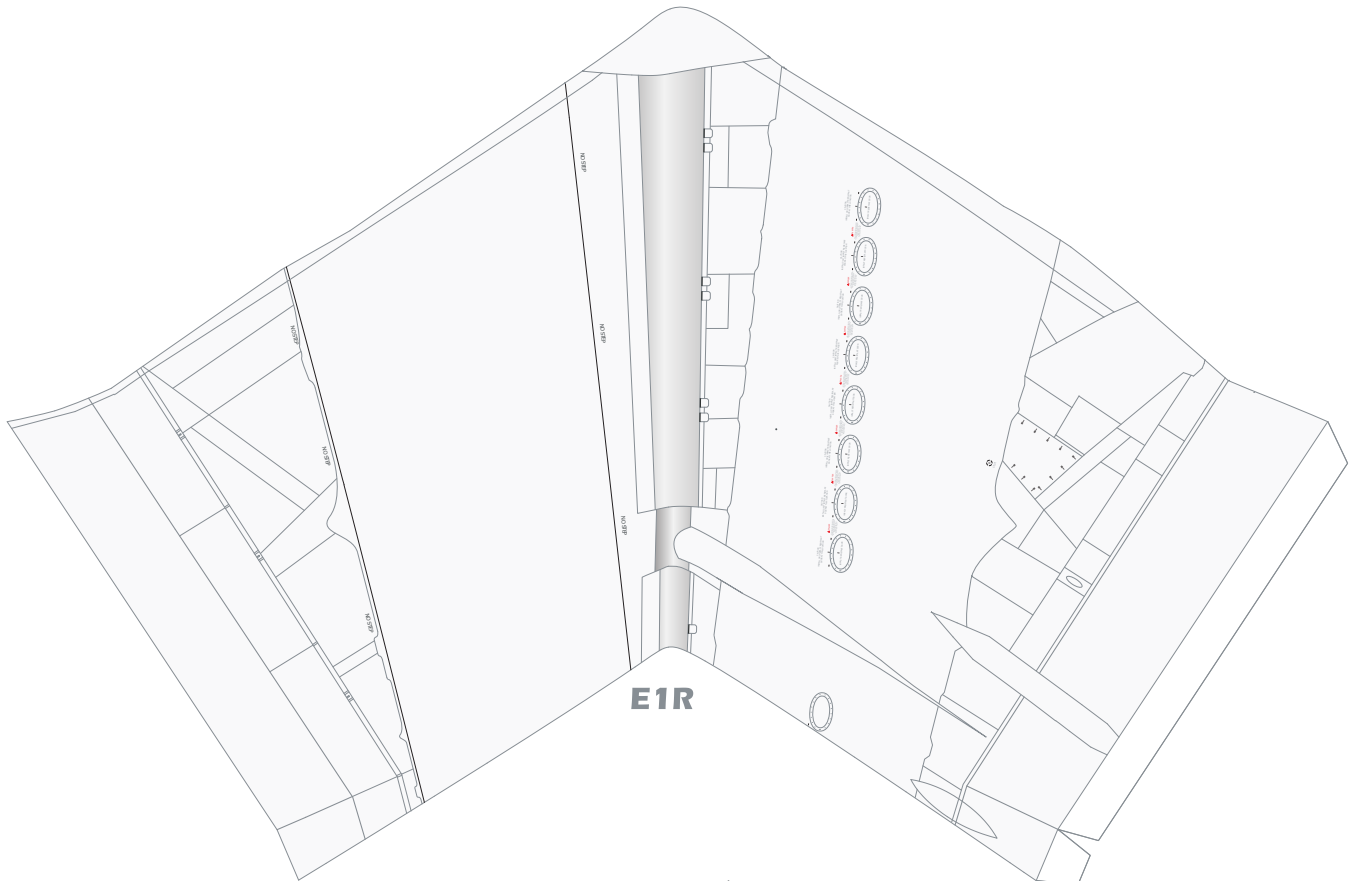
E2L



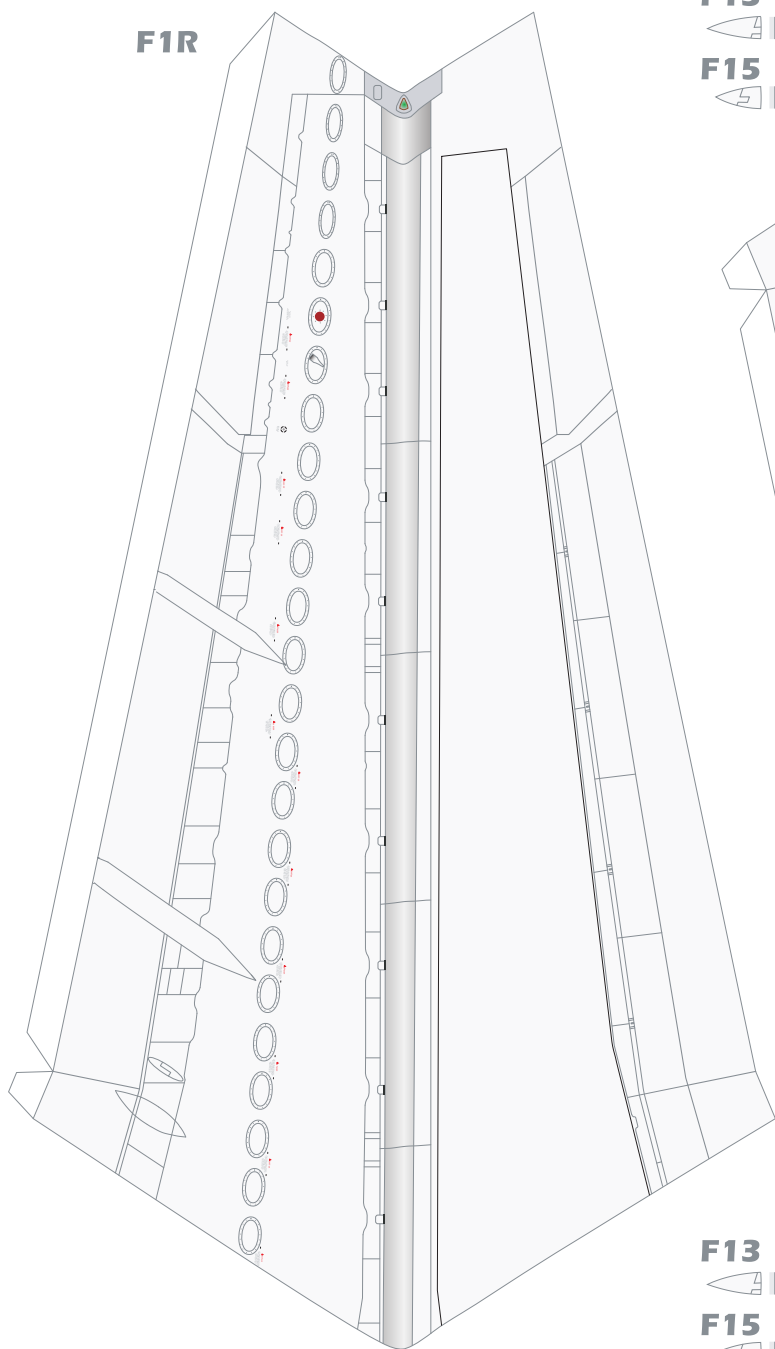
E2R



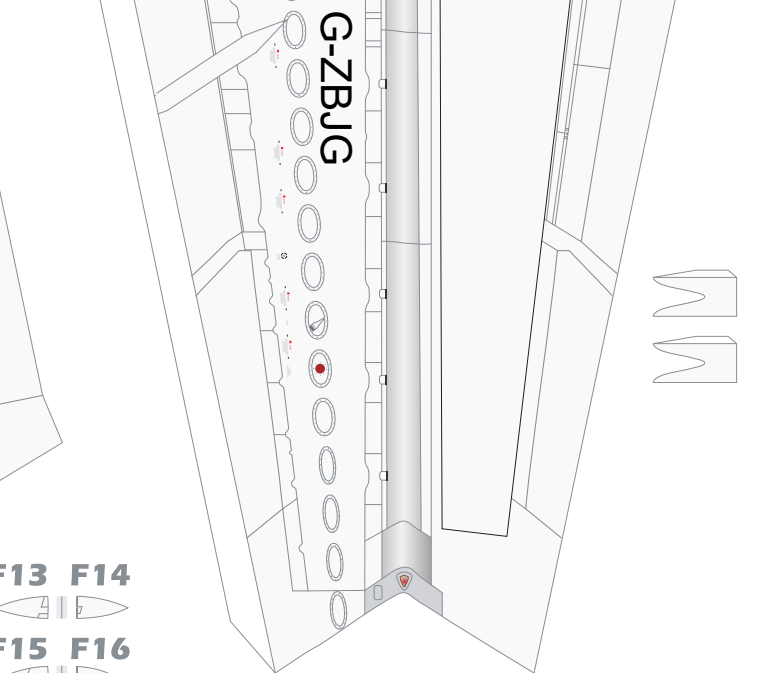
E1L



E1R



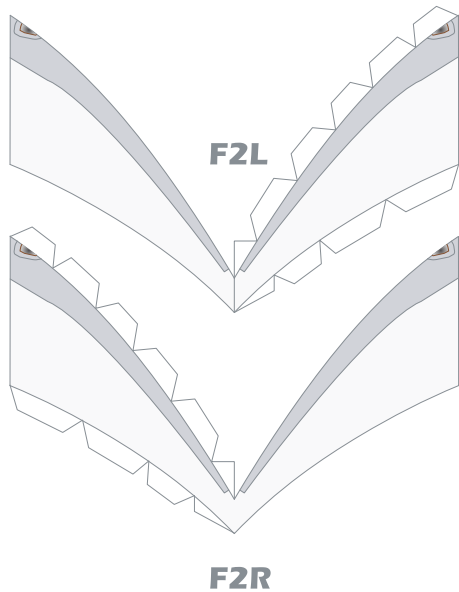
F13 F14
F15 F16



F1L

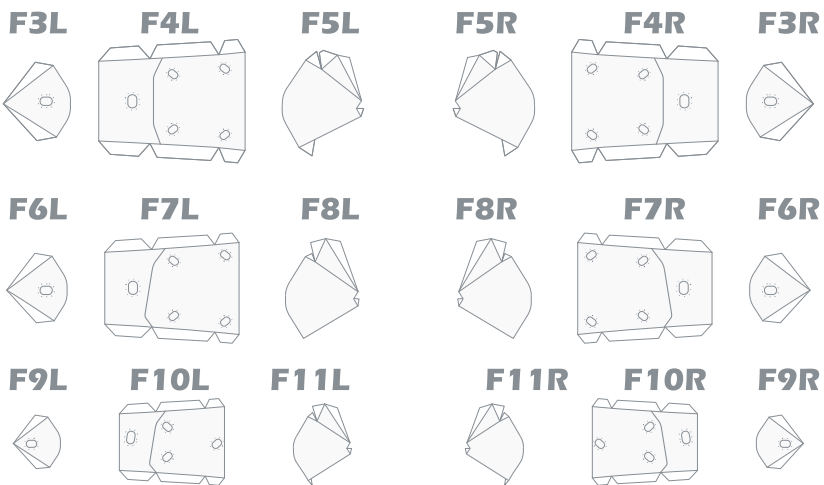
G-ZBJG

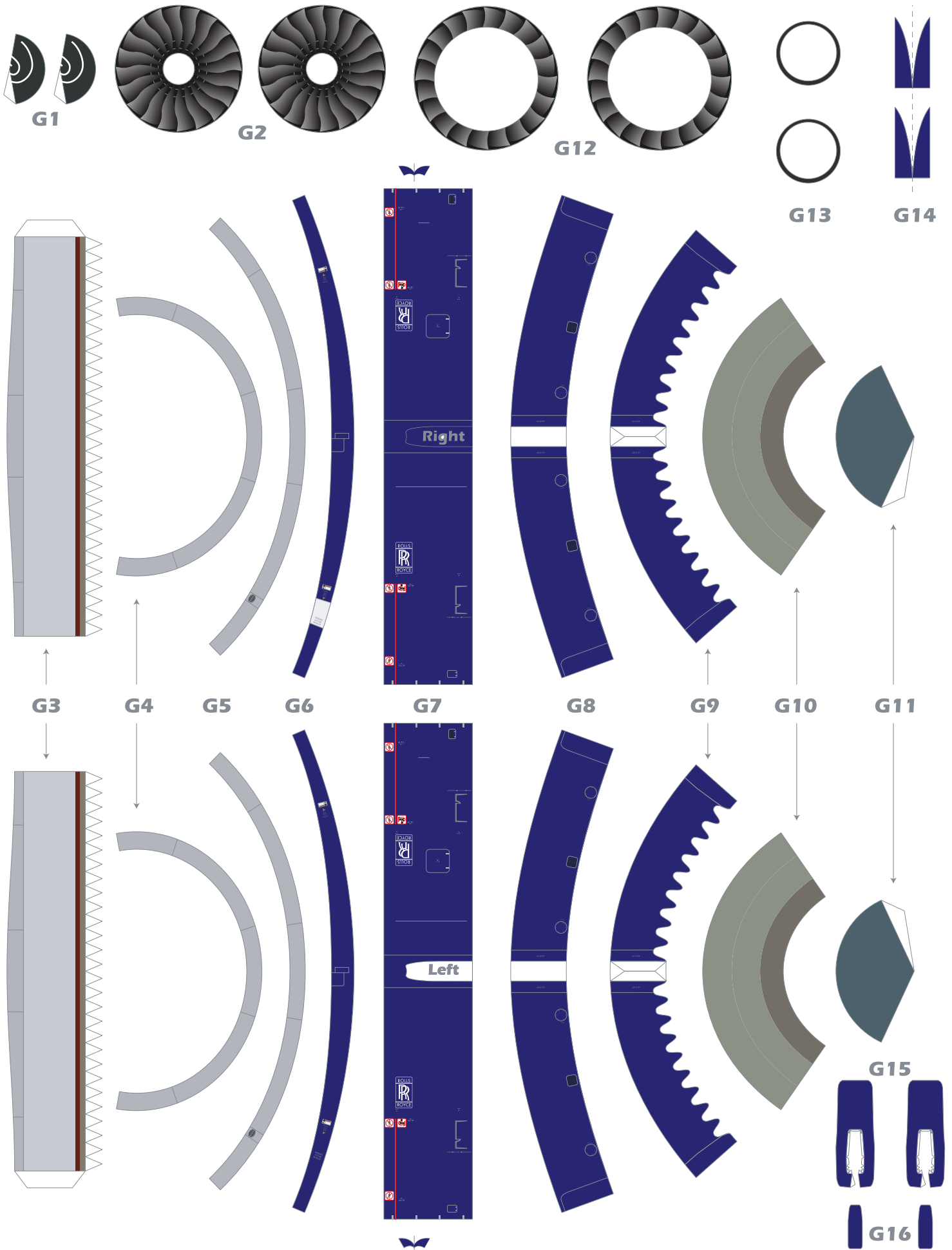
F13 F14
F15 F16

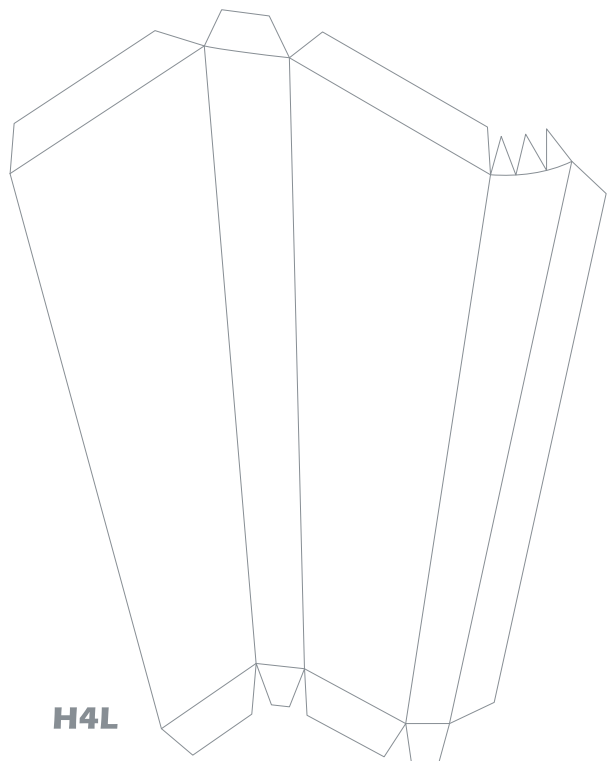
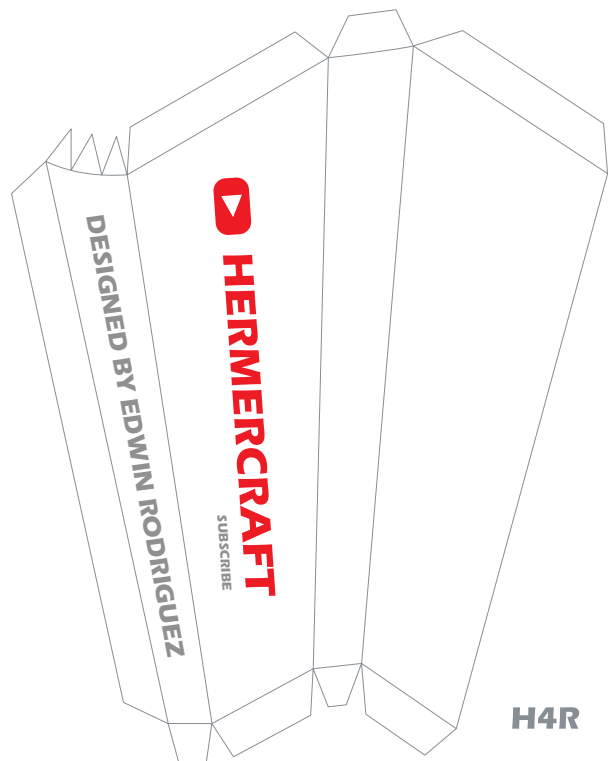
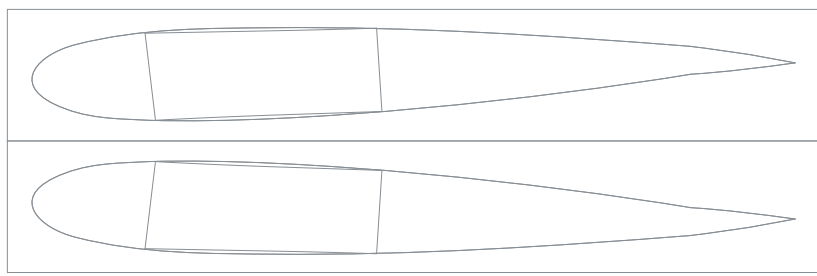
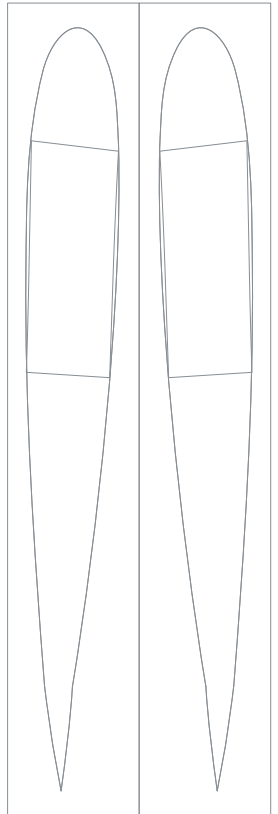
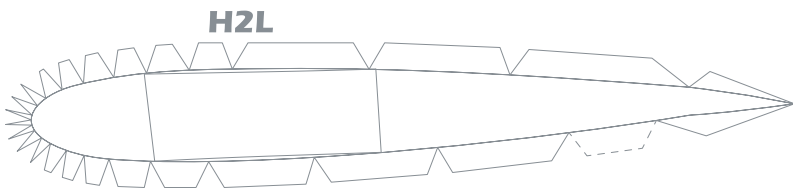
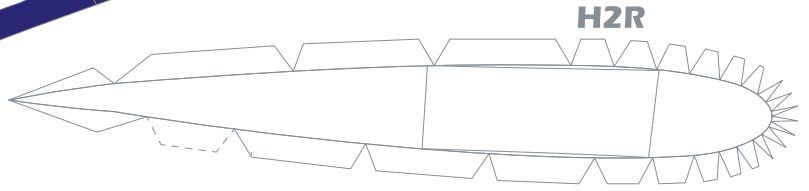
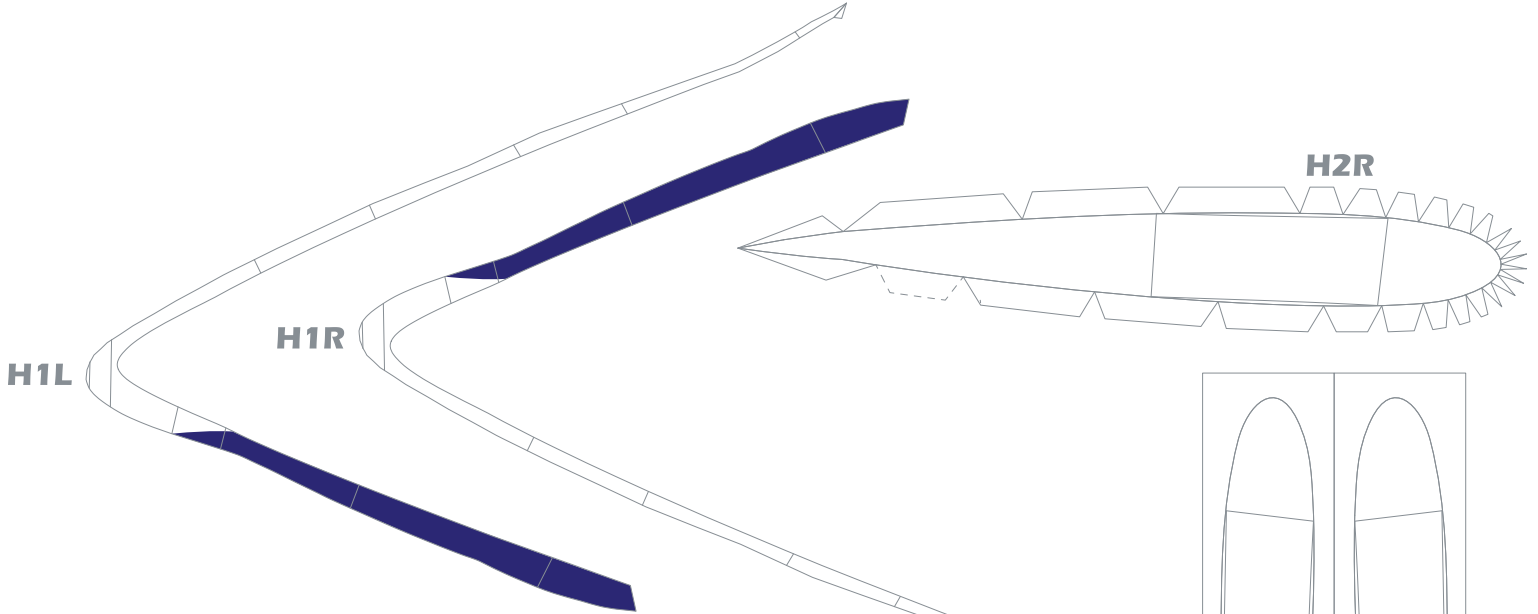


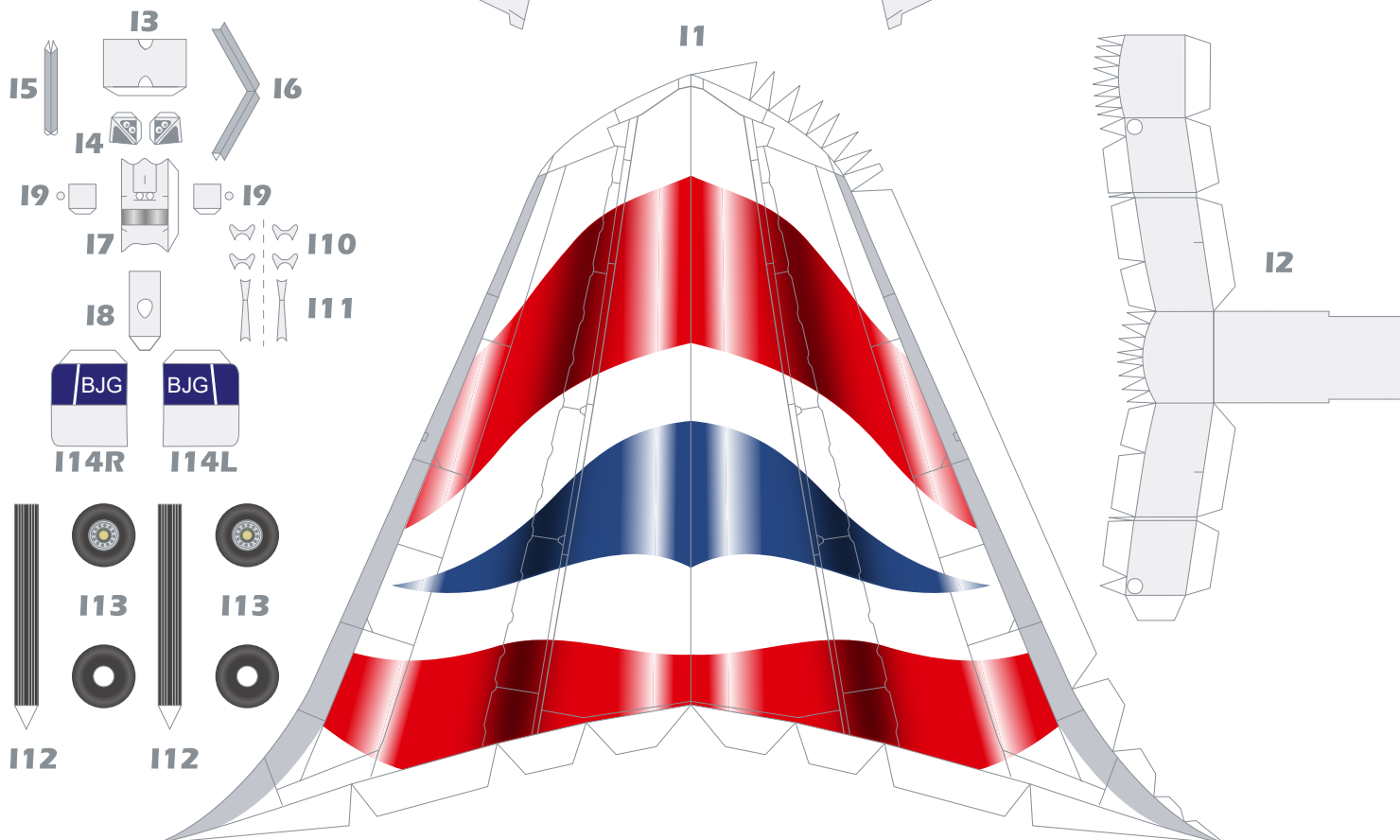
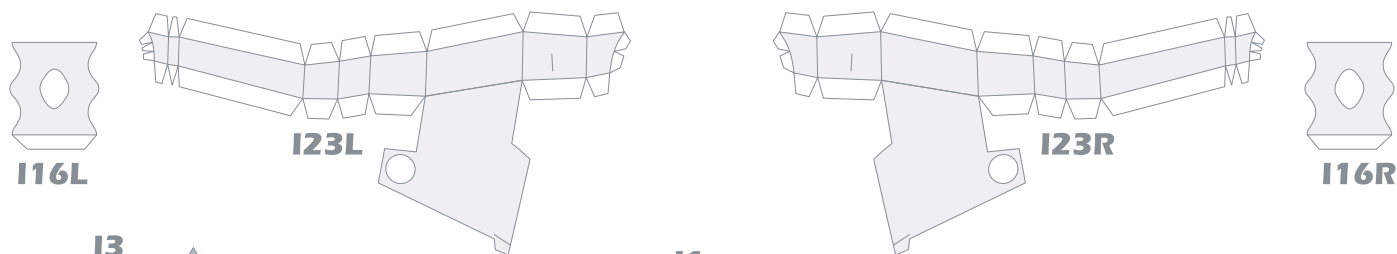
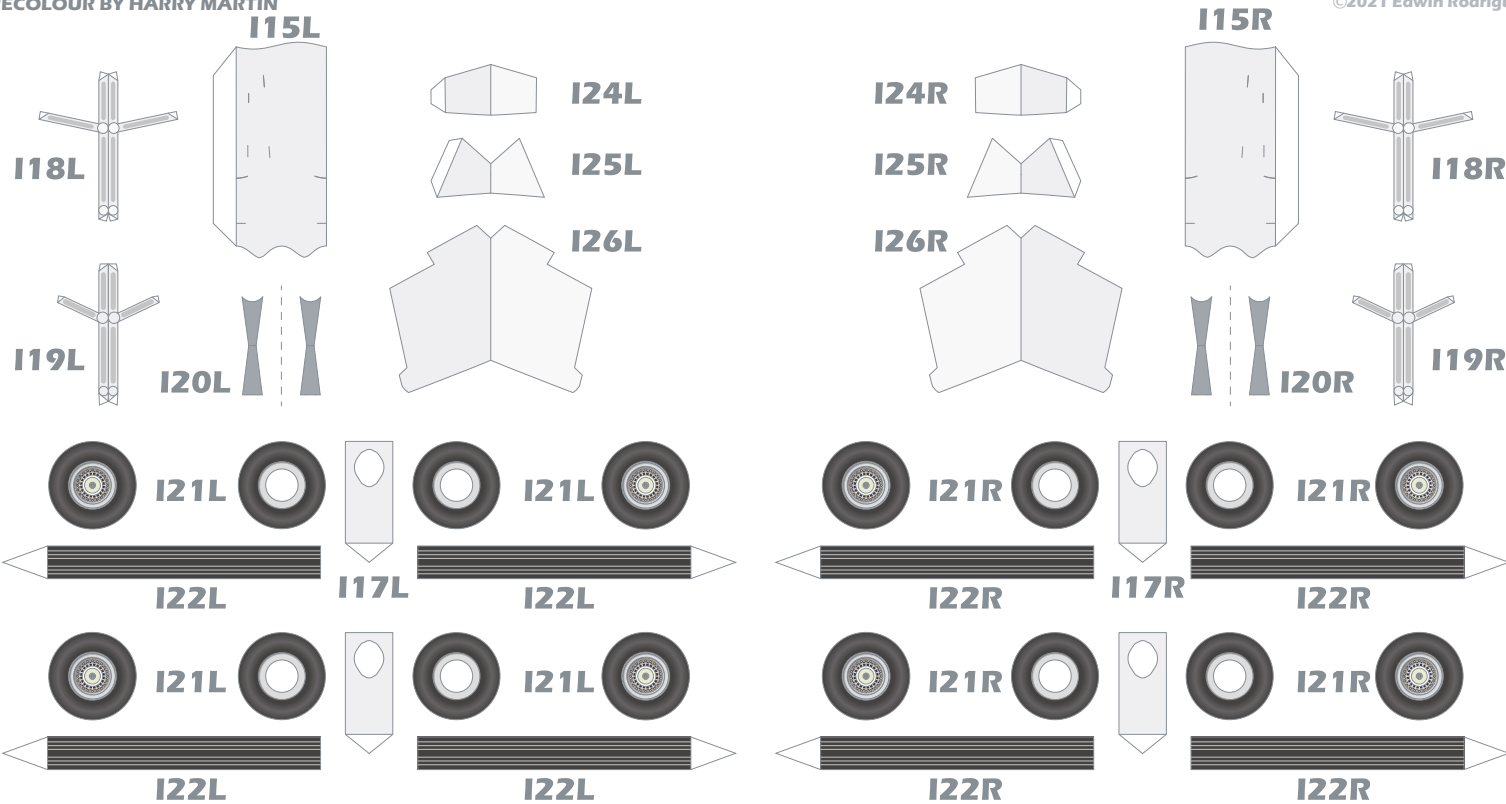
F2L

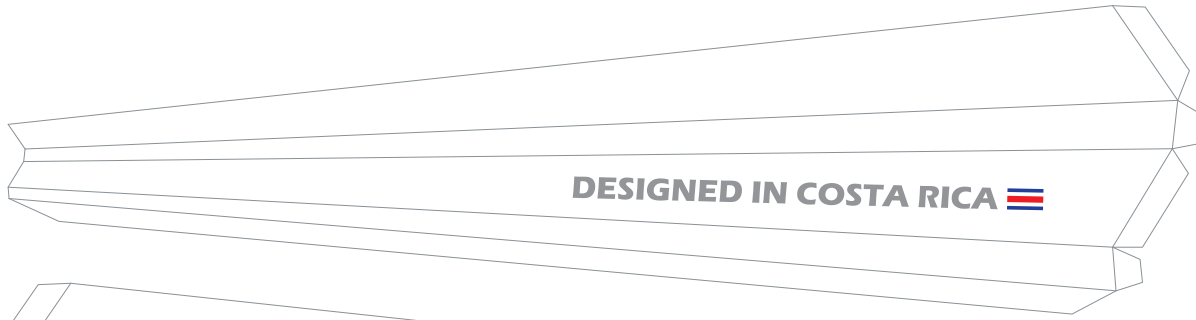
F2R











J1L



J1R

