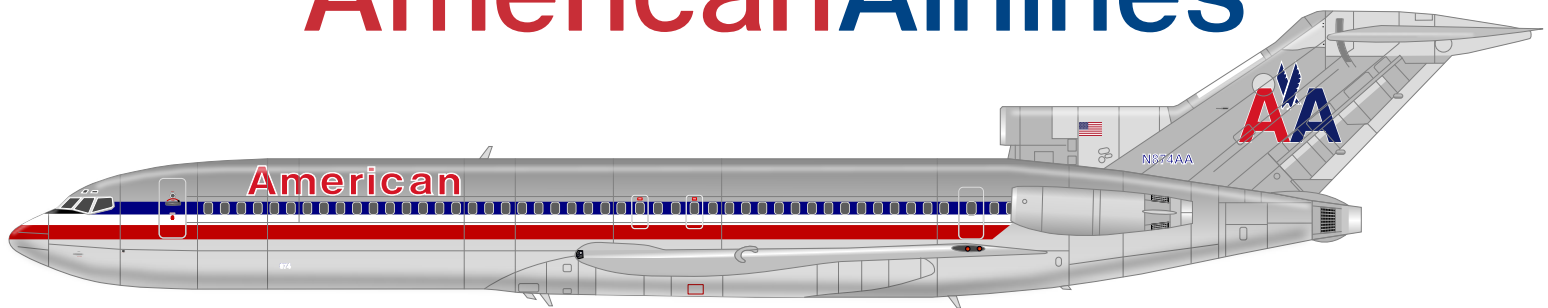


CITYCRAFT

PaperModels & More


**BOEING 727-200****American Airlines Boeing 727-223(adv) 051**

American Airlines, Inc. (AA) is a major American airline headquartered in Fort Worth, Texas, within the Dallas–Fort Worth metroplex. It is the world's largest airline when measured by fleet size, scheduled passengers carried, and revenue passenger mile. American, together with its regional partners, operates an extensive international and domestic network with almost 6,800 flights per day to nearly 350 destinations in more than 50 countries. American Airlines is a founding member of the Oneworld alliance, the third-largest airline alliance in the world. Regional service is operated by independent and subsidiary carriers under the brand name American Eagle.

The Boeing 727 is an American narrow-body airliner produced by Boeing Commercial Airplanes. After the heavy 707 quad-jet was introduced in 1958, Boeing addressed the demand for shorter flight lengths from smaller airports. On December 5, 1960, the 727 was launched with 40 orders each from United Airlines and Eastern Air Lines. The first 727-100 rolled out November 27, 1962, first flew on February 9, 1963, and entered service with Eastern on February 1, 1964.

A stretched version of the 727-100, the -200 is 20 feet (6.1 m) longer (153 feet 2 inches;46.69 m) than the -100 (133 feet 2 inches;40.59 m). A 10-ft (3-m) fuselage section ("plug") was added in front of the wings and another 10-ft fuselage section was added behind them. The wing span and height remain the same on both the -100 and -200 (108 and 34 feet (33 and 10 m), respectively)

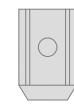
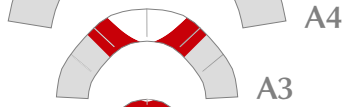
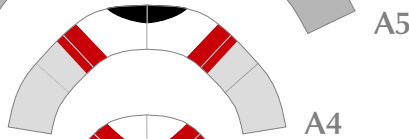
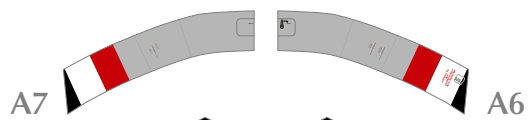
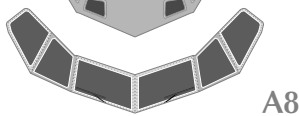
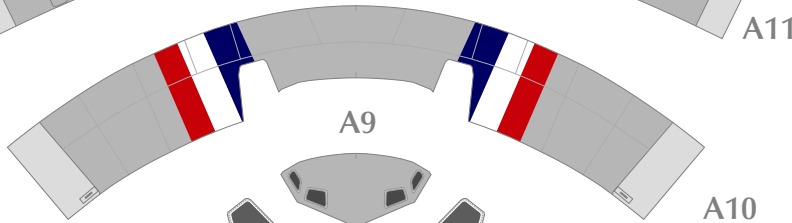
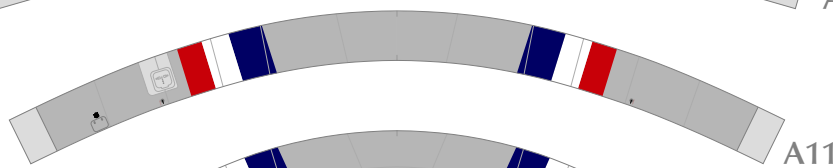
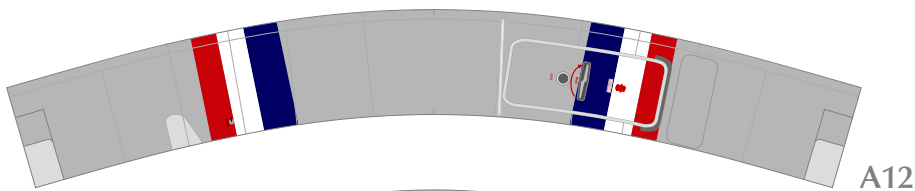
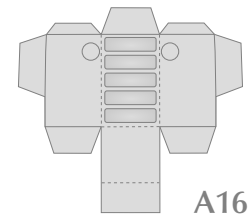
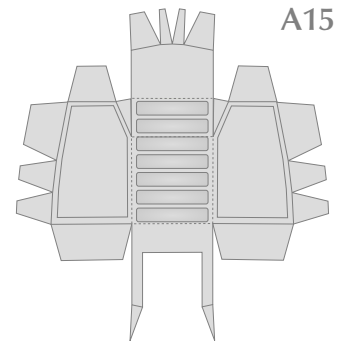


Scale: 1:100
Length: (467mm)
Width: (329mm)
Part 272 (13 pages)

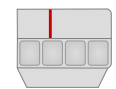
Attach the parts in order.
A1 - K6
You can choose to make either a grouded style (With Wheels)
or an in-flight style (without wheels) aircraft.

- *This model is designed for papercraft and is different in several ways from the real plane
- *Build the model by carefully reading the Assembly Instructions.
- *The final size of the model may vary slightly depending on the configuration of your printer



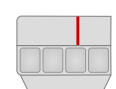


A28



A17L

A28



A17R



B13



B14



B15



B16



B17



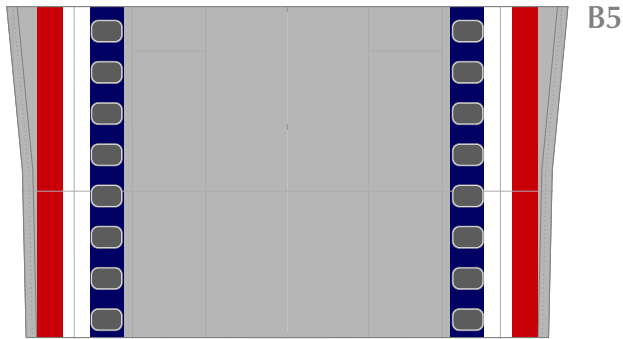
B18



B19



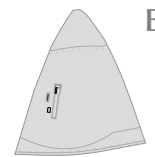
B20



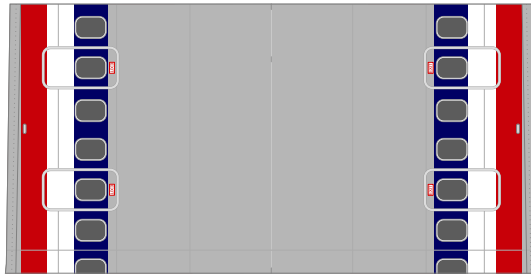
B5



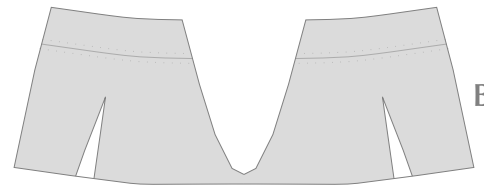
B11



B12



B4



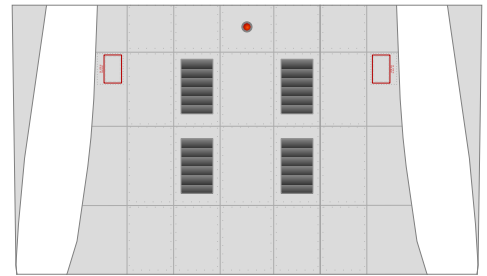
B10



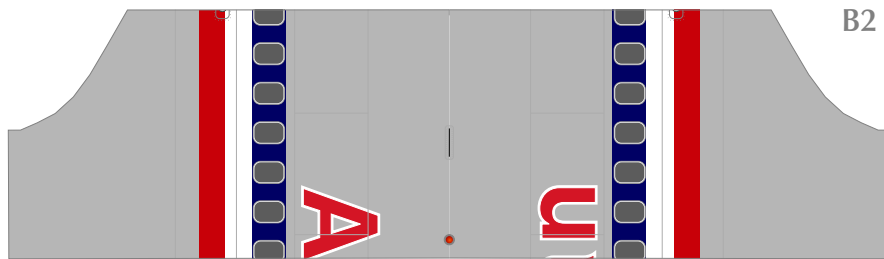
B9



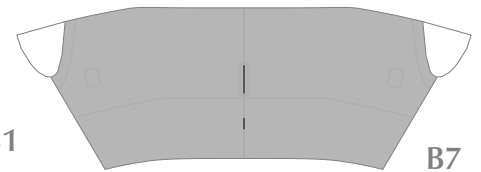
B3



B8



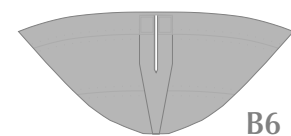
B2



B7



B1



B6

